

Texas Truffles

Size: 78" x 78"

This elegant and dramatic Texas Lonestar Quilt features a fabric line by Moda's 3 Sisters entitled "Chocolat." Hence the name. But, of course, you can see this quilt would be striking in any color story. Pick your favorite and indulge.

QUILTERS BASICS:

- Read instructions before beginning a project.
- All instructions include 1/4" seam allowance.
- Label each group of cut pieces.

CUTTING:

Star and Pieced Border Cutting Chart

Cut all strips 2" x width of fabric

Fabric Number													
1	2	3	4	5	6	7	8	9	10	11	12	13	14
2	2	6	6	5	6	7	8	9	8	7	6	5	4
Number of strips													

- From Brown tone-on-tone #8, cut:
- 2 strips, 22" x wof
 - Subcut: 4 squares approximately 22" x 22" for appliqué
 - 1 square, 28 1/8" x 28 1/8"
 - Subcut: twice diagonally for side setting triangles
 - 8 strips, 2" x wof for border 1
 - 9 strips, 3 1/2" x wof for border 3
 - 9 strips, 2 1/4" x wof for binding

CONSTRUCTION:

Appliqué Corner Squares

Choose your favorite method of appliqué. The templates do not include seam allowances.

1. Prepare the 22" fabric #8 squares for appliqué.
2. Use templates provided to cut the shapes with colors and quantities indicated.
3. Finish appliqué squares before assembling quilt top.
4. When appliqué is complete, trim squares with appliqué centered to measure 19 1/2" x 19 1/2".

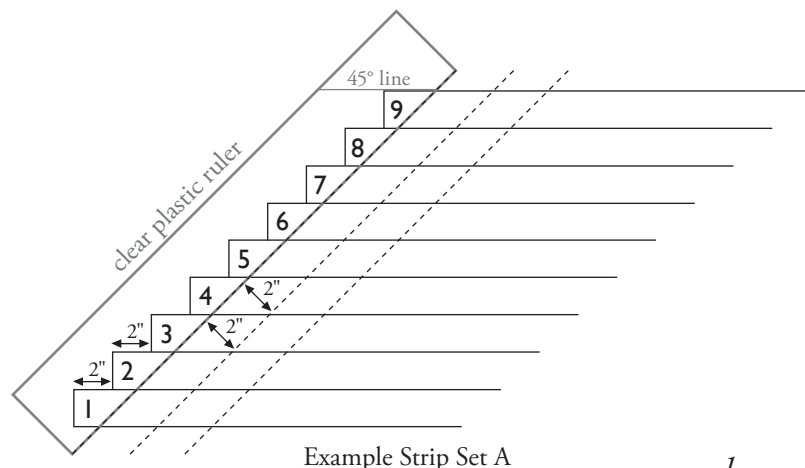
Lone Star Strip Sets

1. Make 1 each of 9 strip sets, A through I, sew the 9 fabric strips in the following fabric number sequence.

Strip Set	Fabric Numbers
A	1,2,3,4,5,6,7,8,9
B	2,3,4,5,6,7,8,9,10
C	3,4,5,6,7,8,9,10,11
D	4,5,6,7,8,9,10,11,12
E	5,6,7,8,9,10,11,12,13
F	6,7,8,9,10,11,12,13,14
G	7,8,9,10,11,12,13,14,3
H	8,9,10,11,12,13,14,3,4
I	9,10,11,12,13,14,3,4,1

When piecing strip sets, it is important to offset each consecutive strip 2" from the beginning of the previous strip. See illustration. Press seams open.

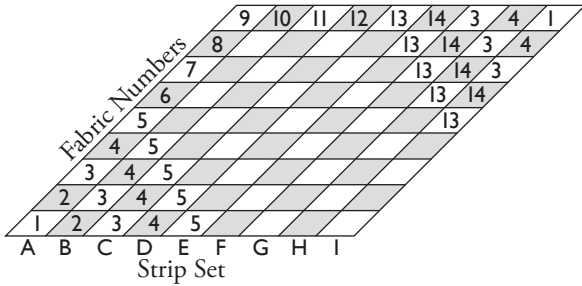
2. Using the 45° angle line on a 24" x 6" clear plastic ruler, carefully cut each strip set into 10 segments of 2" wide at a 45° angle. 8 segments will be used in the Lonestar and 2 segments for border 2# (set these aside). Handle each segment delicately since the edges of each star point strip are now on the bias and will stretch easily. Label each set of segments, A through I.



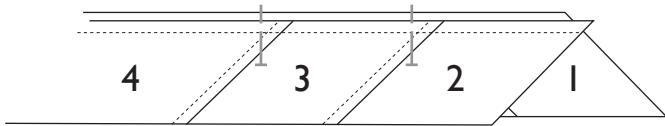
Example Strip Set A

Assemble Star Point Units

Each of the 8 star point units are made up of 1 segment from each lettered strip set, A through I. It is very important to pin seam intersections as you prepare to sew.



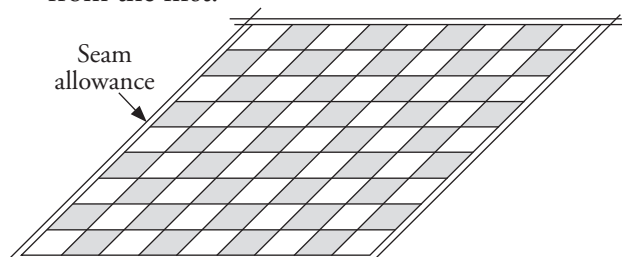
1. Place one strip set segment A, right side up, on work table with fabric #1 on the right hand end. Place strip set segment B, wrong side up, with fabric #2 on the right hand end. Place segment B over A with first seam lines intersecting (at right hand end). Insert a pin in segment B, $\frac{1}{4}$ " from the raw edge exactly on the first seam line. Position the tip of pin $\frac{1}{4}$ " from raw edge exactly on the first seam line of segment A. Secure the pin within the seam line as the raw edges of the segments meet and match. Repeat this pinning method on each of the 8 seam intersections. Sew segments together. Add each of the remaining segments in the same manner to complete this star point unit. Press all joining seams open.



Make a Blocking Cloth (Optional)

Use $\frac{1}{2}$ yard of 100% cotton muslin. Make an exact drawing of one completed star point with seam allowance.

- a. Draw a straight, 24" base line, 2" above and across the lower edge of the muslin piece. Draw a line from the left end of the base line up 21" at a 45° angle to the base line. Measure 2" to the right of the first angled line and draw a second parallel line. Repeat this until you have drawn 9 lines from the first.

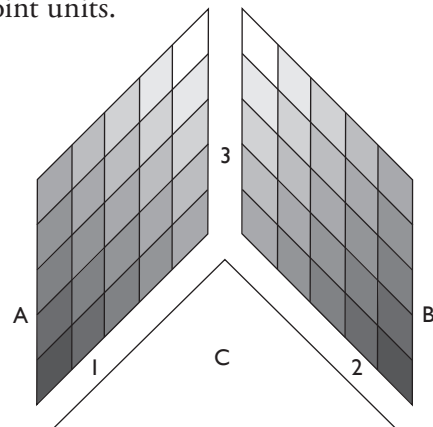


- b. Beginning from the bottom base line, measure 2" up and draw a second parallel line. Repeat this until you have drawn 9 lines from the base line.
- c. Draw a line $\frac{1}{4}$ " outside the entire drawn shape. This is the seam allowance.
- d. Place the Blocking Cloth on the ironing board surface. Place the star point with wrong side up and align all edges with the final drawn shape including seam line. Pin edge of star point unit to drawn lines around entire star point. Press to block.

2. Repeat until all 8 units are complete.

Assemble Star Point Units With Corner Squares and Setting Triangles

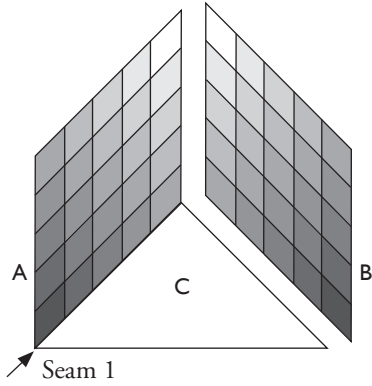
1. Mark the tips and corners of all units with $\frac{1}{4}$ " seam. Make a very visible dot at the angled corners where seam lines intersect. When sewing interior seams of star points, begin and end at the marked dots.
2. Make 2 stacks of 4 star point units positioned in order to sew pairs together. Be sure that the two stacks mirror each other in color placement – center star diamonds will touch each other.
3. Place the setting triangles in the space between the two stacks with the right angle at the base of the two star point units.



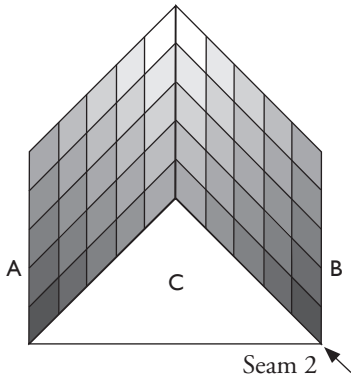
Layout for Y-seam construction with sewing order

4. Turn the first triangle over star point unit A with right sides together. Align seam lines and $\frac{1}{4}$ " marks at the tips and corners.

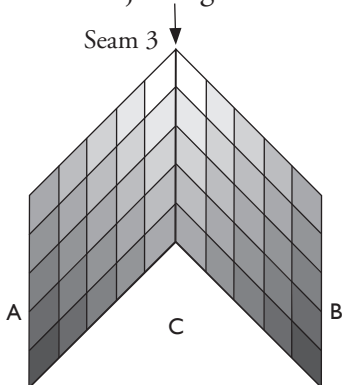
- Sew the seam, beginning and ending interior seams at the $\frac{1}{4}$ " mark on tips and corner of star point. Begin and end with a backstitch. Finger-press the seam away from the star point unit. Repeat for all 4 units.



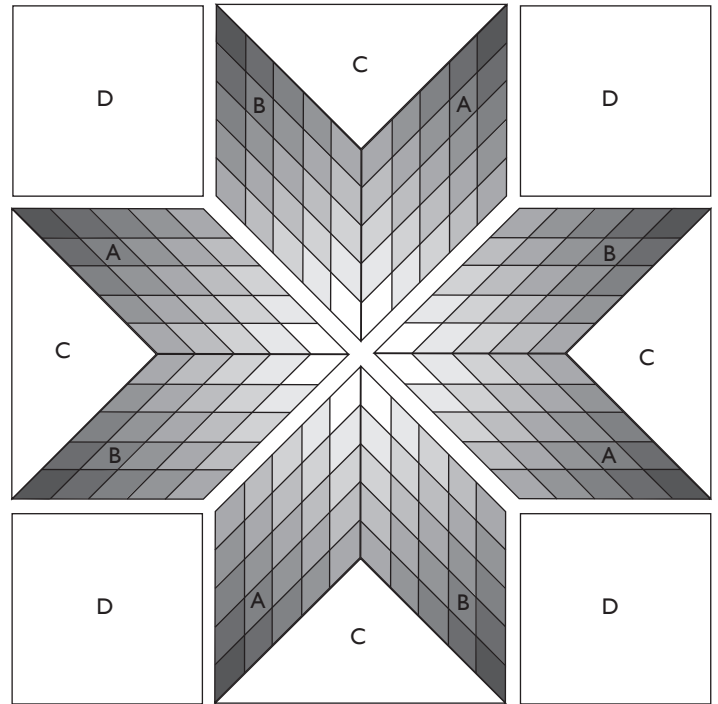
- Place this stack of sewn units back in place beside the star point unit B with triangle between the two point units.
- Repeat steps 4 and 5 to join the free triangle side to the star point unit B. Finger-press the seam away from the star point unit.



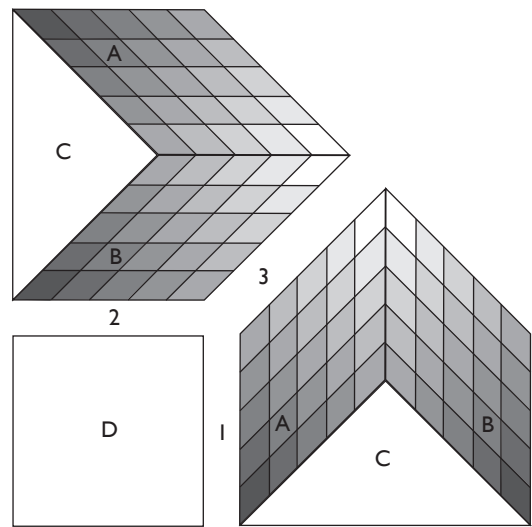
- Fold each of the above sewn star point/triangle units with right sides together and raw edges aligned. Sew from the star point tip toward the setting triangle, beginning and ending with a backstitch and stopping just short of the previous seam. Repeat this for each sewn pair. Press the joining seam toward B.



- Arrange sewn units in a star as they will appear when complete. Place corner squares within the arrangement. Following the same basic method as sewing setting triangles in place, turn a corner square over onto the A unit side of the sewn unit with right sides together. Sew the seam, beginning and ending with a backstitch. Finger-press the seam away from the star point unit.

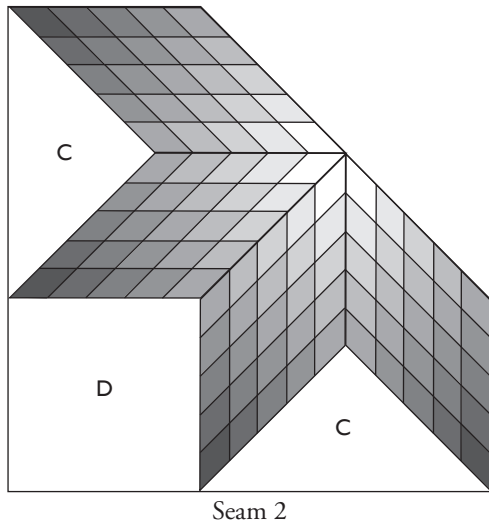


Four star point units with Y-seams

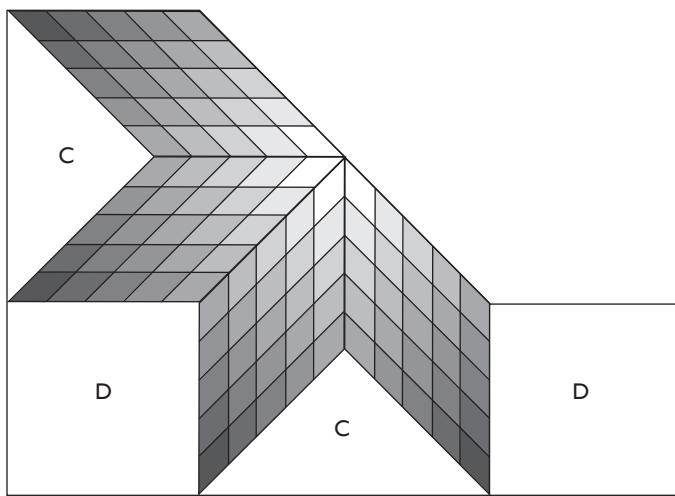


Order for sewing seams

10. Sew the next side of the corner square to the B unit side of the sewn pairs
11. Fold this unit in half with right sides together and raw edges matching. Sew seam from the star point tip to the corner of the square, beginning and ending with a backstitch and stopping just short of the previous seam. Repeat this for the opposite corner of the star.

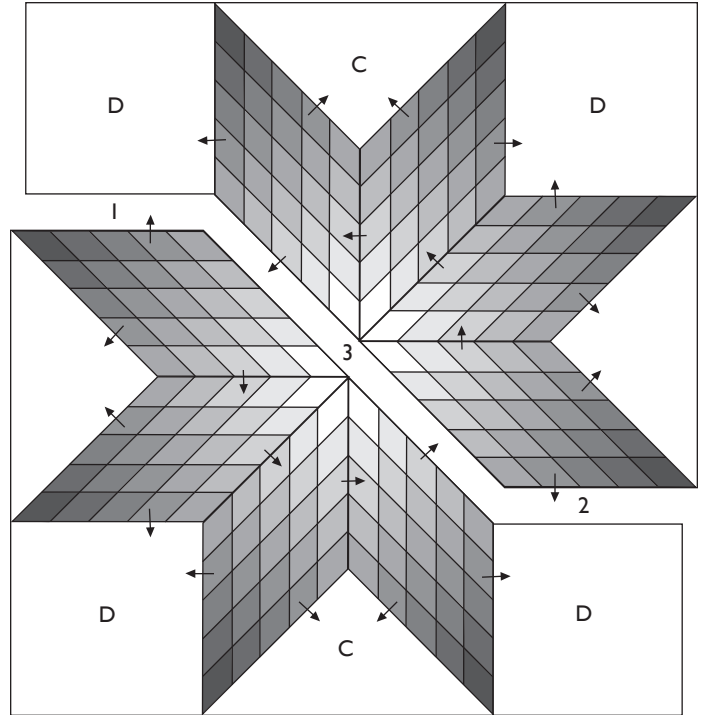


12. Place the sewn units and the remaining two corner squares as they will appear when star is complete. Sew each square to the star unit side in a counter clockwise direction. Finger press the seam away from the star point.



Adding the setting square

13. Place the two star halves with right sides together and sew as shown. Before sewing the final center seam, align the center seam intersections. Baste 4-6 stitches at the center intersection. Check for good alignment. Sew the seam with regular stitches.



Joining two halves at the center
Press seams in the direction of the arrows

Borders

Border #1

1. For side borders, determine the vertical measurement from top to bottom in the center of the quilt top. Piece, with straight seams, and cut 2 side borders to this measurement. Sew to the quilt.
2. For top and bottom borders, determine the horizontal measurement from side to side across the center of the quilt top. Piece, with straight seams and cut these 2 borders to this measurement. Sew to the quilt.

Pieced Border #2

1. Collect segments set aside from the previously cut strip sets specifically for Border #2. Sew segment together end to end.

- Using the method of determining the border measurements for Border #1, cut the border strips and sew to the quilt, sides first then top and bottom.

Border #3

Use the same method as for Border #1 and add final border #3 to the quilt, sides first then top and bottom.

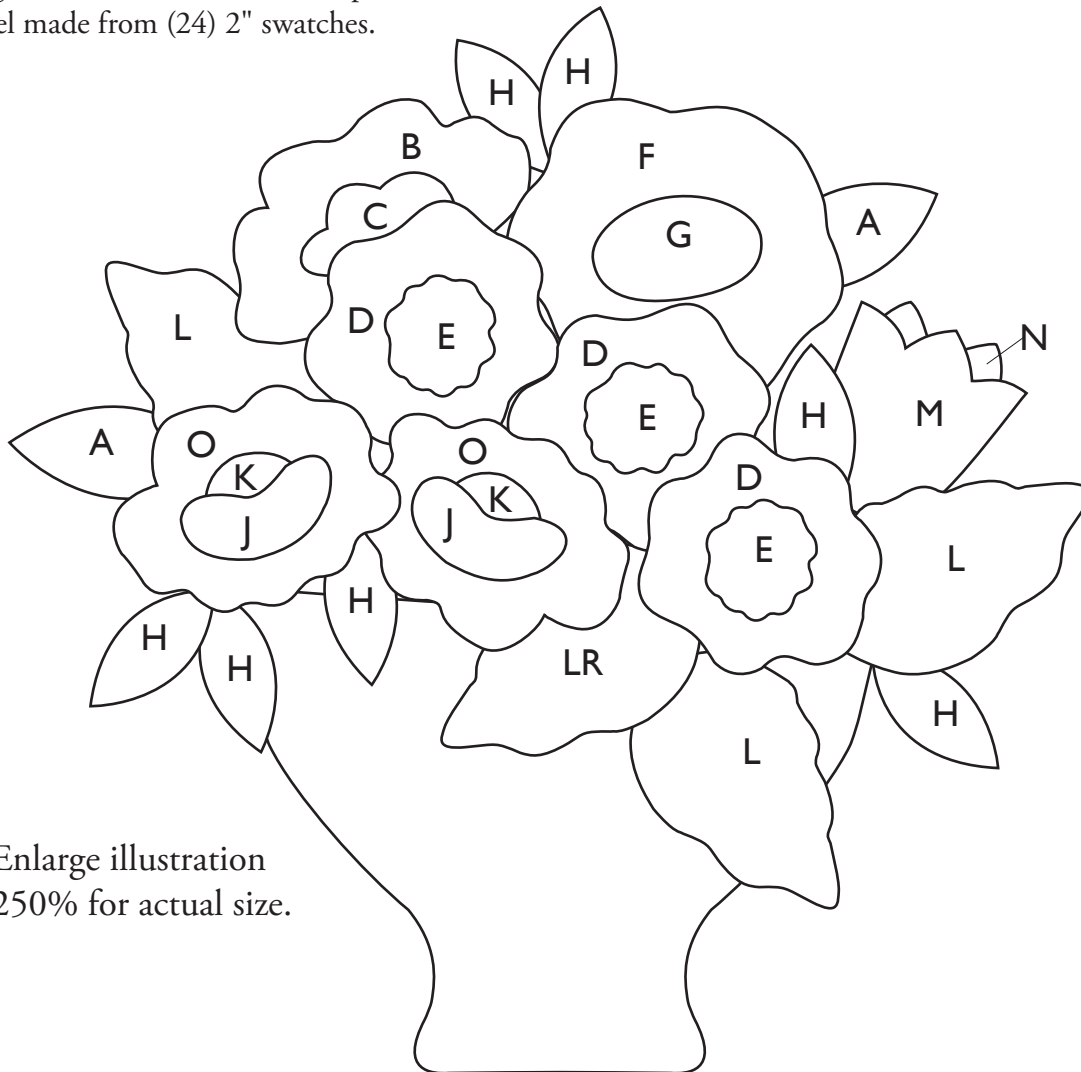
Finishing

- Prepare the binding. Sew binding strips together, end to end. Press binding strips in half lengthwise with wrong sides together.
- To quilt, layer and baste the quilt top, batting and backing. Quilt by machine or by hand. Apply the prepared binding to quilt.

Swatches Quilt Label

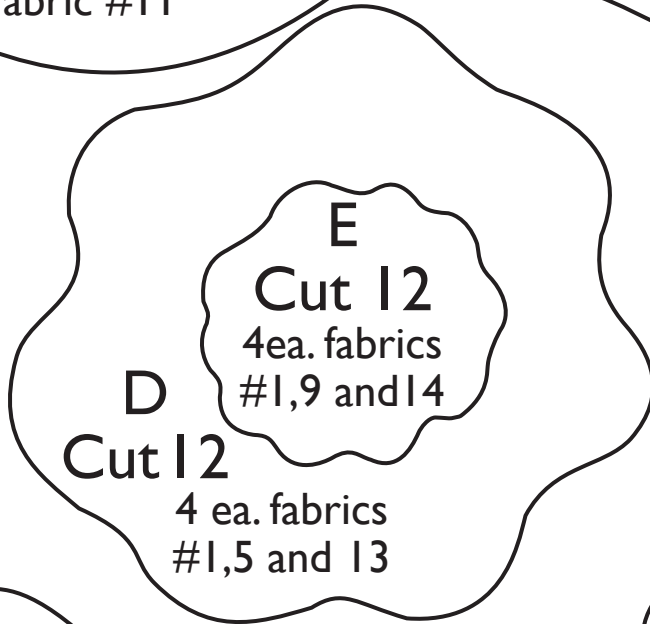
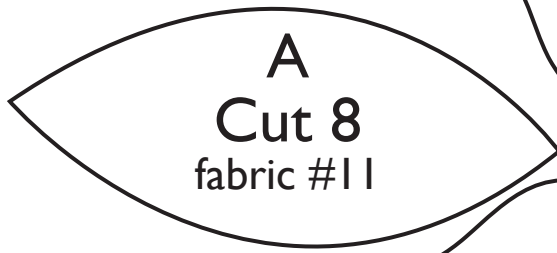
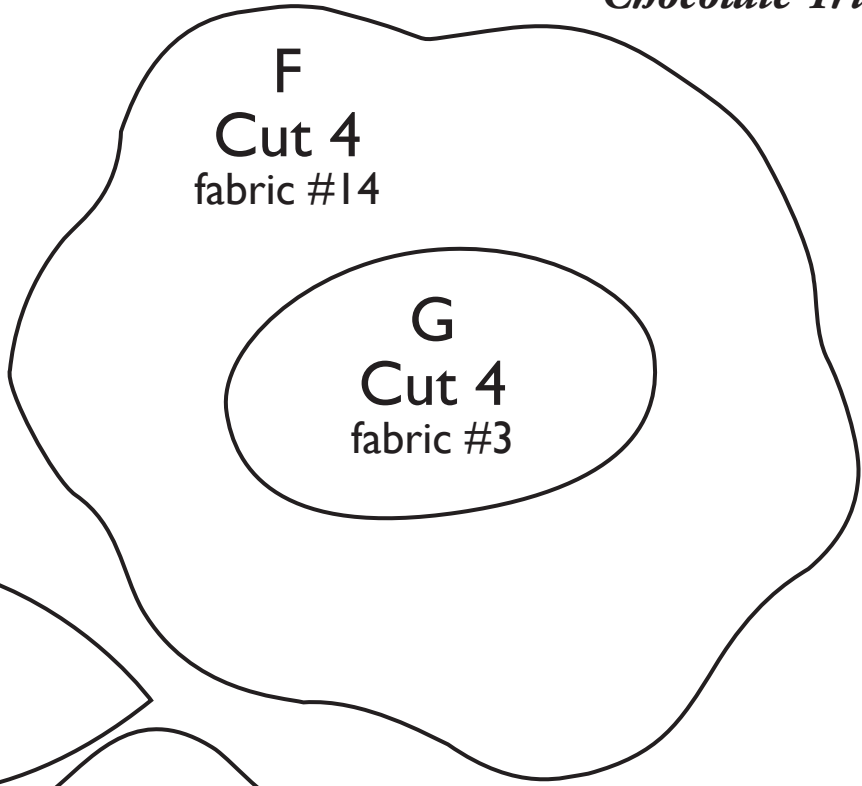
It is always a good idea to sign your quilts and give some information such as name, date and, if it is a gift, to whom it was given. So we have included a pattern for a little quilt label made from (24) 2" swatches.

- Sew 2 strips of four 2" swatches together. Sew 2 strips of eight 2" swatches together.
- Cut a piece of muslin or a very light fabric from the collection used in the quilt, 6 1/2" x 9 1/2". Sew the 2 strips of 4 swatches to each 6 1/2" side of the center fabric. Press seams away from the center rectangle. Sew the 2 strips of 8 swatches to the top and bottom of the label.
- Write your message directly onto the center fabric with a permanent fabric marking pen. Or use your favorite method of writing on fabric.
- Cut a piece of muslin 9 1/2" x 12 1/2" backing. With right sides together place the label to the backing, matching edges. Sew around the entire label leaving a 2" – 3" opening for turning. Clip corners, turn and press.
- Hand stitch the opening closed and appliqué the label to the back of the quilt.

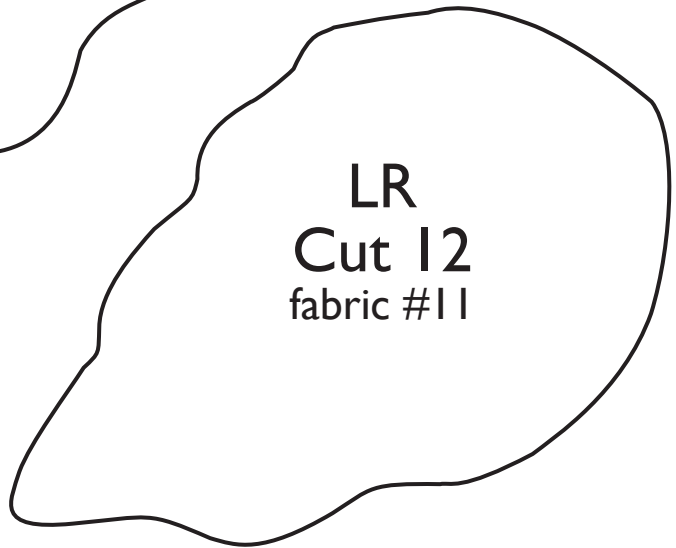
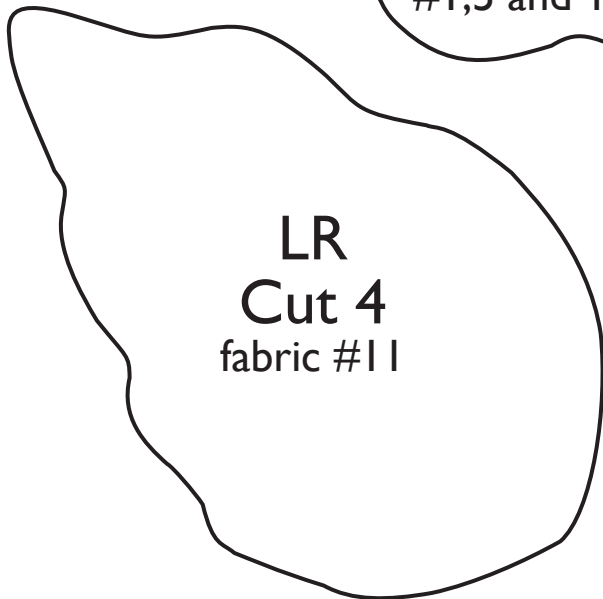


Enlarge illustration
250% for actual size.

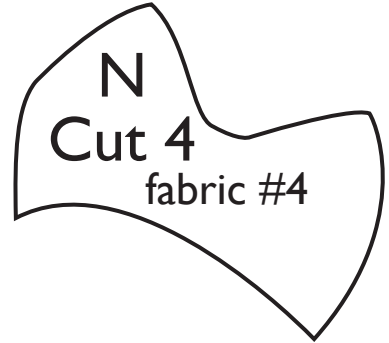
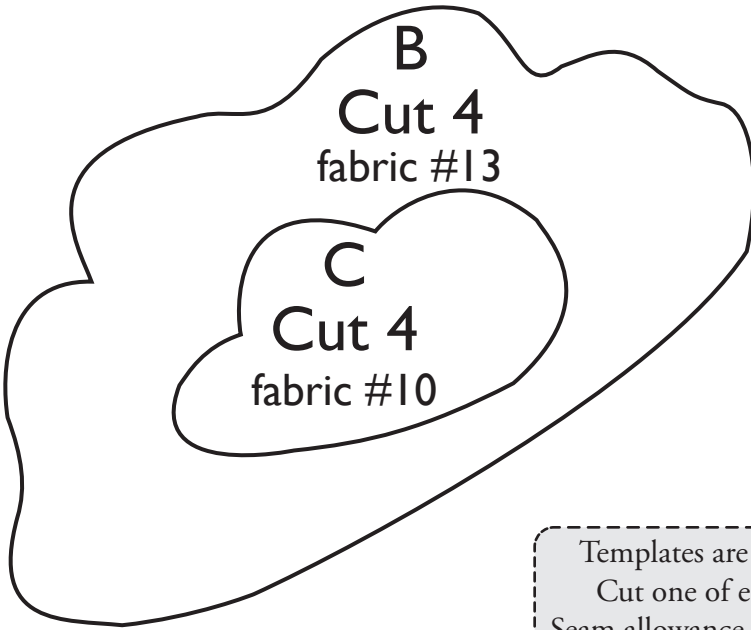
Chocolate Truffles



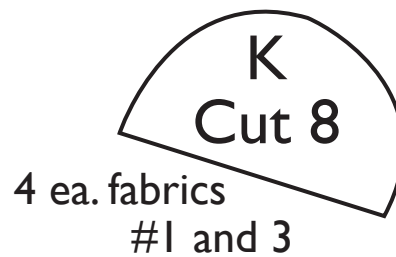
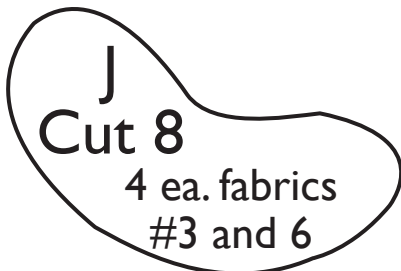
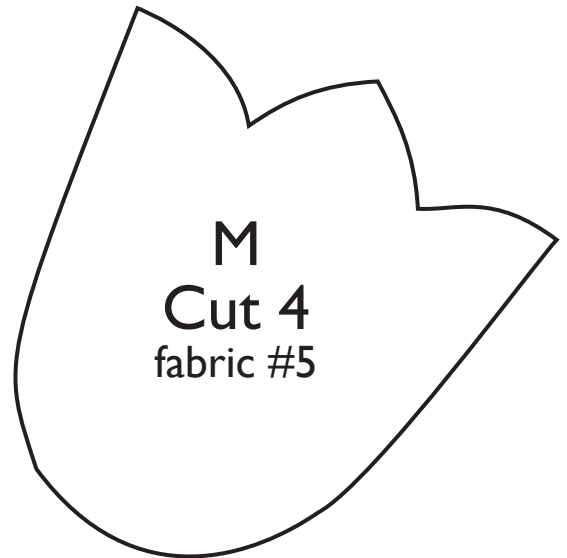
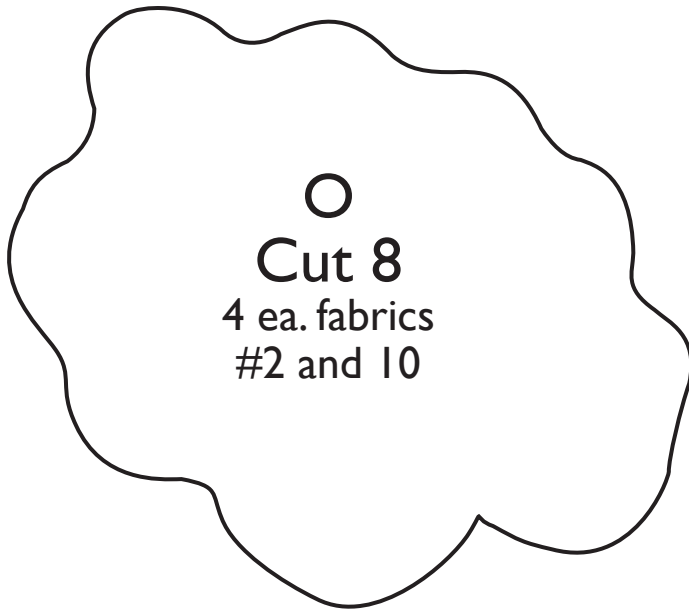
Templates are actual size.
Cut one of each piece.
Seam allowance not included.



Chocolate Truffles



Templates are actual size.
Cut one of each piece.
Seam allowance not included.



Template is actual size.
Cut one piece.
Seam allowance not included.

Vase
Cut 4
fabric #12

