

Moda Friendship Quilt Along

moda

Blog Hop February 18-March 4, 2013

Quilt is 79½" x 92¼".

Fabric Requirements

9 Patches and Pieced Sashing (dark):

one Jelly Roll of your choice
(40-2½" x WOF strips)

Background (light): 3 yards

Border: 1⅝ yards

Binding: ¾ yard

Backing: 8⅝ yards

30 Moda Friendship Quilt Along
9½" blocks (including seam allowances)

Cutting

9 Patches and Pieced Border assorted prints (dark):

7-2" x 22" strips

30-1¾" x 22" strips

Background (light):

6-9½" x width of fabric strips

From the strips, cut 142-9½" x 1¾"

24-1¾" x width of fabric strips

From the strips, cut 48-1¾" x 22"

Border:

8-6½" x width of fabric strips

Sew 2 strips together. Make 4.

Cut 2-6½" x 80¾" and 2-6½" x 80".

Binding:

9-2½" x width of fabric

Sew the strips end to end using a diagonal seam to make the binding.

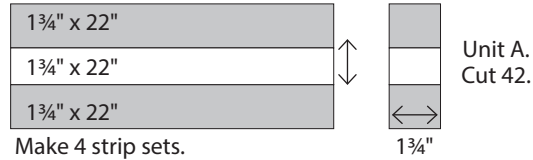
moda

Quilt Construction

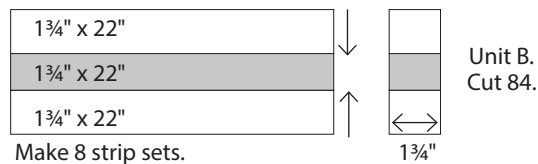
All instructions include a ¼" seam allowance.
Press in the direction of the arrows.

1 9 Patch blocks

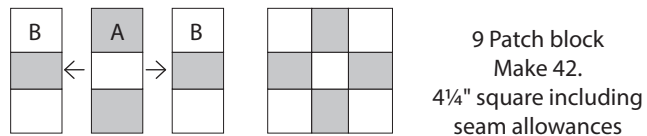
(A) Sew 1-1¾" x 22 light and 2-1¾" x 22 dark strips together as shown. Press toward the dark strips. Cut 11 units from each strip set. Make 4 strip sets. Cut 42 total.



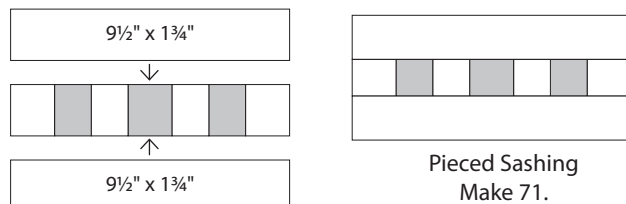
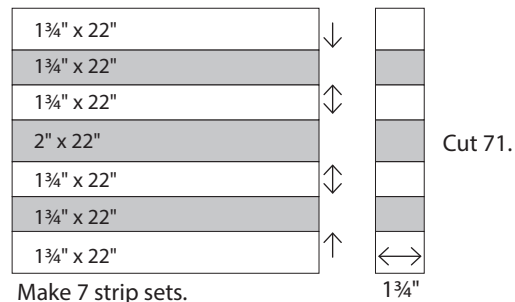
(B) Sew 1-1¾" x 22 dark and 2-1¾" x 22 light strips together as shown. Press toward the dark strip. Cut 11 units from each strip set. Make 8 strip sets. Cut 84 total.



(C) Combine 1 unit A and 2 units B's to make one 9 Patch block. Press away from A. Make 42 total.

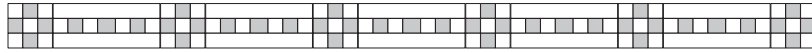
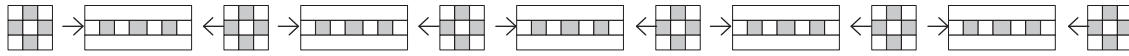


2 **Pieced Sashing:** Sew 4-1¾" x 22" light, 1-2" x 22" dark and 2-1¾" x 22" dark strips together as shown. Press toward the dark strips. Make 7 strip sets. Cut 11 units from each strip set. Cut 71 total. Add 1-9½" x 1¾" light strip to each side of the unit. Make 71 total.



3 Row A

Join 6-9 Patches and 5-Pieced Sashings as shown. Press away from the 9 Patches. Make 7 Row As.

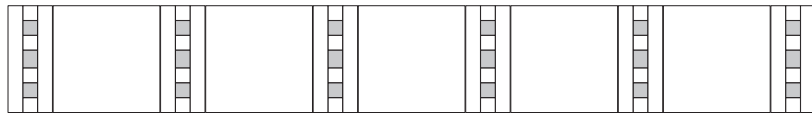
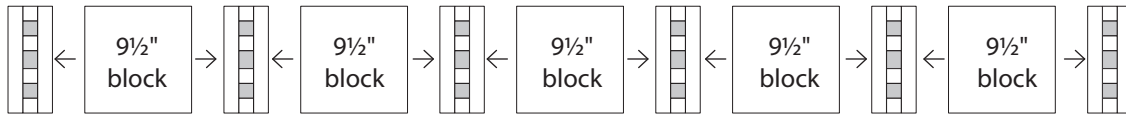


Row A
Make 7.

4¼" x 68" including seam allowances

4 Row B

Join 6-Pieced Sashings and 5-9½" blocks as shown. Press away from the 9½" blocks. Make 6 Row Bs.



Row B
Make 6.

9½" x 68" including seam allowances

5 Quilt assembly

- (A) Join 7 Row As and 6 Row Bs as shown. Press toward Row A.
- (B) Add the 6½" x 80¾" Borders to the quilt sides.
- Add the 6½" x 80" Borders to the top and bottom.
- (C) Layer, quilt and bind. ENJOY!

moda

