

moda

BAKESHOP

Original Recipe



A Charming Maze Quilt by HandmadeRetro

Hi, it is Kristy from HandmadeRetro {handmaderetro.blogspot.com} back with another Moda Bakeshop recipe!

This quilt has been a long time coming... the fabric was lost in the mail and then the replacement package got caught up with the recent mail delays between the US and Australia. So I have a heap of satisfaction to bring you this postage-stamp-style maze quilt!



Ingredients:

- 2x charm packs of Little Apples by Aneela Hooey (because of the mail mix-up I have a layer cake pictured but two charm packs are all that are required for the recipe)
- 2 yards of Etchings Slate for maze path and binding
- 2 yards for border (Little Apples Aqua 18515 13)
- 5 yards for backing (Little Apples Lollipop 18510 11)

Original Recipe can be found at www.modabakeshop.com



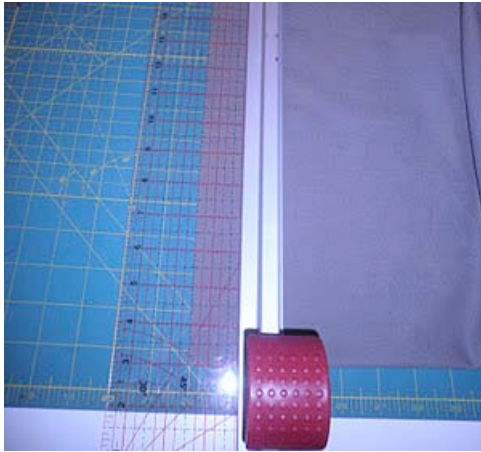
Instructions:

Step One: Cutting the fabric

From the charm squares

Cut each of the charm squares into 4 2.5" squares

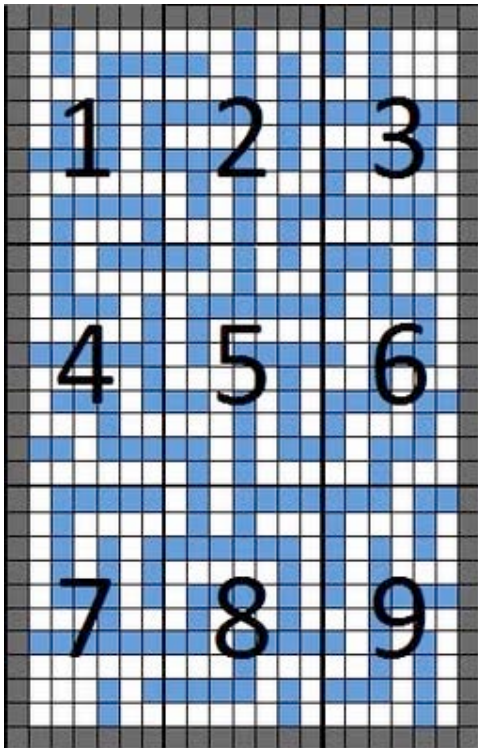
You will also need to cut an extra 11 2.5" squares from a combination of the backing and border fabric



From the Solid fabric:

Cut 20 2.5" strips, sub cut these into 2.5" squares

Cut another 6 2.5" strips and set these aside for the binding



From the border fabric (Little Apples Aqua)

Cut 4 strips down the length of the fabric 9.5" wide and 65" long

Step Two: Construct the maze.

The maze section of the quilt is made up of 9 uneven sections. Each block is constructed in the same manner and diagrams indicate which block goes where in the centre panel.

Construct each of the nine blocks one at a time.

I have gone through the step-by-step construction of a single block below. Each of the nine blocks will be constructed in the same way so I am not going to picture all the steps each time. The process of the block construction is pictured below but remember to refer to the individual block pictures/diagrams for colour placement.

Some tips to keep everything organised.

- Sew a small scrap of fabric to the first seam of each row to mark the block and the row number (this will also orient the left side of the block).
- Work with one block at a time. Sew one square to the right of the last added to build the row, chain piecing.



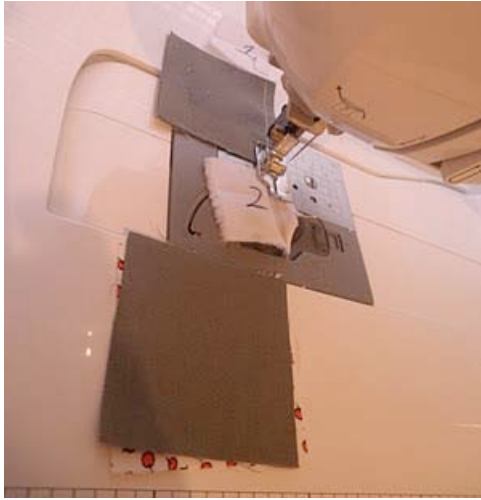
1. Layout the 2.5" squares using the diagram or photo to assist you. If using the diagram, the white squares refer to the solid (maze path) and the blue/grey squares are the print (maze wall).



2. Get ready to start sewing. To keep everything in order I paired the first square in each row by placing square two face down on the top of square one. I then stacked these pairs with the pair for the bottom row on the bottom of the stack. If using the row markers (see below) place these between the pairs.



3. Stack the remaining squares into piles for each row. You can see in this picture I started to stack them by placing the square on the right of the block on the bottom and stacking each square to the left on top. I was left with 10 stacks (11 for blocks 7-9).



4. Chain piece the first pairs of the rows, separating with the markers if you are using them.



5. Leaving the squares joined, take the next square to the right for each row. Stack with the square for row 10 (11) on the bottom and the square for row 1 on the top to get ready to piece. Chain piece these to square 2.



6. Continue until all squares are added, you will have a block that has all the rows sewn together and these joined with threads.



7. Working with two rows at a time, trim the threads between the rows and press all seams in the direction of the arrows. I leave the row markers on at this stage.



8. Nest seams and sew rows together, being careful to keep the row markers free.



9. Repeat with remaining rows, adding pairs of rows to the block as you go.

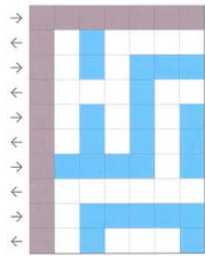


10. Blocks 1-6 will be 7 squares by 10 squares, blocks 7-9 will be 7 squares by 11 squares.

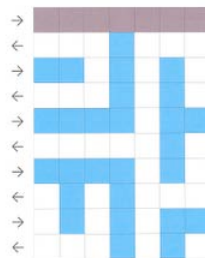
11. Press row seams to the bottom of the even numbered blocks and to the top of the odd numbered blocks. Trim the row markers off.

Individual Block Layouts

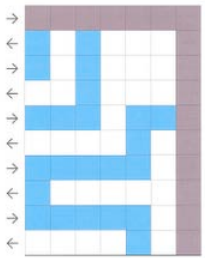
Block 1



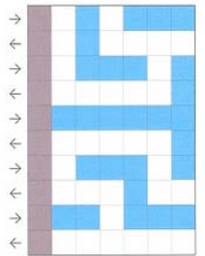
Block 2



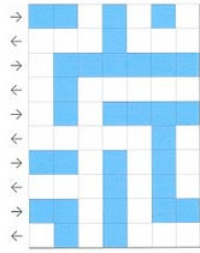
Block 3



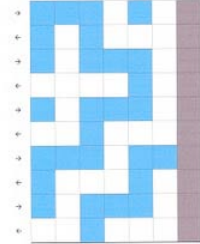
Block 4



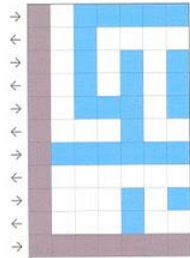
Block 5



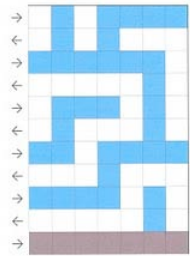
Block 6



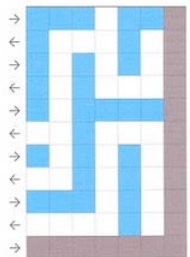
Block 7



Block 8



Block 9





Constructing the Centre Panel

Sew the blocks together in rows, nesting seams again. Press seams to the right in row 1 and 3 and the left in row 2.

Sew the rows together, matching nested seams. Press seams to the bottom of the panel.

Adding the Borders

Measure the panel vertically through the middle of the quilt. Trim two of the border strips to this measurement. Find the centre of the border strips and panels by folding in half and marking with pins. Match centres and edges. Pin, sew, press seam towards the border.

Measure the quilt horizontally through the middle of the quilt. Trim the two remaining border strips to this measurement. Find the centre of the border strips and the quilt top by folding in half and marking with pins. Match Centres and edges. Pin, sew, press seam towards the border.

Prepare the Backing

I prepared my backing with a vertical join. I cut the backing fabric in half and removed selvages and joined. See this useful tutorial <http://bit.ly/dysETk> for how to match up prints.



Baste, quilt and bind

I basted in the 'hedge' to leave the 'path' free for my chosen quilting design.



I quilted my top on my domestic machine 1/4" inside the 'path' with my walking foot. If you start from the beginning or ending square and follow around you will quilt the entire path (except for a small section you will need to do separately using the same technique).



I straight line quilted the border, pacing the lines 3/4". I marked the corners with a Hera marker to make identifying the spot to turn a little easier.



Yield:

One 60"x80" quilt.



Kristy
{handmaderetro.blogspot.com}

Original Recipe can be found at www.modabakeshop.com