

# moda

## BAKESHOP

### Original Recipe



### Follow the Pezzy Brick Road by Jamie Mueller

46" X 55"

Hi Ya'll! It's Jamie Mueller and Jill Rimes of SunFlower Quilts {[sunflower-quilts.com](http://sunflower-quilts.com)} again with our newest Moda Bake Shop project! We had so much fun designing this quilt and it was even more fun to make! It's made with the very popular Pezzy Prints fabric from American Jane and let us tell ya, the fabric is so fun you'll definitely want to get your hands on some! We used one Charm Pack and 1/8 yard cuts of yummy Bella Solids to make this adorable baby quilt!

If you make one please add a photo to our Flickr Group {[flickr.com/groups/sunflowerseedsimadeit](http://flickr.com/groups/sunflowerseedsimadeit)}, we would love to see it! Also make sure you check out BOTH of our blogs for a GIVEAWAY!

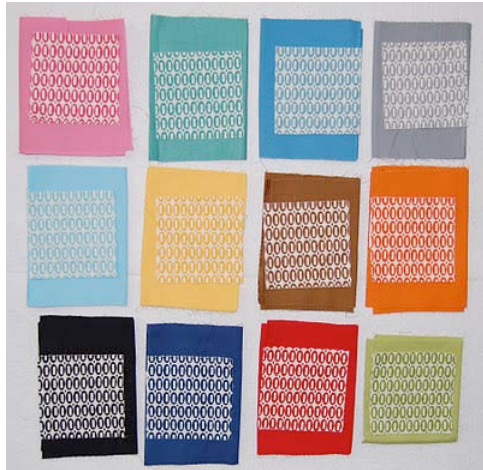
Jamie's blog: {[jamiemueller.blogspot.com](http://jamiemueller.blogspot.com)}

Jill's blog: {[constantlyquilting.blogspot.com](http://constantlyquilting.blogspot.com)}

Original Recipe can be found at [www.modabakeshop.com](http://www.modabakeshop.com)

# Ingredients:

- 1 - Pezzy Print charm pack
- 1/8 yard each of 12 coordinated Bella Solid fabrics
- 1 yard white Bella Solid for sashing
- 1 ½ yards Bella Solid for outer border and binding
- 3 ½ yards backing fabric (we used the red multi pez print)

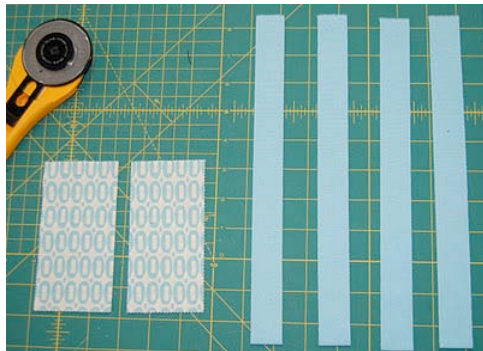


# Instructions:

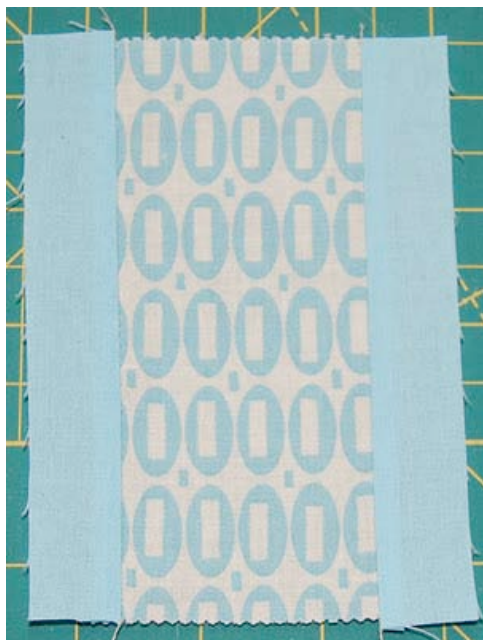
## Making the Blocks

1. Separate the 5” charm squares by color. There will be 12 color groups.

2. Place the 12 different 5” charm color groups with a coordinating Bella Solid fabric. There will now be 12 charm/solid fabric groups.

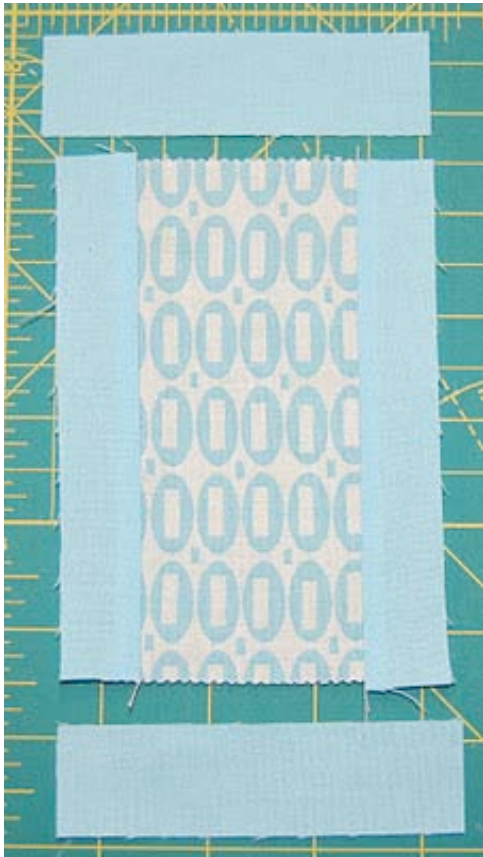


3. Take one group and cut the 5” charm squares in half yielding 2 - 2 ½” x 5” rectangles. Cut the coordinating Bella Solid fabric into 1 - 4” x WOF (width of fabric) strip. From the strip cut into 4 - 1” x WOF strips; then from the 1” x WOF strips cut into 16 - 1” x 5” rectangles and 16 - 1” x 3 ½” rectangles. Repeat for remaining 11 charm/solid fabric groups. (Note: Be sure to keep the 12 coordinated groups separate from one another.)

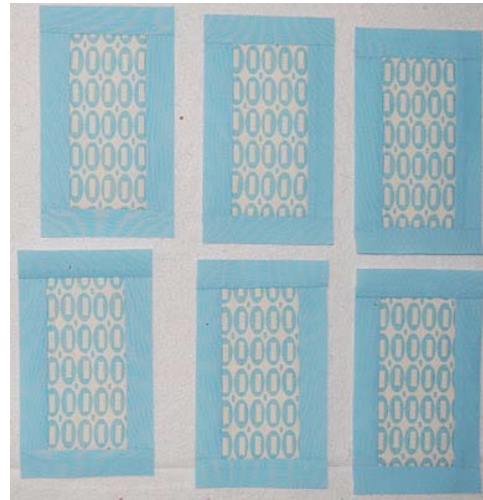


## Sewing the Blocks

1. Take 1 charm/ solid fabric group and sew a 1” x 5” coordinated Bella Solid rectangle to each side of the 2 ½” x 5” charm rectangle. Press to solid fabric.



2. Sew a 1" x 3 1/2" coordinated Bella Solid rectangle to the top and bottom of the block. Press to solid fabric. Square to 3 1/2" x 6". Repeat Steps 1 and 2 for all 80 blocks.



(Note: Depending on the charm square color groups, you will have 6 or 8 blocks)

### Cutting the Sashing

From the Bella solid white sashing fabric cut:

22 - 1" x WOF strips. Set aside 16 of the strips for the inner border and sashing strips. From the remaining 6 strips subcut into 72 - 1" x 3 1/2" rectangles.

Cut 1 - 3 1/2" x WOF strip. From the strip subcut 10 - 3 1/2" squares units.



### Sewing the Sashing

1. Choose 8 Pezzy Print blocks and lay them out vertically. Sew a 1" x 3 1/2" sashing strip to the bottom of the first block. Press sashing to block. Continue sewing a 1" x 3 1/2" sashing strip to the bottom of the next 6 blocks.
2. Sew all 8 blocks together in a vertical row. Press sashings to blocks. Repeat Steps 1 and 2 to make a total of 6 vertical rows that measure 3 1/2" x 48 1/2".
3. Choose 7 Pezzy Print blocks and lay them out vertically. Sew a 1" x 3 1/2" sashing strip to the bottom of the first block. Press sashing to block. Continue sewing a 1" x 3 1/2" sashing strip to the bottom of the next 5 blocks.
4. Sew a 3 1/2" white sashing squares to the top and bottom of each of the 5 rows. Press to pezzy blocks.
5. Sew the short end of 14 - 1" x WOF strips together to make 1 continuous strip.
6. Measure all rows and cut 12 - 1" white sashing strips to that measurement.



7. Layout the rows as shown.

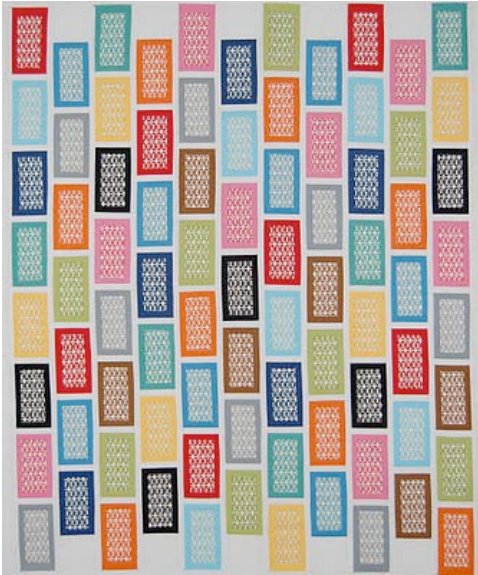
Sew a 1" white sashing strip to each side of rows 1 and 11. Sew a 1" white sashing strip to the right side only of rows 2-9. Press to sashing strip.



8. Sew vertical rows 1-6 together as shown. Press to white sashing.



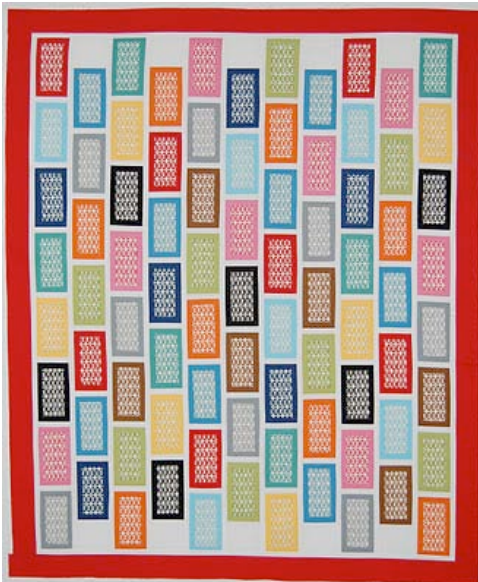
9. Sew vertical rows 7-11 as shown.



10. Sew all rows together from Step 9 & 10 as shown.



11. Measure the center of quilt horizontally with the 2 remaining 1" x WOF white sashing strips. Cut each strip to that measurement. Sew to top and bottom of quilt top. Press to sashing strip.



#### Outer Border

1. Cutting on the lengthwise grain (parallel to selvage) from the Bella solid red border fabric, cut 4 - 2 1/2" x length of fabric.
2. Measure center length of quilt top and cut 2 strips to that measurement. Sew to each side of quilt. Press to border.
3. Measure center width of quilt top and cut 2 strips to that measurement. Sew top and bottom strips on. Press to border.

Quilt as desired.

### **Binding**

From the Bella solid red binding fabric on the lengthwise grain cut 4 - 2 ½" x LOF (length of fabric) strips.

1. Sew all the strips together (short ends) to make 1 continuous strip. Fold binding in half wrong sides together and press. Attach binding to right side of quilt (raw edges even) and machine stitch all the way around. Turn binding to back and hand stitch down.

## Yield:

Your quilt is finished!! Enjoy! Please email us photos or add them to our Flickr Group {[flickr.com/groups/sunflowerseedsimadeit](http://flickr.com/groups/sunflowerseedsimadeit)}, we'd love to see them!



Jamie Mueller  
{[sunflower-quilts.com](http://sunflower-quilts.com)}

*Original Recipe can be found at [www.modabakeshop.com](http://www.modabakeshop.com)*