

moda

BAKESHOP

Original Recipe



Piece of Cake Apron by Elizabeth Scott

Ingredients:

1 layer cake
5/8 yard for pocket lining and lower ruffle
1/4 yard tie ends and upper ruffle
(3) 3/4" buttons

Garnishes (optional):

3/4 yard 3/4" rick rack

Original Recipe can be found at www.modabakeshop.com

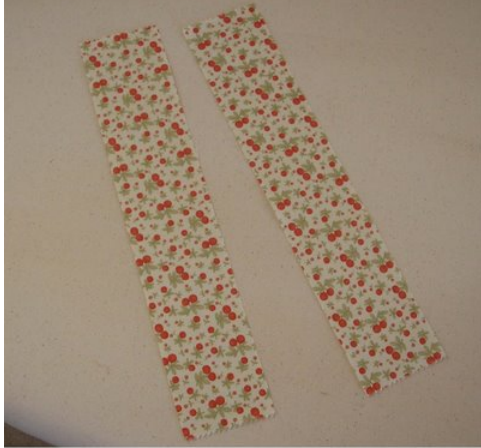
Instructions:



Note: all seam allowances are 1/4" unless otherwise indicated.

Step 1

Choose your favorite square for the front pocket.



Step 2

Pick a square for the pocket trim and cut (2) strips 1 1/2" wide.



Step 3

Stitch to each side of the pocket and press toward the pocket trim.



Step 4

Turn in 1" on upper edge of pocket and press. Set aside.



Step 5

Choose a minimum of 6 different squares and cut each into (9) 3" x 3" squares.

Original Recipe can be found at www.modabakeshop.com



Step 6

Arrange squares and stitch into 6 rows of 9 squares each. Press seams of odd numbered rows to the left and even numbered rows to the right.



Step 7

Stitch rows together. Press the seams in one direction.



Step 8

Turn under 1/4" and then another 1/4" to make a narrow hem on each side. Stitch close to fold. Turn under 1/4" and then 1 1/4" on the upper edge and press.



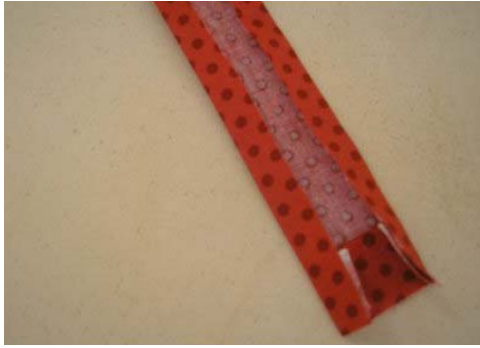
Step 9

Stitch "in the ditch" of the top seamline. This will form your casing.



Step 10

To make tie ends, cut (2) strips 2 1/2" x width of fabric. Stitch strips together along one short side. Press seam open. Press tie in half lengthwise forming a crease.



Step 11

Open tie and turn in short ends and press. Press long raw edges to meet center crease.



Step 12

Fold in half again and topstitch close to edge.



Step 13

To make the double ruffle, cut (1) strip 2 1/2" x width of fabric and (1) strip 5" x width of fabric. Turn under 1/4" and another 1/4" to make a narrow hem on both short sides and one long side of each ruffle strip. Place the upper ruffle on top of the lower ruffle with wrong sides together and raw edges even. Stitch 2 rows of machine basting stitches within the seam allowance. Pull up the gathers to fit the width of the apron.



Step 14

With right sides together, pin ruffle to bottom of apron. Stitch ruffle. As you can see from my photo, you can easily do this late at night when the lighting is poor! Press the ruffle down. Topstitch rick rack over the seam if desired. Insert tie through the casing.



Step 15

To make detachable pocket cut a square of fabric 13" x 13". Pin the right side of the pocket to the wrong side of the lining. Beginning at the top edge of the lining, stitch one side seam, then stitch across the bottom, then back up the other side seam ending at the other top edge of the lining, using 5/8" seam allowance.



Step 16

Turn pocket. Clip the lining where it meets the top of the pocket close to stitching.



Step 17

Fold remaining seam allowance of pocket lining to the back, tucking in the raw edge. Press under the top edge of the pocket lining 1/4" and then another 1 1/2" forming a hem. Topstitch sides of lining, close to fold, from top edge to top of pocket.



Step 18

Mark and stitch 3 buttonholes for the (3) 3/4" buttons. Center one buttonhole and the others should be placed 3/8" from each side. The buttonholes should begin 1/4" from the top.



Pin the pocket in place on the front of the apron matching centers. Mark position of buttons and stitch them in place. Now you're finished! You can wear your new apron with or without the pocket.

Yield:

1 layer cake will give you enough squares to make 5 aprons.

Wasn't that fun? You've got enough squares left over to make some more! I'll bet you can think of someone who would love an apron of their own.

If you'd like to know what else I'm up to besides cutting up squares and stitching late into the night, please come see me at my websites.

Elizabeth Scott

<http://the-latebloomer.blogspot.com>

<http://www.latebloomerquilts.com>

Original Recipe can be found at www.modabakeshop.com