

moda

B A K E S H O P

Original Recipe



Simply Modern Quilts by Angela Yosten

Ingredients:

Boy (Route 66) Quilt...

- 1 Moda Jelly Roll Basics in Milk
- 1 Authentic Jelly Roll by Sweetwater
- 3 1/4 yards of coordinating fabric for backing, binding and pillow case
- 1 1/2 yards of Pellon Wonder-under fusible web
- Soy Soft by Luna Batting
- coordinating thread
- Route 66 templates (located at the end of the Printable Version below)

Girl (Eva Flower) Quilt...

- 1 Moda Jelly Roll Basics in Sugar
- 1 Eva Jelly Roll by Basic Grey
- 3 1/4 yards of coordinating fabric for backing, binding and pillow case
- 1 1/2 yards of Pellon Wonder-under fusible web
- Soy Soft by Luna Batting
- 2 yards Trim Trends Jumbo Ric Rac (1 3/8") in Light Pink
- coordinating thread
- Large and Small Eva flower templates (located at the end of the Printable Version below)

Original Recipe can be found at www.modabakeshop.com

Instructions:

1. Sew 32 of the basic jelly roll strips together using a 1/4" seam allowance creating a background fabric for your appliques.



HINT: When sewing your Jelly Roll strips together make sure your strips match up end to end so you don't get a curve in your finished piece. As you are sewing match the very tops together... sew a little bit... make sure your needle is in the down position, then pull the strips so that the folds match with each other holding it in place while sewing to that point... then while your needle is in the down position again on the fold... pull the strips again so that the bottom of the strips match up together holding it in place while you finish sewing to the bottom of the strips. Repeat for each strip until all 32 strips are sewn together.



2. Iron the seams down all going in the same direction.



3. Separate your Authentic or Eva (or any other collection you wish to use) into color groups. Set aside 1 Jelly Roll strip that you wish to use on your coordinating pillowcase.

Sew the strips together in groups. For example... sew all the blacks together then set that group aside. Then sew all your creams together and then set aside.

For the Route 66 quilt... I stitched 9 black strips together and 9 cream strips together
For the Eva Flower quilt... I stitched together 10 purple strips, 6 pink strips and 6 green strips



4. Iron your seams down in all the same direction on both color sets. Top stitch your seams down as shown below.



5. Print out the template you wish to use (route 66 or eva flower or your own design), tape the templates together and then layout on your background fabric to see placement.

6. Iron on Pellon Wonder-under or your favorite fusible web to the back side of the colored fabrics. (just enough to fit your applique templates for each color.)



7. Cut out the templates you wish to use and trace them UPSIDE DOWN to the back side of your fused fabric. Cut out the pieces. Shown are the black pieces for the Route 66 applique.



8. Remove the paper backing and fuse in place to your background fabric.



9. On the paper template, cut out all the black parts so you should now be left with only the white section of the template.



10. Trace the template UPSIDE DOWN to the back side of your fused cream fabric strips.



11. Iron the cream applique in place. If you are using the Eva template then you can use the images towards the end of the tutorial of the flower quilt as a guide.



12. Sandwich your backing fabric, batting and quilt top together and safety pin in place. Please note... the width of your backing fabric may be slightly shorter than the quilt top. This is okay. Just try to match them up as close as possible. You will trim all the sides down to match up once your quilting is done.

13. Machine applique your iron-on pieces down. This will also help create the quilted look on the back side of your quilt.



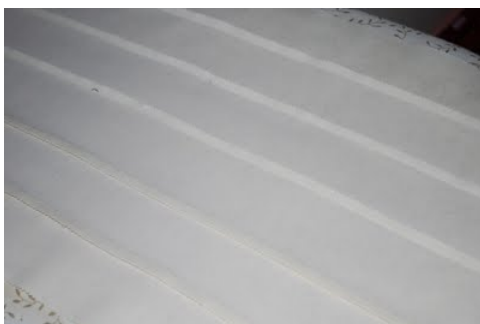
14. To complete the quilting of your quilt, top stitch the seams down on the basic jelly roll strips. I skipped over the appliqued pieces since there is stitching around each of the pieces when you machine appliqued those pieces down. Bind and your quilt is done.

MATCHING PILLOW CASE



You will need your coordinating backing fabric, 6 strips from your basic jelly roll, and the 1 strip you set aside from your other jelly roll.

1. From your coordinating backing fabric, cut 27" x Width of fabric.



2. Just like you did with the background fabric for your quilt, sew 6 strips together to use as your pillowcase flange. Iron the seams down 3 seams in one direction and 2 in the opposite direction.



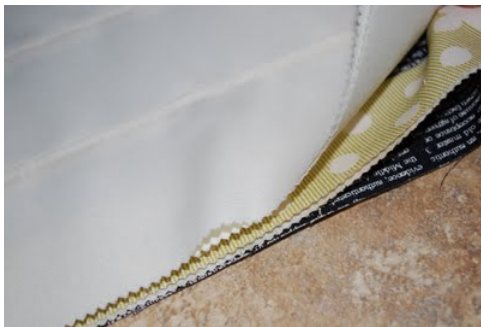
3. Fold the sewn strips in half on the middle seam with wrong sides together. Press.



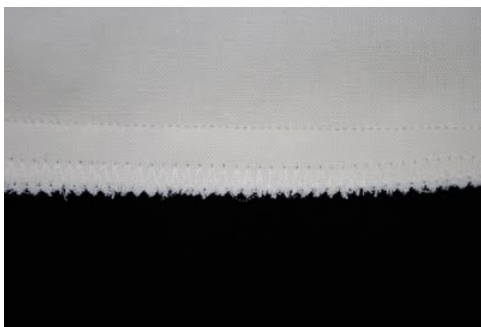
4. Top stitch the seams down using a 1/8" seam giving the flange a quilted look.



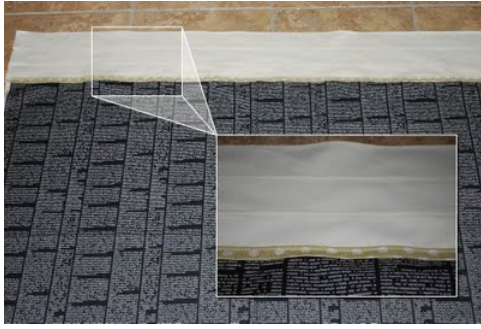
5. Fold and Iron the coordinating Jelly Roll Strip in half lengthwise.



6. Match up all the raw edges of your coordinating pillowcase fabric, then the coordinating jelly roll strip, then the basic jelly roll strip flange.



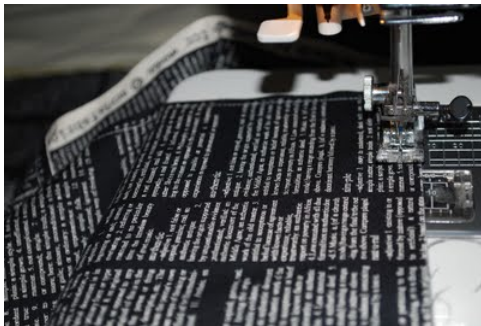
7. Pin and sew with a 1/2" seam allowance. Finish the edge with a zig zag stitch so you don't have raw edges.



8. Open the seam so that the coordinating jelly roll strip folds down towards the pillowcase fabric. Top stitch the seam down on the coordinating jelly roll strip to keep the strip staying down.



9. If you wish to add applique to your pillowcase, do this now. I placed my stop and go appliques 4" from the bottom and 4" from the side.



10. Fold the pillow case in half with the raw edges matching up and the flange edges matching up. With a 1/4" seam sew the raw edges down **WRONG** sides together.



11. Flip the pillowcase wrong side out and press all seams. Stitch again on the raw edges now with a 1/2" seam. You are now creating a French seam. This will enclose all your raw edges so you will not have any visible threads.

Flip the pillowcase right side out and WA-LA a new pillow case to match your new quilt!

Original Recipe can be found at www.modabakeshop.com

Yield:

Simply Modern Boy and Girl Quilts for your special little ones.
Each quilt measures approx.

Route 66 Quilt and Pillowcase...



Eva Flower Quilt and Pillowcase...



Angela Yosten

<http://modahomemom.blogspot.com>

Original Recipe can be found at www.modabakeshop.com