

moda BAKESHOP

Original Recipe



Sliced Tutorial: Quilt Story Apron



Original Recipe can be found at www.modabakeshop.com

Hello!! I'm back sharing another tutorial from a project I made for the Moda Sliced Competition! You can also check out my Pea Pod Pincushion tutorial {<http://bit.ly/GVg7Vq>} from the competition. I hope you enjoy making this sweet apron. Make sure to come and say hi at Quilt Story {quiltstory.blogspot.com} too! :)

Ingredients:

2-3 fat quarters for bodice and pockets
Six 1/4-yard cuts for skirt and ruffles
1/4 for scallops
1/4 yard for neck straps
Fat quarter for center waistband
1/3 yard for waistband ties

Pattern Pieces:

Main Bodice
Side Bodice
Top Band
Scallop & Pocket

Garnishes (optional):

Four 1-yard cuts of ric rac, lace, pom poms, etc.
1-yard medium weight interfacing for bodice and pockets
Tape measure for flower pin
1-yard thin ribbon

Instructions:

*** Use half-inch seams for construction of this apron unless otherwise noted.

***The bodice for this pattern is a women's size 5.



Part 1: Bodice Construction

Use a medium-weight interfacing and sew bodice sides to main bodice piece, then add the top band. Main bodice pattern, side bodice pattern, and top band pattern are included in the Printer Friendly Version. Repeat and create an identical lining piece, no interfacing needed.

Add iPod pocket to inside of lining. Cut two pieces, 5" x 6" and interface one piece. Sew right sides together along each side and top, leave the bottom open. Turn right side out and press. When pressing, turn in the edges of the unfinished bottom by 1/4" and press. Add a trim along the finished top if you'd like. Pin the pocket in place and sew around sides and bottom. Reinforce the tops of each side.

Next, top stitch a ribbon across the seam of top band and bodice. Create a bow and tack into the middle of ribbon bodice.

Create neck straps by cutting 2 strips of fabric, 4" x 38". Fold in half lengthwise and sew down entire strip with an angle at the end. Turn right side out and press.

Original Recipe can be found at www.modabakeshop.com



Next is the bodice ruffle trim. Fold in half lengthwise RST (right sides together) a piece of fabric measuring 2.5" x 20". Sew short edges together. Turn right side out and press. Run a narrow gathering stitch along raw edge. Gather to a ruffle to match the top of the bodice. Add the ruffle with a narrow top stitch to front apron bodice piece, along the top band piece. *Minding the half-inch edges on each side of bodice.



Put bodice and lining RST and pin neck straps in between and to the sides of bodice. However you will leave a little more than a half-inch on edges so they don't get sewn into the seam. Stitch together sides and top, turn inside out and press.



Bodice complete.

Part 2: Skirt Construction

Cut 5 strips for the skirt. From top to bottom my measurements are 5.5", 6", 4.5", 5.5" and 3.5" inches long, all by 25" inches wide. Sew together in that order.

Using the trims, and coordinating threads, sew trims cross all the seams (as pictured). Serge or turn side edges in 1/4" and 1/4" again and stitch to finish sides of apron.

Make a wide gathering stitch across top of apron as shown.

Original Recipe can be found at www.modabakeshop.com

Create your bottom ruffle by cutting a piece of fabric 2" x 40", turn bottom edge 1/4" in, and 1/4" in again press and stitch. Do this to the two sides as well. Make a wide gathering stitch 1/4" from raw edge. Gather evenly to match apron width. Set aside.



Cut scallop fabric in half widthwise, to have two pieces 4.5" x WOF. Using the scallop pattern {in the Printer Friendly Version}, trace onto the wrong side of your fabric and create four full scallops. Take the wrong sides of the scallop fabrics and pin together. Sew along tracing and trim 1/4" around. Turn right side out and press.

Take your ruffle and scallop and with RST pin to the apron along the bottom edge. Serge or stitch 1/4". Open and press. Do a very narrow top stitch on the bottom apron edge.

Create your pocket using pattern piece {found in the Printer Friendly Version}. Embellish as you would like with trim, different fabrics, embroidery etc. Using same pattern piece create a lining piece out of white or coordinating fabric. Interface one side of the pocket. Using 1/4" seams, stitch around the sides and rounded bottom of pocket, leaving the top open. Turn right side out and press. Turn top edges in about a 1/4", press really nicely and top stitch closed. Pin pocket in place on apron and use a narrow top stitch to stitch in place. Be sure to reinforce each side at the top.

Gather top of skirt to match finished apron top. With RST pin and sew or serge together.

Part 3: Finishing

Using the fat quarter piece for the center waistband cut a piece 7" x 13". RST sew together lengthwise. Press with the seam in the center. Also press the short ends 1/4" in for a finished look, but do not stitch yet. Set aside. Cut two waistband ties 6" x 34". RST sew together lengthwise and on one end of each finish at an angle. Turn right side out and press.

Place the waistband ties into the unfinished edges of the center waistband piece. Center the waistband piece over top of the bodice and skirt seam. Pin in place and sew a narrow top stitch around the entire center waistband, closing the sides as you go.



Part 4: Tape Measure Flower Pin, optional





Clip metal ends of measuring tape off. Using hot glue, create a circle center roughly the size of a finger. Create petals by softly folding measuring tape and gluing to center. Alternate sides of flower while rolling and rotating softly. Start with smaller folds and get larger as you get to the end of the flower. Try first without glue to get a feel for the process.



Once you've finished the tape measure flower you can add some fabric petals or leaves. Fold a 2" piece of fabric in half and in half again. Trim raw edge sides into a curve. Add hot glue and place little fabric petals within the measuring tape flower. Create larger petals using the same method and 3" pieces of fabric. Put 3-4 of these at the base of the measuring tape flower. Hot glue a pin clasp thing (that's what they are called right) :) to the back of the flower, and pin where you would like.

Yield:

One darling apron!

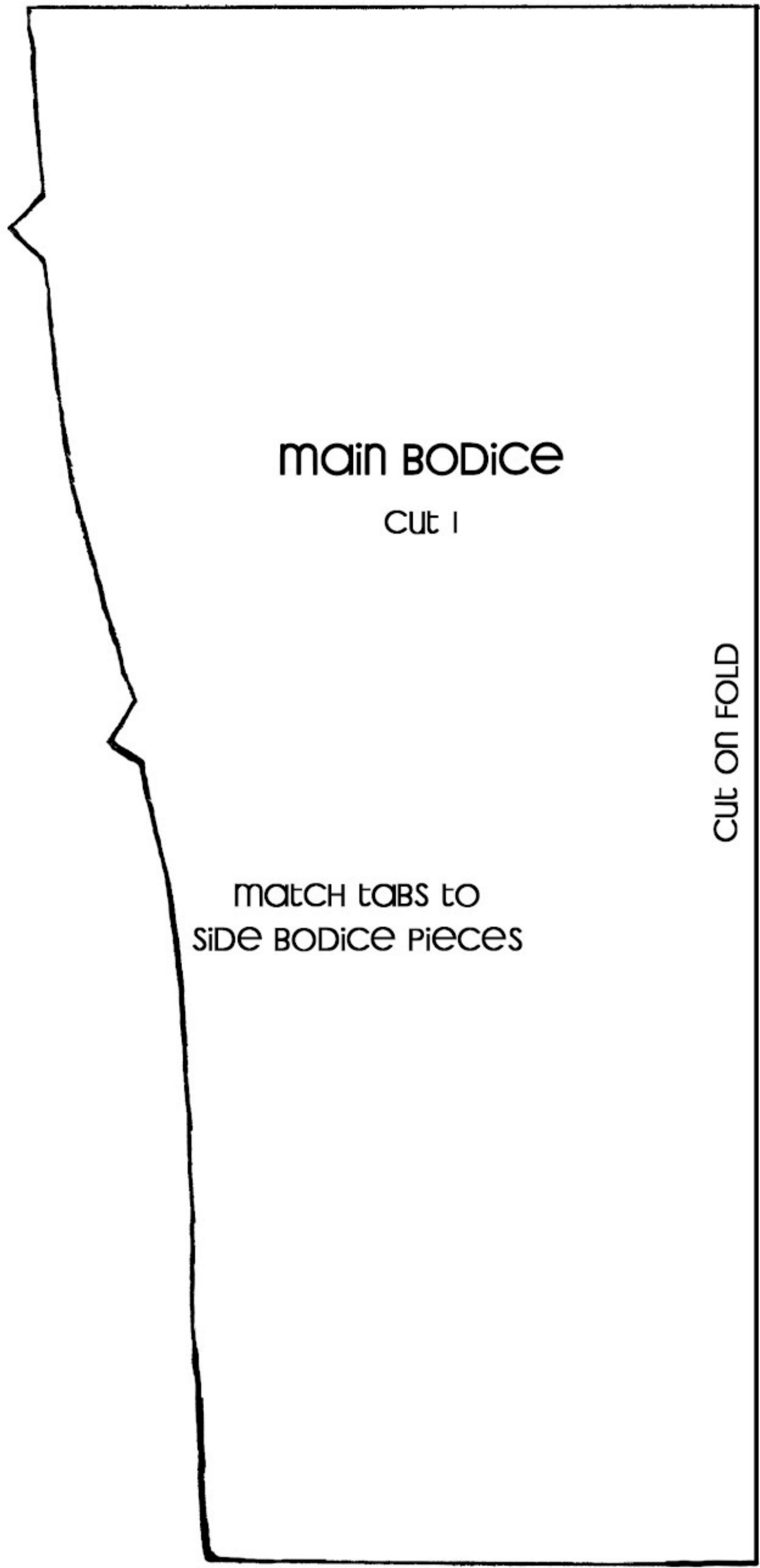
Thank you so much for all of you who left comments during the competition, it was so much fun and we had a blast! Thanks to Moda too!! :) I'll be posting a tutorial for my portable file folders soon!

Be sure to visit our blog, Quilt Story. We'd love to have you!

Quilt Story
{quiltstory.blogspot.com}



Original Recipe can be found at www.modabakeshop.com



main BODiCe

cut 1

MATCH TABS to
SIDE BODiCe PiECES

CUT ON FOLD

QUILT STORY

APRON FOR MODA'S SLICED CONTEST

QUILTSTORY.BLOGSPOT.COM



SIDE BODICE
cut 2

MATCH TABS TO
main BODICE piece

QUILT STORY

APRON FOR MODA'S SLICED CONTEST

QUILTSTORY.BLOGSPOT.COM

Cut ON FOLD

TOP BAND

QUILT STORY

APRON FOR MODA'S SLICED CONTEST

QUILTSTORY.BLOGSPOT.COM



SCALLOPS

TRACE SCALLOPS ONTO
FABRIC UNTIL YOU HAVE
4 FULL SCALLOPS



POCKET

CUT ON FOLD

QUILT STORY

APRON FOR MODA'S SLICED CONTEST

QUILTSTORY.BLOGSPOT.COM