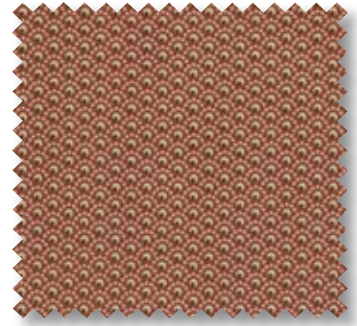


Civil War HOMEFRONT

Barbara Brackman



8154 18 RED



8151 16 RED



8152 21* RED



8153 17* RED



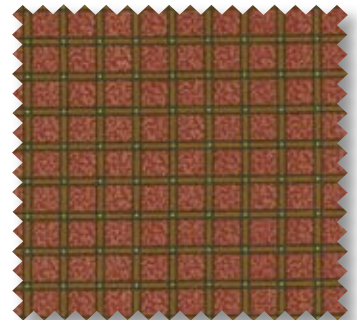
8150 26 RED



8156 23 RED



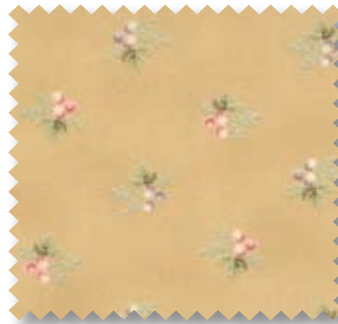
8155 20* RED



8157 20 RED



8150 21* TAN



8153 11 TAN



8155 12 TAN



8151 11* TAN



8154 14* TAN



8158 11 TAN



8156 20* TAN



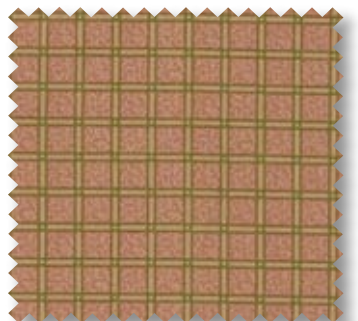
8154 16* TEA



8156 22* TEA



8155 18 TEA



8157 16 TEA



8150 25* TEA



8158 15* TEA



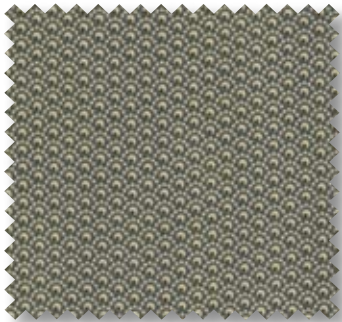
8152 22* NAVY



8154 17* NAVY



8153 18* NAVY



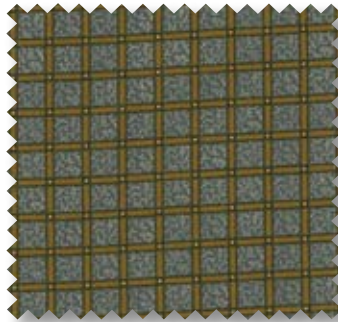
8151 17 NAVY



8155 21* NAVY



8150 31 NAVY



8157 21 NAVY



8153 14* BROWN



8156 26 NAVY



8155 17* BROWN



8158 14* BROWN



8157 14 BROWN



8152 23 COFFEE



8158 19 COFFEE



8151 18 COFFEE (ENLARGED 100% TO SHOW DETAIL)



8153 19 COFFEE



8155 22* COFFEE



KIT8150 QUILT MEASURES: 79½" x 79½"

QUILT AND PATTERN TO BE FEATURED IN
Quilters Newsletter Magazine – November, 2009

Delivery: November 2009

44"- 45" 100% Cotton

Asst. 8150-15 15 yards of each
Asst. 8150-10 10 yards of each
Asst. 8150-10H 10 yards of 18 skus*

8150AB Bundle: 38 Skus
8150HB Honeybun: 40 Strips- Pk.6
8150JR Jellyroll: 40 Strips- Pk.4
8150LC Layercake: Pk.4
8150PP Charm Pack: Pk.12
8150TO Turn Over: Pk.8

KIT8120 –Kit includes fabric, pattern & binding

*HB's, JR's, LC's, PP's & TO's include 2 each of
8151-11 & 17*