

LOVELY

Sandy Gervais



17574 11*



7521 431



17573 11



17572 11*



17576 11



17577 11*



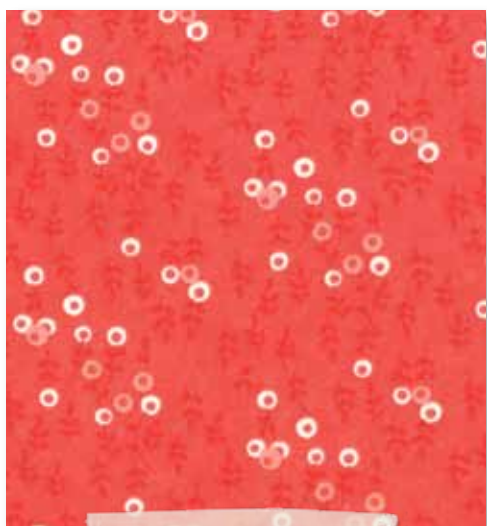
17571 11*



PH 513/ PH 513G
Lovely Quilt 60" x 60"



17580 11*



17574 12



7521 432



17570 11*

* Reduced to show pattern



17572 12



Sandy Gervais



Growing up on a Minnesota farm, Sandy Gervais and her sisters became experts at “making do”. “We used spools to make high heels and tin foil for diamond rings,” says Sandy. “The net bags that held potatoes were the perfect veil for pillbox hats we cut from oatmeal boxes. We were very creative.”

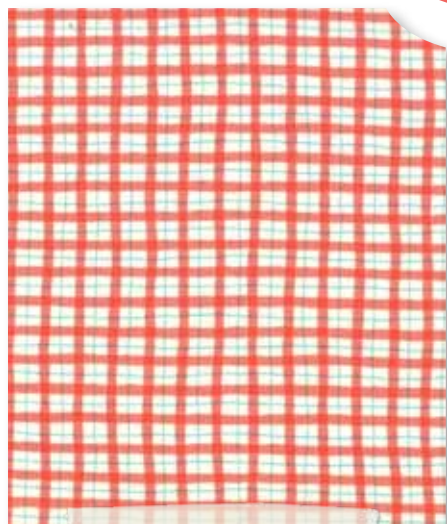
Their creative impulses didn't end there. Sandy's mom taught the three girls to sew for 4-H and they made all their clothing through high school. “We took turns using our one sewing machine,” says Sandy.

Despite being a seamstress extraordinaire, Sandy had other career aspirations. “I wanted to be an artist, but my high school counselor advised against it,” she says. “He suggested I become a P.E. teacher or a nurse!” Instead, in 1988 Sandy designed and sold greeting cards. Soon she converted her drawings into small quilts and pattern design followed. In 1994 she joined forces with Moda and has been designing fabric, up to six lines each year, ever since.

Sandy's business is a family affair: her husband's printing company produces her patterns and books. Her son and daughter bagged patterns when they were younger and Sandy taught them both to sew. Today, daughter Abby creates projects with charm squares and jelly rolls and son Anthony has made several quilts, including one for his cat. He and his fiancé also completed matching quilts for friends with twins.

And Sandy's mom? “In every fabric store she visits she lets everyone know her daughter designs fabric,” says Sandy. “It's a little embarrassing, but really I love that she's our biggest fan.”

LOVELY *Sandy Gervais*



17575 12



17578 12*



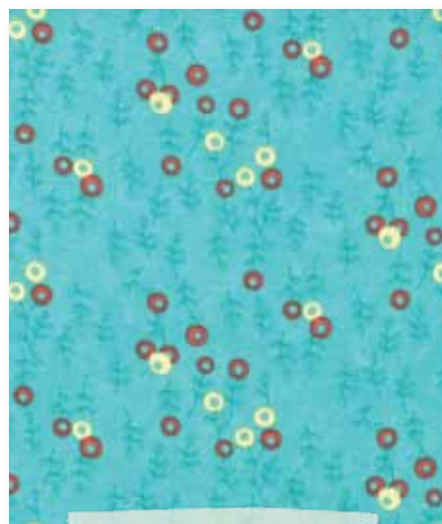
17571 13*



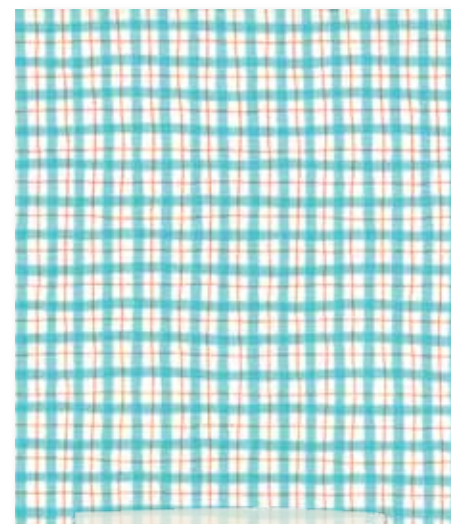
17572 13



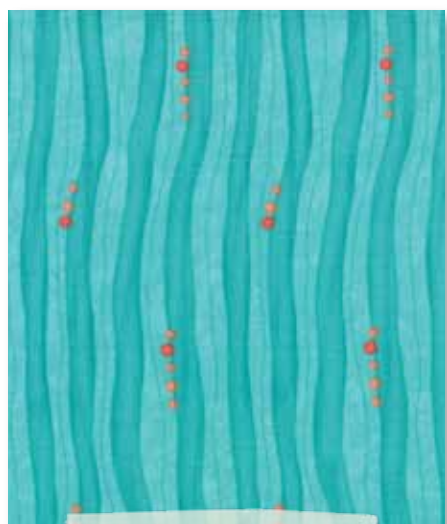
17573 13*



17574 13



17575 13*



17576 13



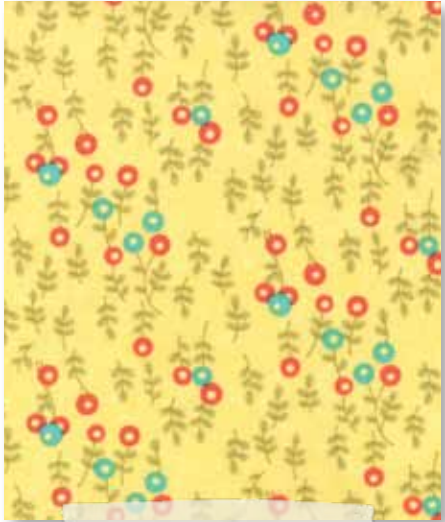
17577 13*



7521 433



17579 13



17574 14*



7521 434



17572 14*



17573 14



17571 14*



PH 518/ PH 518G
Four O'clocks Quilt 90" x 90"

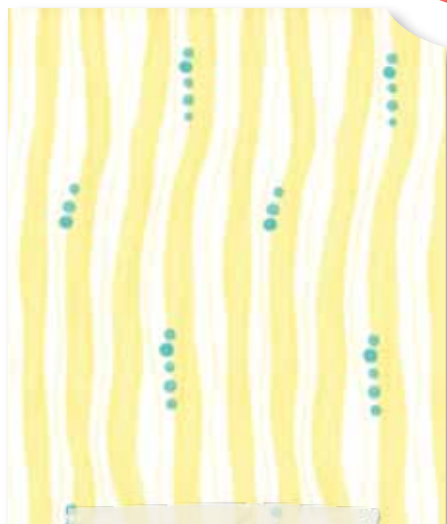


17578 24*

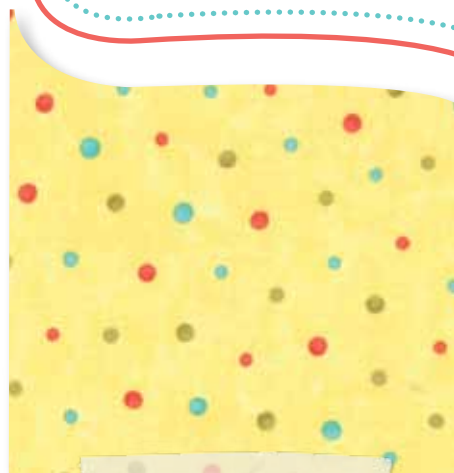


17575 14

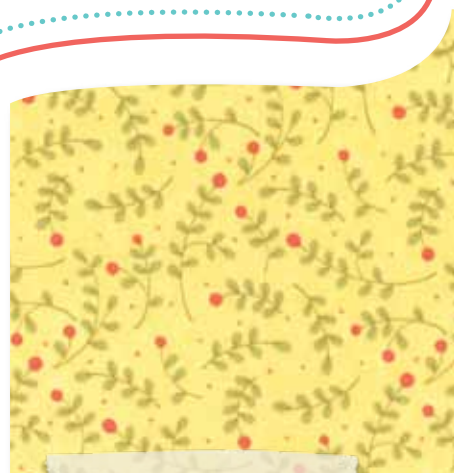
LOVELY *Sandy Gervais*



17576 14



17577 14



17580 14*



17578 15



17571 15



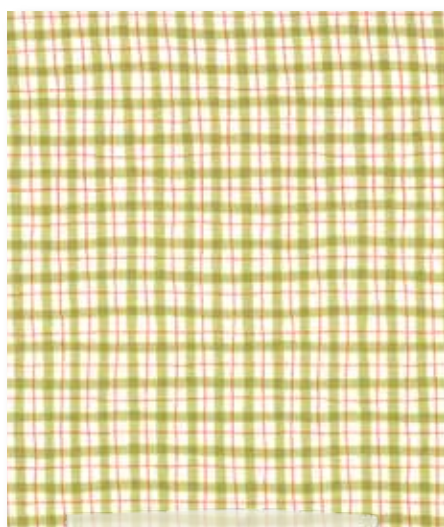
17578 22*



17579 15*



17580 15*



17575 16



17579 16*

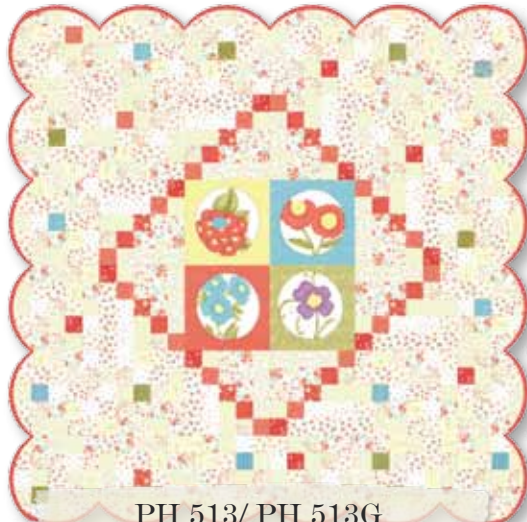


7521 436

Patterns



PH 516/ PH 516G
Best of Show Quilt 42" x 42"



PH 513/ PH 513G
Lovely Quilt 60" x 60"



PH 518/ PH 518G
Four O'clocks Quilt 90" x 90"



PH 517/ PH 517G
Egg-stra Special Quilt 32" x 24"



PH 514/ PH 514G
Perfect Arrangement Quilt 30½" x 33"

Sandy Gervais

February Delivery

SKUS: 41 PRINTS

CONTENT: 100% COTTON

- ASST. 17570-15 15 YARDS OF EACH
- ASST. 17570-10 10 YARDS OF EACH
- ASST. 17570-10H 10 YARDS OF 20 SKUS*
- 17570AB BUNDLE: 41 SKUS 18" x 22"
- 17570F8 BUNDLE: 40 SKUS 9" x 22"
- 17570JR JELLYROLL
(40) 2½" x 45" STRIPS – PK 4
- 17570LC LAYER CAKE
(42) 10" x 10" SQUARES – PK 4
- 17570PP (42) 5" x 5" SQUARES – PK 12

*F8's, JR's, LC's and PP's do not include panel.



PH 515/ PH 515G
Kitchen Maids