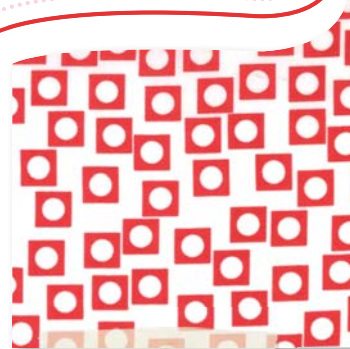


Sherbet Pips

Aneela Hoey



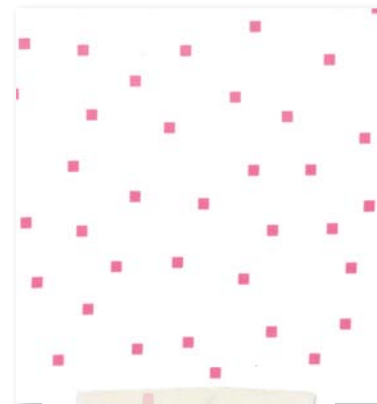
18500 11



18506 12



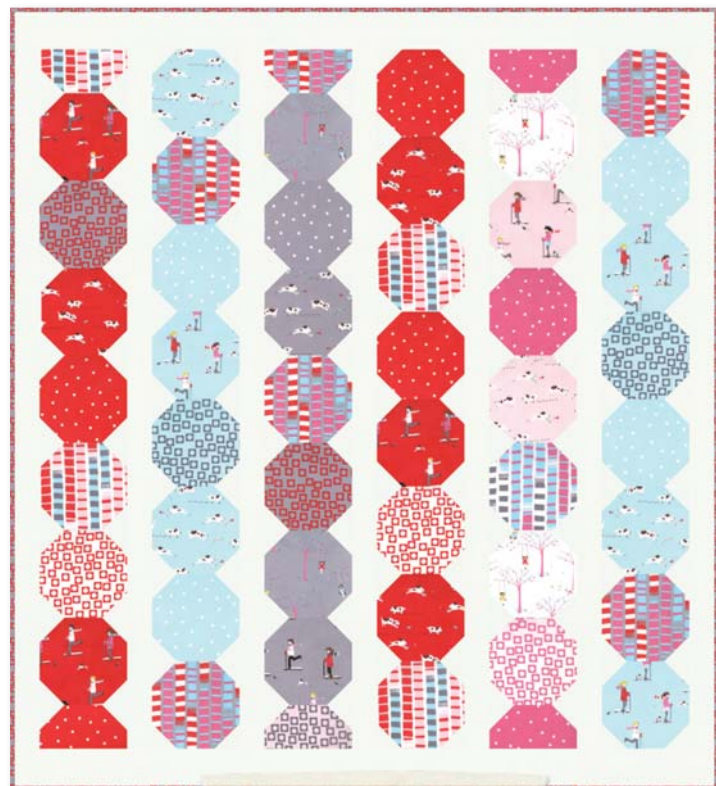
18504 11



18505 14



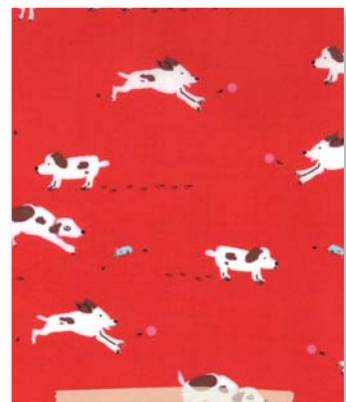
18506 16



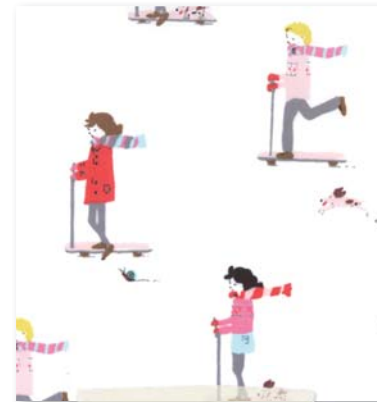
PS#18500 56" x 62"



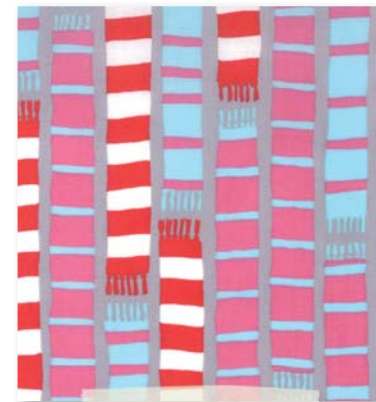
18505 17



18502 14



18501 11



18504 16



18501 15



18505 20



18500 16



Aneela Hoey



Aneela Hoey's fondness for quilting can be traced back to an early appreciation for bits of fabric.

"I'd empty my mum's bags and baskets of scraps, trims, and buttons all over her bed and explore them for hours," she says. "Then I would meticulously put them away. I treated them like precious trinkets."

Though her mother sewed clothing for Aneela and her sisters, school was where Aneela learned most of her stitching skills. "In the United Kingdom we were taught needlework from the age of eight," she says. "We drew diagrams of sewing machines and how to thread them correctly. I was thrilled when I finally got to use a machine for the first time."

School was also where Aneela learned fabric design, ultimately graduating with a degree in printed textiles. About seven years ago, on vacation in Ireland, her love of scraps came full circle. "I was so inspired by quilts I saw in a shop," she says. "When I got home I was hooked on patchwork and the first thing I did was piece a pillow for my daughter. Quilts came later, when I discovered the online craft world."

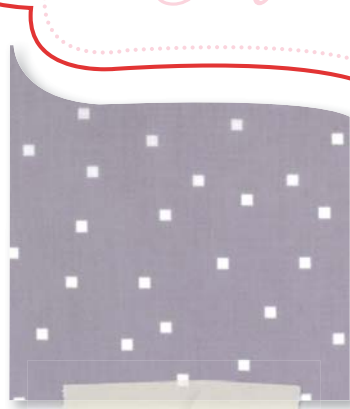
Designing fabric for Moda followed as well, and Sherbet Pips is her first line. Its playful motifs echo the embroidery patterns Aneela creates. Embroidery also is a skill she's passed along to her daughters. "Asha is as crazy about fabric and thread as I am and Ciara becomes completely absorbed when she embroiders," she says. "Both girls take a keen interest in what I am doing."

Sherbet Dips

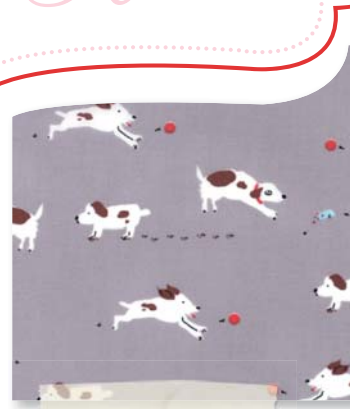
Aneela Hoey



18501 17



18505 19



18502 16



18506 22



18506 21



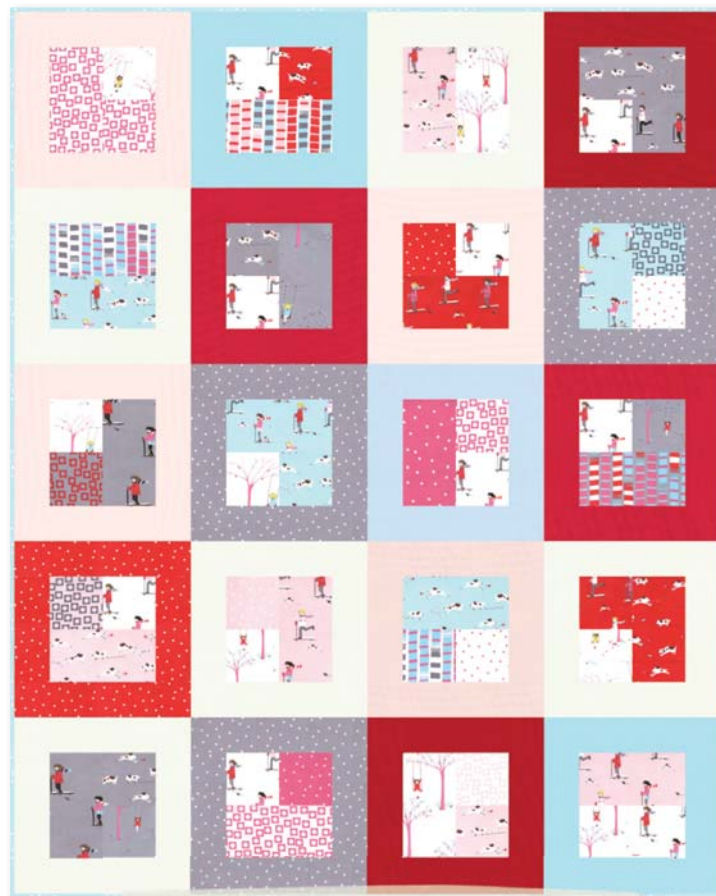
18501 16



18505 18



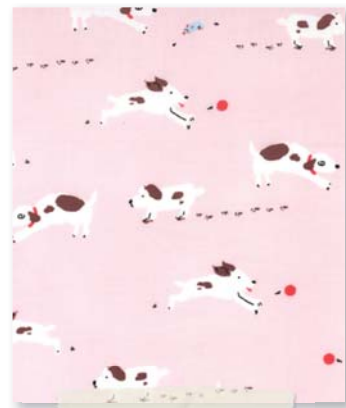
18502 15



Web pattern available comfortstitching.
typepad.co.uk 60" x 75"



18506 18



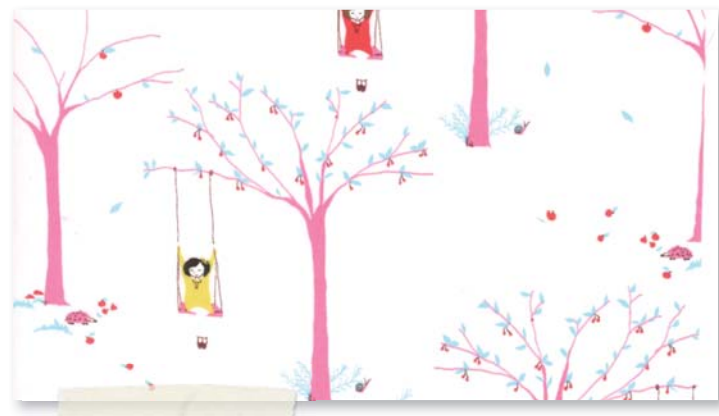
18502 13



18501 13



18505 16



18500 12



18506 11



18504 12



Aneela Hoey

April Delivery

SKUS: 27 PRINTS
CONTENT: 100% COTTON

- ASST. 18500-15 15 YARDS OF EACH
- ASST. 18500-10 10 YARDS OF EACH
- 18500AB BUNDLE: 27 SKUS 18" x 22"
- 18500JR JELLYROLL
(40) 2½" x 45" STRIPS – PK 4
- 18500LC LAYER CAKE
(42) 10" x 10" SQUARES – PK 4
- 18500PP (42) 5" x 5" SQUARES – PK 12
- PS18500 PROJECT SHEET – PK 25