



A Morris Garden

Barbara Brackman

This collection reproduces several of William Morris' own designs, echoing the subtle colors he obtained from natural dyes. Quilters looking for textiles to complement their Arts and Crafts decor will be thrilled by the reproductions' accuracy.

Those unfamiliar with his designs will gain an appreciation of Morris's unparalleled skills in translating nature to cloth.



Stepping Stones Quilt

87" x 87"



William Morris was an extremely influential British designer in the last half of the nineteenth century. He watched in dismay as the Industrial Revolution changed the look and craftsmanship of everyday objects and vowed to return to the days of the hand-made article and design based on nature. His block-printed wallpapers and fabrics were carefully observed florals drawn from his garden. He packed his figures onto the background, creating layers of pattern with complex repeats of intertwining leaves and curving stems that almost defy analysis. His philosophy: "Everywhere a line ends it should look as if it had plenty of capacity for more growth." Morris developed the look that came to define Art Nouveau and the Arts and Crafts Movement. By the time he died in 1896 he had created a design revolution in which the "perfect Morris house" defined the late Victorian age.

Delivery: January, 2008

Order Project Sheet PS8110 – Pk. 25



8114-17



8112-14



8110-27



8111-23

moda

AMORRIS GARDEN

By Barbara Brackman

Page 2 of 7
Black

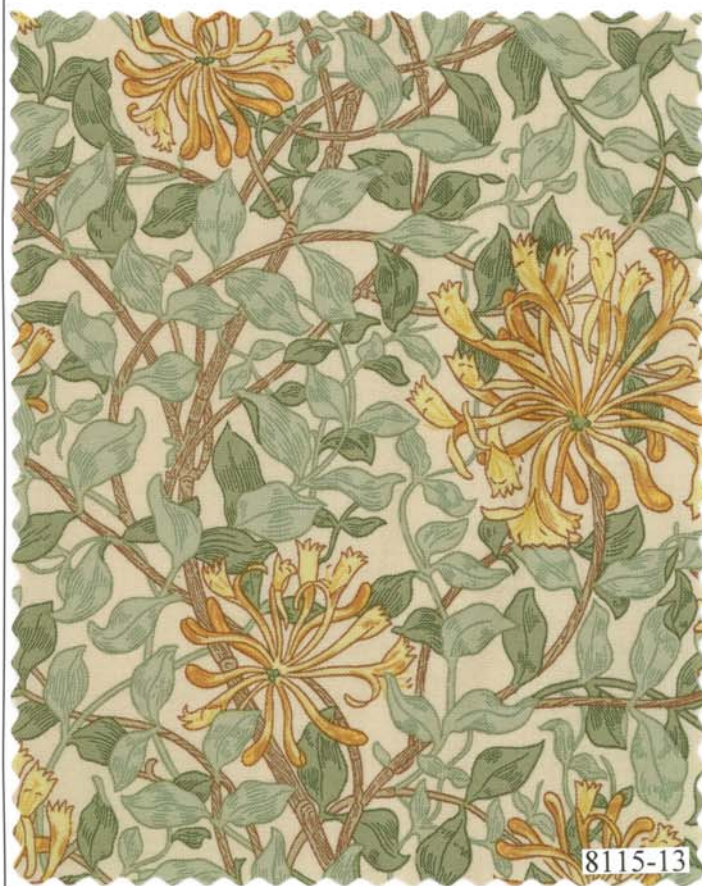
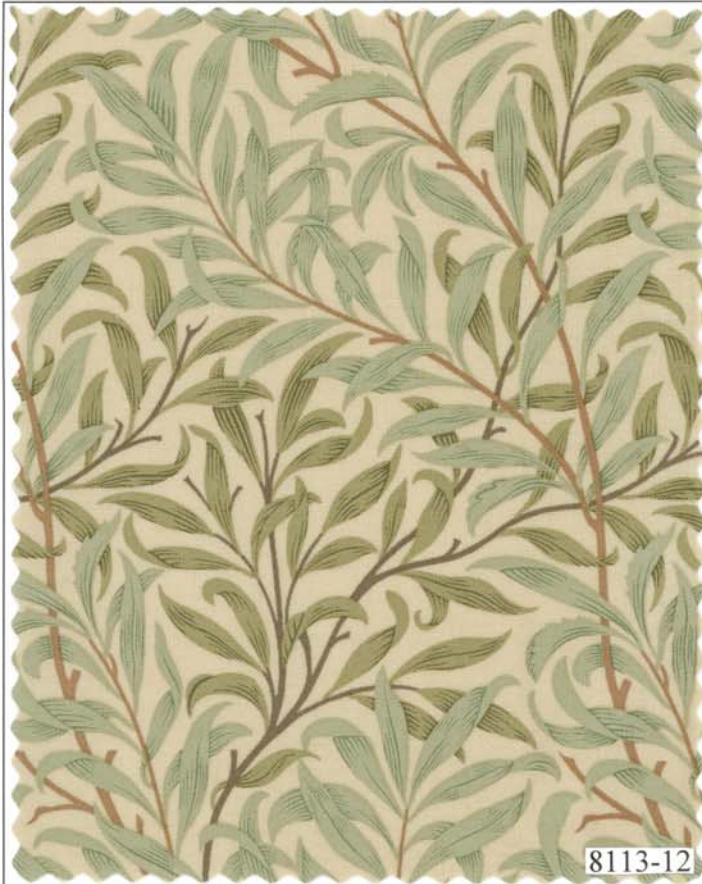


8115-16



8113-15







8114-15



8110-34



8111-25



8111-18

