

BABY JANE Eric & Julie Comstock™

There is nothing sweeter than sewing for a baby, but *Baby Jane* is versatile enough to work in nearly any setting. The traditional 50's red and aqua color pallet gives the set a nostalgic feel with bright yellow adding a happy twist.

These fabrics are hoping to be made into charming quilts for baby and home, pretty purses and diaper bags and even nursery and home decor.



Designed by Julie Comstock

Project Sheet PS37060 — Baby Jane 65"X 68"



37062 21 Aqua



*37061 13 Aqua

Fabrics with * included in low cal assortment



*37065 11 Aqua



*37064 13 Aqua



*37060 13 Aqua

Running yardage — tags are 2½" x 5½"



*37062 23 Aqua Mustard



37060 11 Cream



37063 21 Cream Aqua



37064 11 Cream Scarlet



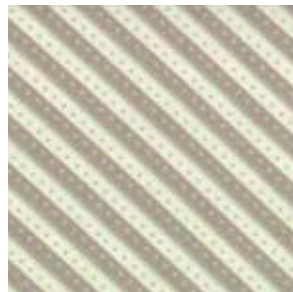
37061 21 Cream Aqua



37064 21 Cream Aqua



37062 24 Mustard Grey



37065 15 Grey



*37063 22 Cream Mustard



*37061 31 Cream Grey



*37064 14 Mustard



37063 15 Grey



*37062 15 Grey

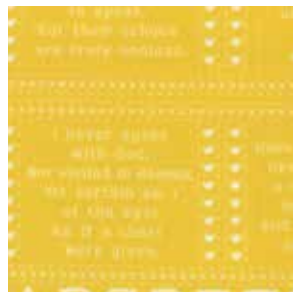


*37064 15 Grey

"G" Patterns ship with Group



37065 12 Mustard



37061 14 Mustard



*37063 11 Cream Scarlet



37061 11 Cream Scarlet



Bella Solids are not included in the Assortments or Precuts.



37062 22 Scarlet



37063 12 Scarlet



*37064 12 Scarlet



*37062 11 Multi



*37061 12 Scarlet



*37065 22 Scarlet



Pattern by Coach House Designs - CHD

CHD 1231 or CHD 1231G - Wash Day 46"X 61"



37060 12 Scarlet

moda

37060

Asst. 15

Asst. 10

Low Cal 15

AB

F8

JR

LC

MC

PP

PS

AB's include one Panel - 37060-13. F8's, JR's, LC's & PP's do not include Panels. JR's, LC's & PP's include two each of 37064, 37065 & 37063-11, 12 & 15.

• 100% Premium Cotton

• 30 Prints

Delivery: June, 2013

BABY JANE Patterns & Yardage

Pattern by Coach House Designs - CHD



Coach House Designs —CHD
Wash Day 46"x61"
 CHD 1231 or CHD 1231G

Yardage		1Q	10 Qs
Eighth Yards (6)		$\frac{1}{8}$	1 $\frac{1}{4}$
37061-14	37063-22	37065-12	9900-34
37062-23	37064-11		
Fourth Yards (7)		$\frac{1}{4}$	2 $\frac{1}{2}$
37061-12	37062-22	37065-11	37065-22
37061-13	37063-21	37065-15	
Half Yards (4)		$\frac{1}{2}$	5
37064-12	37064-13	37064-14	37064-15
Assorted Yardage (3)		1Q	10Qs
37063-12	Border & Blocks	$\frac{7}{8}$	8 $\frac{3}{4}$
37064-21	Background	1 $\frac{1}{8}$	11 $\frac{1}{4}$
9900-123	App & Binding	$\frac{3}{4}$	7 $\frac{1}{2}$

Yardages provided at the time of this printing may change. Please consult the printed pattern before cutting kits.



PS37060 — **Baby Jane 65" X 68"**

moda

Yardage		1Q	10 Qs
37063-12	Border & Blocks	$\frac{7}{8}$	8 $\frac{3}{4}$
37064-21	Background	1 $\frac{1}{8}$	11 $\frac{1}{4}$
37064-21	Background	1 $\frac{1}{8}$	11 $\frac{1}{4}$
37064-21	Background	1 $\frac{1}{8}$	11 $\frac{1}{4}$
37064-21	Background	1 $\frac{1}{8}$	11 $\frac{1}{4}$
37064-21	Background	1 $\frac{1}{8}$	11 $\frac{1}{4}$
37064-21	Background	1 $\frac{1}{8}$	11 $\frac{1}{4}$
9900-123	App & Binding	$\frac{3}{4}$	7 $\frac{1}{2}$

Stay Connected!    

MODA WINTER 2013 FABRIC COLLECTIONS