

# HARTFIELD *collection*

*Bonnie Brackman*

Quilt - 70" x 70"



*Jane Austen pieced a quilt with her sister and mother about 1811. The medallion or "frame quilt," as the British call them, can be seen at Jane Austen House, the museum at Chawton in Hampshire, England. The quilt is composed of diamonds and features a chintz basket in the center.*

*Between writing and playing the piano Jane often made time for sewing. Her niece Anna remembered telling Aunt Jane about the latest novels "much to her amusement, as she sat over some needlework which was nearly always for the poor."*

*The HARTFIELD FRAME QUILT echoes the shades in Jane's quilt in different format. It recalls the English taste of the early 19th century when soft colors defined patchwork coverlets. Pieced and plain borders frame a simple star, ending with a floral border, a particularly British touch.*

*moda*



Web Pattern - available when collection ships

Fans of Jane Austen's novels will recognize *Hartfield* as the home of Emma Woodhouse, the matchmaking heroine of *Emma*. Barbara Brackman's new HARTFIELD collection reproduces early prints from the years when Jane Austen flourished. Each print is named for an English estate featured in her novels such as *Emma*, *Pride and Prejudice* and *Mansfield Park*.

PEMBERLEY - Late 18th Century  
ALLENHAM COURT - Early 19th Century  
NETHERFIELD PARK - Early 19th Century  
DONSWELL ABBEY - Early 19th Century

MERTON - Late 18th Century  
LONGBOURNE - Early 19th Century  
MANSFIELD PARK - Late 18th Century  
LUCAS LODGE - Early 19th Century

Colorways echoing the natural dyes of the time are named for the novel's beloved characters - *Lizzie's Rose Pink*, *Marianne's Plum*, *Darcy's Biscuit Tan*, *Emma's Hedge Green* and *Knightley's Umber Brown*. The Regency-era reproductions evoke the early 19th century, when fashionable cotton prints were called muslins and the Bennet girls could only be distracted from eyeing the handsome soldiers by "a really new muslin in a shop window."

The prints range from the small florals that the Austen characters called sprigged or spotted muslins to a chintz-scale fabric perfect for an English drawing room. All the prints have been drawn from period cottons, the kind Emma and her friend Harriet purchased at the dry goods counter at Ford's shop, where they tried to decide between plain or figured muslins.

"La! if you have not got your spotted muslin on."

*Mrs. Steele to Eliza in "Sense and Sensibility"*



Delivery: January, 2009

 *fabrics for* **HARTFIELD** *frame quilt*



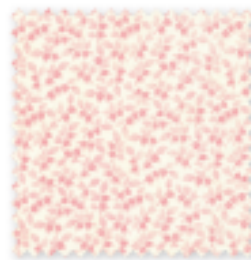
8138 12 LIZZIE'S ROSE PINK  
HARTFIELD SOLID



8138 21 EMMA'S HEDGE GREEN  
HARTFIELD SOLID



8138 19 MARIANNE'S PLUM  
HARTFIELD SOLID



8137 11 LIZZIE'S ROSE PINK  
LUCAS LODGE



8137 12 EMMA'S HEDGE GREEN  
LUCAS LODGE



8137 15 MARIANNE'S PLUM  
LUCAS LODGE



8135 11 LIZZIE'S ROSE PINK  
MANFIELD PARK



8134 13 IVORY  
NETHERFIELD PARK



8134 14 KNIGHTLY'S UMBER  
NETHERFIELD PARK



8131 11 LIZZIE'S ROSE PINK  
MERTON



8131 13 UMBER BROWN  
MERTON



8133 15 MARIANNE'S PLUM  
LONGBOURNE



8130 12 EMMA'S HEDGE GREEN  
PEMBERLEY



8130 14 KNIGHTLY'S UMBER  
PEMBERLEY

*moda*  
MODAFABRICS.COM

moda

Page 1 of 6  
Lizzie's Rose Pink  
Darcy's Biscuit Tan

HARTFIELD

Barbara Brackman

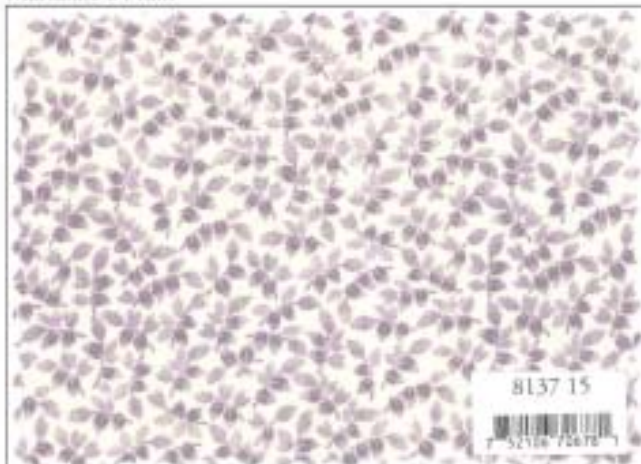


8130 11

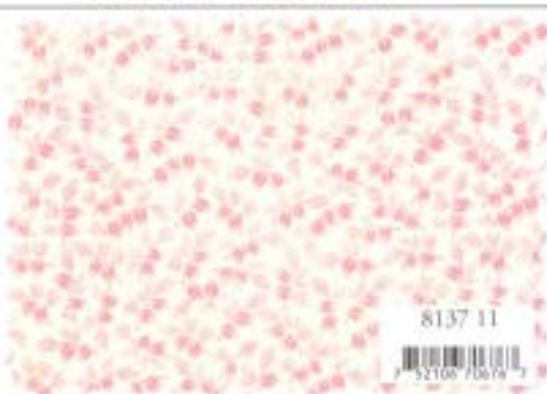


8132 13





HARTFIELD  
*Barbara Brackman*





8130 12  




8138 21  




8135 12  

