


**lately arrived
 from london**
by barbara brackman



8192 23



8190 25

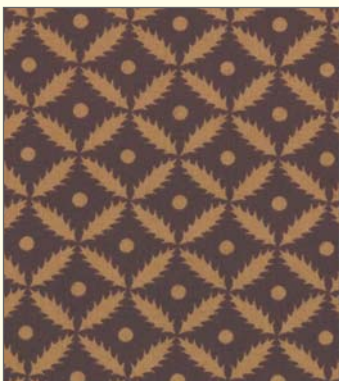


PS8190

Project Sheet by Barbara Brackman, 86" x 86"



8197 17



8191 25



8195 14



8196 14



8196 13



8192 20



8190 18



8190 21



8193 13



8194 19



8195 12

“Lately Arrived from London” will delight fans of early calicoes and chintzes. The collection recreates fabrics from the turn of the 19th century when Americans imported their cottons. Traders brought the world’s luxury goods to wharves in Philadelphia, Boston and New York. Each piece is named for a trading ship that sailed into American harbors---the Charming Betsy, the Brigantine Sally, the Ship Surprise.

The reproductions are copied from Dutch, Indian, French and British document prints, the type advertised in 1771 by John Hunt of New York. “Fine sprig’d muslins for gowns, fine border’d India and other chintzes; ... furniture calicoes.”

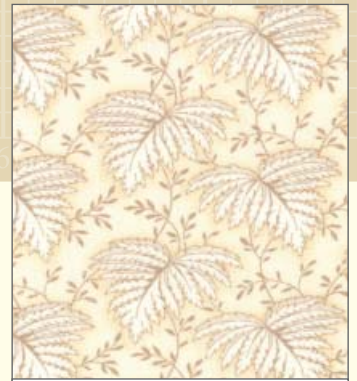
Colorways echo natural dyes with colors named for the styles of the times: China blue, India red, Pompadour purple, Nankeen tan and Muslin white. The prints range from a neat geometric and leafy sprigs suitable for a lady’s dress to “furniture calicoes,” the chintz-scale florals. The furniture calicoes include a pillar print perfect for an 18th-century bed hanging or a 21st-century quilt border.



8195 11



8191 11



8192 11



8196 11



8197 13



“The Cream of all Sorts of the best Goods, just Imported in the very last Ship from London.”

Boston Gazette, 1743



8193 11



8190 14



8194 22



8192 21



8190 16



8191 18



8193 12



8197 14



8194 17



8196 12

lately arrived from london

by barbara brackman

- ASST. 8190-15 15 YARDS OF EACH
- ASST. 8190-12 12 YARDS OF EACH
- ASST. 8190-9 9 YARDS OF EACH
- 8190AB BUNDLE: 28 SKUS 18" X 22"
- 8190JR JELLYROLL:
 - (40) 2 1/2" X 45" STRIPS- PK 4
- 8190LC LAYER CAKE:
 - (42) 10" X 10" SQUARES- PK 4
- 8190PP (42) 5"X5" SQUARES - PK 12
- PS8190 PROJECT SHEETS, PK. 25

JR'S, LC'S & PP'S INCLUDE TWO
EACH OF 8190, 8192 & 8195.

SKUS: **28** PRINTS

CONTENT: 100% COTTON

DELIVERY
SHEPHERD