

METROPOLITAN FAIR

Barbara Brackman



Quilt made by Lorinda Wade

Metropolitan Fair recalls the Civil War ladies' fairs that raised millions of dollars for Union and Confederate soldiers' hospitals. The largest extravaganza was New York City's Metropolitan Fair held in Union Square in 1864. Women from the Carolinas to California orchestrated fundraisers to sell needlework and handmade items at tables staffed by volunteer sales clerks permitted to be quite flirtatious for the cause. The prints in Metropolitan Fair recall calicoes and dress goods of the war years. Each print is named for an exhibit. The collection is a stroll through exhibit halls from the Knickerbocker Kitchen that celebrated New York's Dutch past to the Old Curiosity Shop.

Metropolitan Fair — #PS8230 Finished Quilt Measures 76" x 76"

8232 12
Tart Pink



8230 12
Tart Pink



8234 12
Tart Pink



8235 12
Tart Pink



moda



*8230 16
Pie Red



*8236 12
Pie Red



8235 11
Salad Green



*8231 11
Salad Green



*8230 14
Shell Gray



*8237 15
Shell Gray



8232 13
Shell Gray



8236 14
Shell Gray



8234 16
Pie Red



*8232 16
Pie Red



*8233 14
Pie Red



*8232 17
Salad Green



8234 11
Salad Green



*8233 11
Salad Green



8230 11
Salad Green

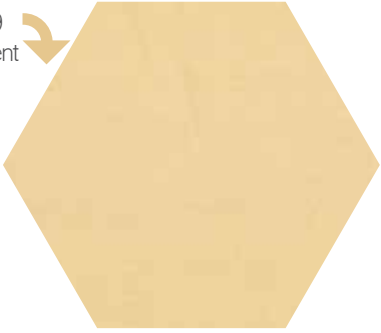


8236 11
Salad Green

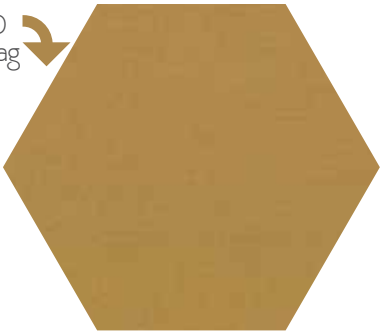


BELLA Solids

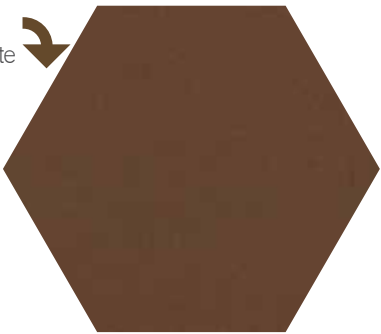
9900 39
Parchment



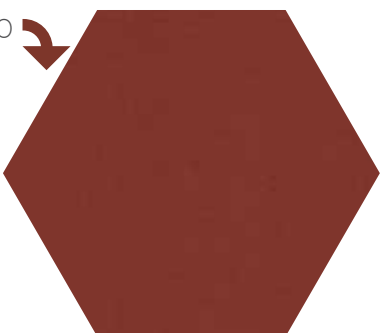
9900 40
Paper Bag



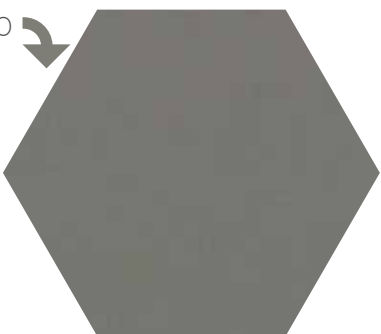
9900 41
Chocolate



9900 150
Kansas
Red



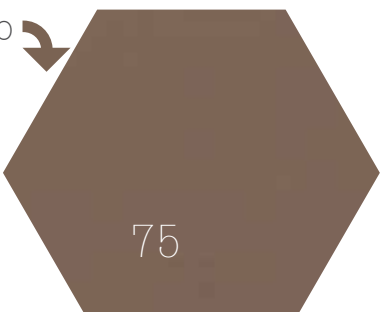
9900 170
Etchings
Slate



9900 174
American
Blue



9900 180
Coco



*8235 15
Shell Gray



8233 18
Shell Gray



*8234 14
Shell Gray



*8232 22
Chocolate



*8230 15
Meringue Tan



8232 15
Meringue Tan



8235 17
Meringue Tan



*8236 15
Meringue Tan



*8231 17
Chocolate



8230 13
Chocolate



8234 13
Chocolate



8233 16
Chocolate



8237 21
Chocolate



moda

108" Quilt Backs

11076 14
Pie Red



11076 16
Chocolat



11076 18
Gray



11076 22
Blue



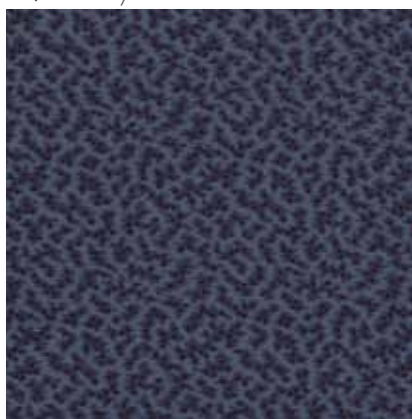
8233 22
Berry Blue



*8236 18
Berry Blue



8237 22
Berry Blue



*8234 18
Berry Blue



*8235 13
Chocolate



*8231 20
Berry Blue



*8232 18
Berry Blue

October Delivery

SKUS: 40 PRINTS, 4 QUILT BACKS
CONTENT: 100% COTTON

PRINTS:

ASST. 8230-15 15 YARDS OF EACH
ASST. 8230-12 12 YARDS OF EACH
ASST. 8230-10 10 YARDS OF EACH
ASST. 8230-10H 10 YARDS OF 20 SKUS*
8230AB BUNDLE: 40 SKUS 18"X22"
8230F8 BUNDLE: 40 SKUS 9"X22"
8230JR JELLYROLL - (40) 2½"X45" STRIPS - PK 4
8230LC LAYER CAKE - (42) 10"X10" SQUARES - PK 4
8230PP (42) 5"X5" SQUARES - PK 12
8230MC (42) 2½" SQUARES - MULTIPLE 24
PS8230 PROJECT SHEET - PK 25

*Bella Solids are not included in Precuts or Assortments.

Barbara Brackman

METROPOLITAN FAIR