

completed blocks

quilt are two-thirds of a full block and will measure only 9" x 18"

A one-third size block diagram is shown indicating the color arrangement and method of piecing. The letters stand for the colors: L-light green, M-medium green, D-dark green. The accompanying numbers (1, 2, 3, and 4) indicate the pattern parts used.



modafabrics.com

moda

October Delivery

### YARDAGE CHART

(Material 45" wide)

Dark Green	36 yards
Part 1	216 pieces*
Part 2	76 pieces
Part 3	4 pieces
Part 4	56 pieces
Medium Green	
Part 1	
Part 2	
Part 3	
Part 4	
Light Green	
Part 1	
Part 2	
Part 3	
Part 4	

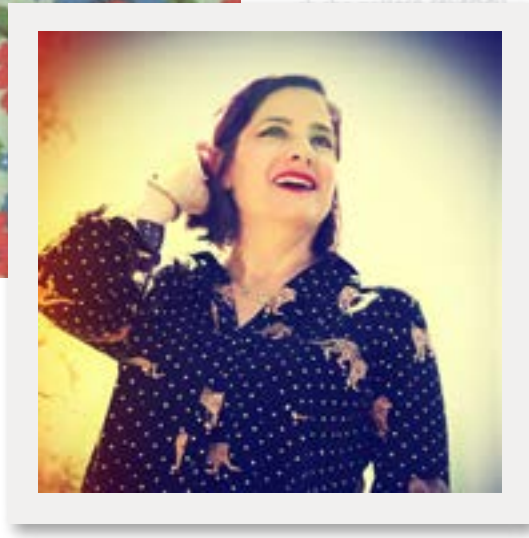
# Purebred

erin michael

"I love to approach my work, and my life, as a storyteller. To me any subject that has been craftily edited can take a viewer to a new place -even if it's just for a split second. What a trip to do that for a living!" Erin Michael.

Erin Michael is always on the hunt for new experiences and adventures, whether it's by traveling abroad, trying new hobbies, reading books or exploring East Dallas on her Vespa scooter. Curiosity mixed with pop culture and nostalgia is what drives her aesthetic.

Erin lives in Dallas, TX with her 8yr old son Finn, one dog named Detters, one female cat named Arnold (guess who named him) and at last count 2.5 million Lego bricks. Being a single parent, Erin's life as an entrepreneurial mother is a work-in-progress. Erin drinks espresso every morning, and harbors a deep secret to be a sultry jazz singer from the 30's but knows she is entirely too goofy to pull it off.

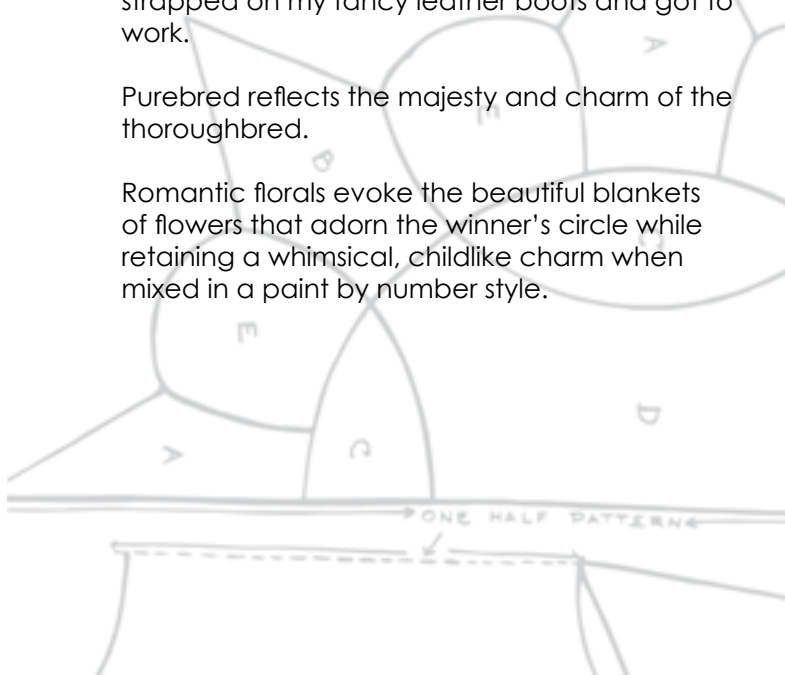


## INSPIRED

This being my third collection I felt drawn to the year of the horse and what could be more apropos than the Triple Crown. With the summer excitement of California Chrome's run, I strapped on my fancy leather boots and got to work.

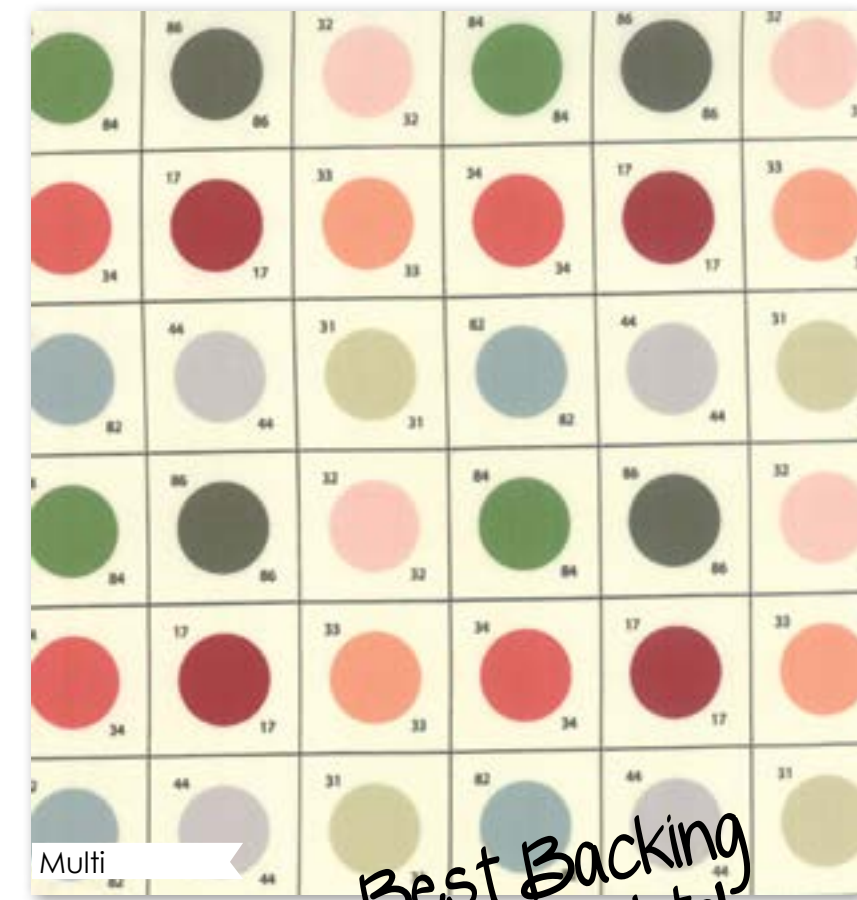
Purebred reflects the majesty and charm of the thoroughbred.

Romantic florals evoke the beautiful blankets of flowers that adorn the winner's circle while retaining a whimsical, childlike charm when mixed in a paint by number style.



Multi

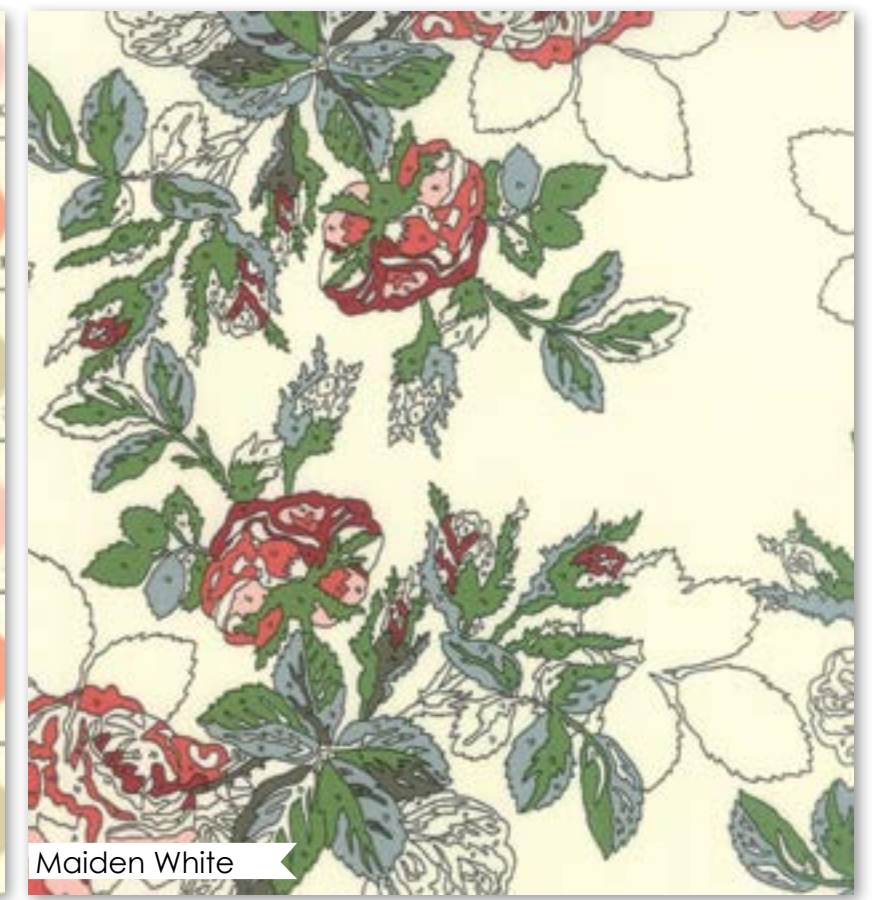
26090 11



Multi

26095 11

Best Backing Ever! Right?!



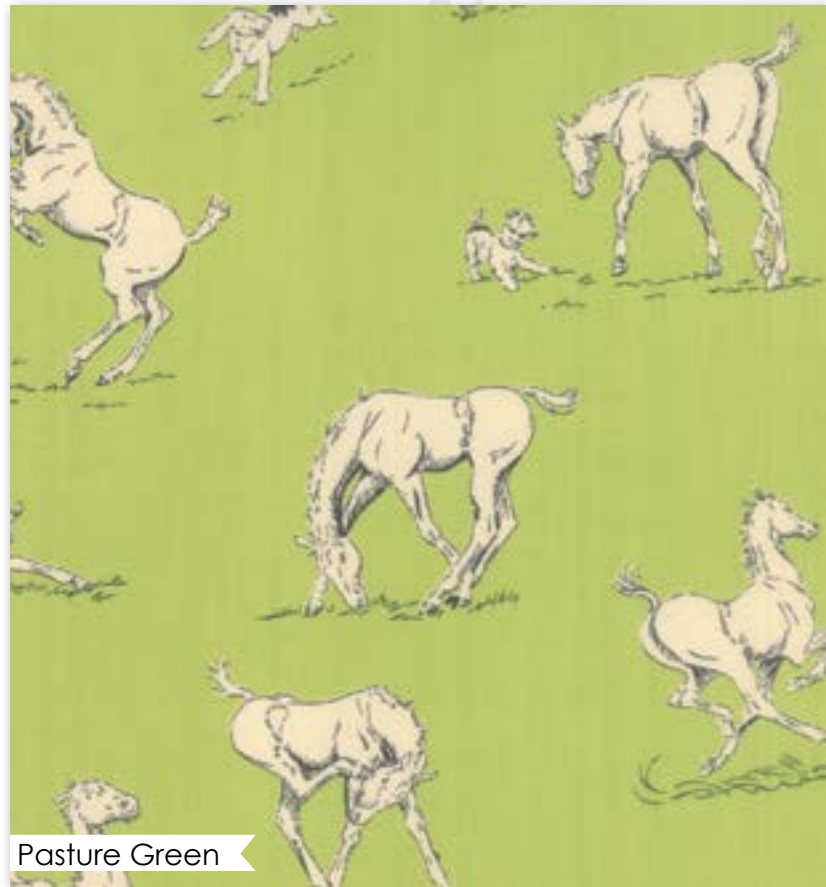
Maiden White

26093 13

A fabric collection for the artist in you.

# 108





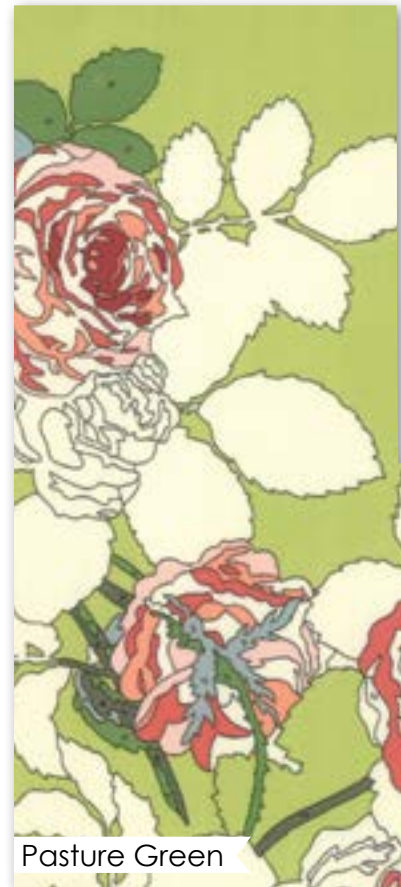
Pasture Green

26091 14



Pasture Green

26092 14



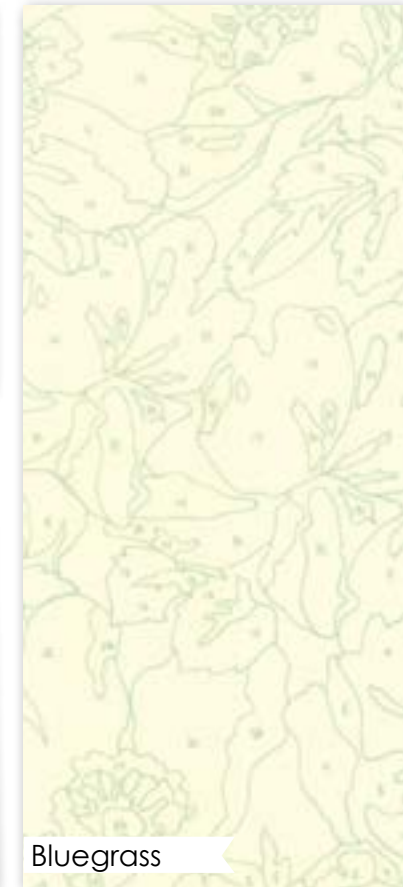
Pasture Green

26093 17



Pasture Green

26094 15



Bluegrass

26092 15



Bluegrass

26096 15



Bluegrass

26094 16



Pasture Green

26095 15



Pasture Green

26096 14



80069 3 in 1 Betsey Bag by C & T Publishing

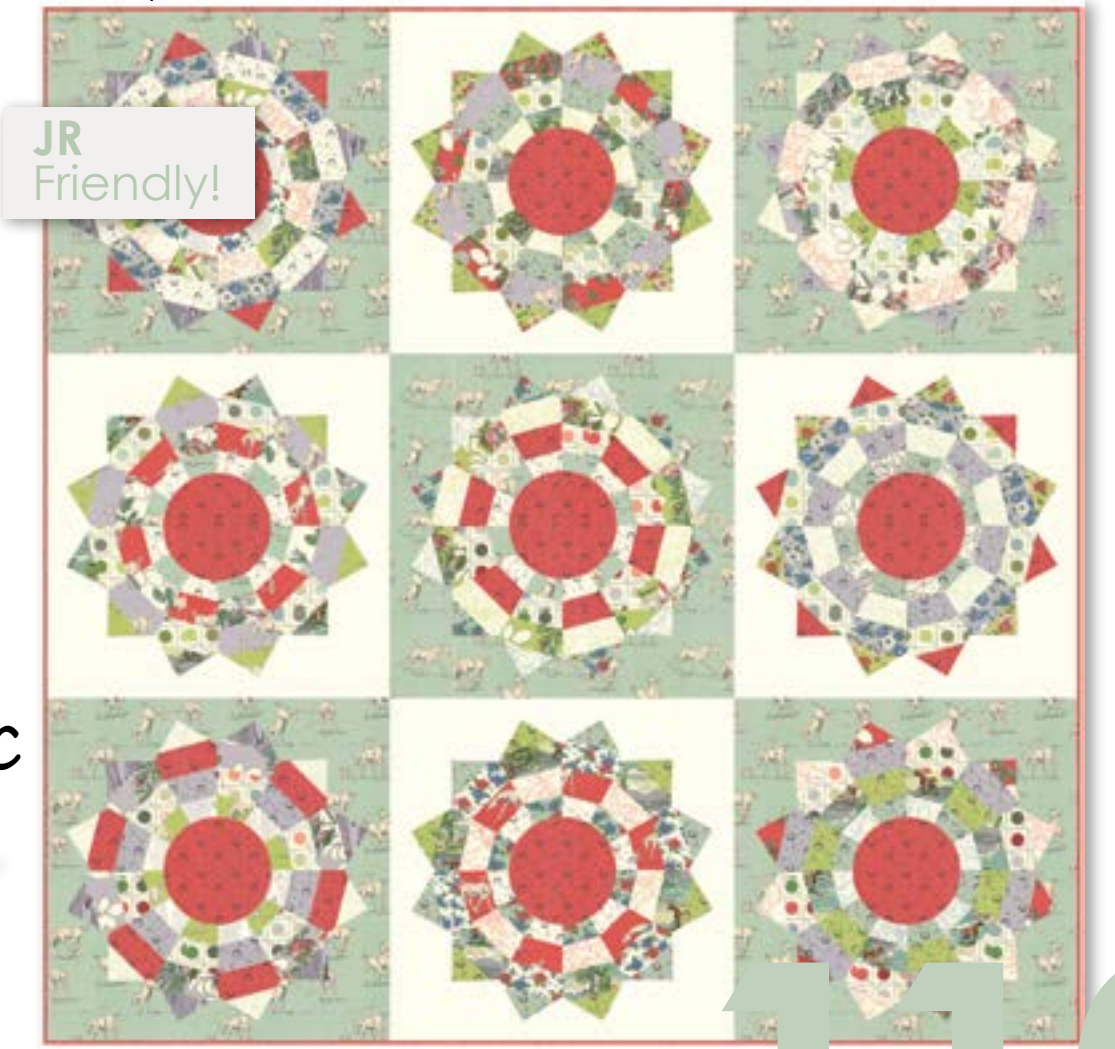


Bluegrass

26091 15

TB 186 / TB 186G Picadilly Circus Size: 75" x 75"

pattern by Thimbleblossoms



JR Friendly!

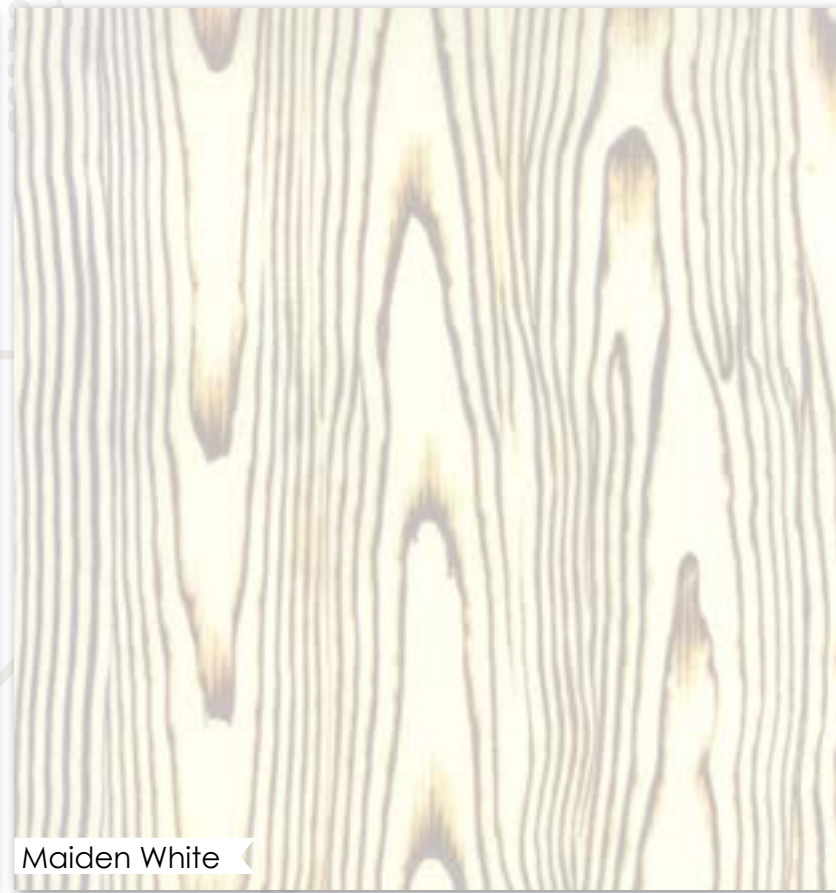
Purebred fabric + Versatile Tote STYLIN'! (yes, please!)





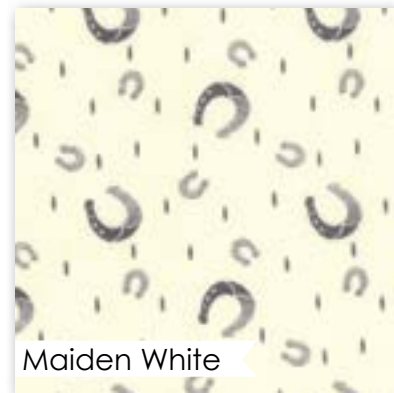
Black

26092 11



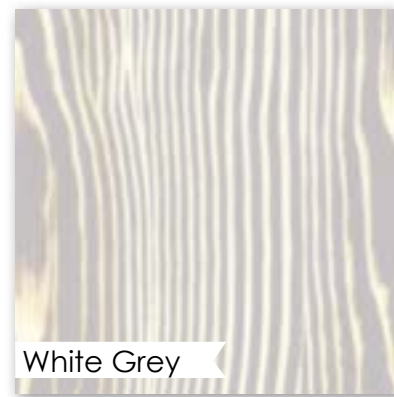
Maiden White

26051 53



Maiden White

26096 12



White Grey

26051 51



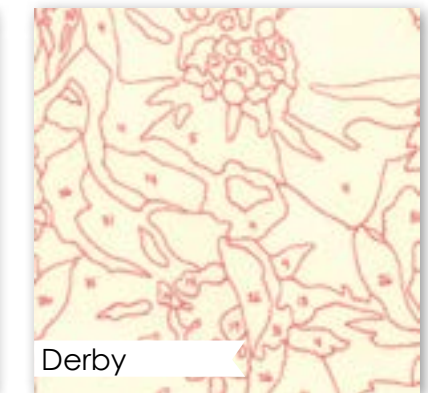
Derby

26091 16



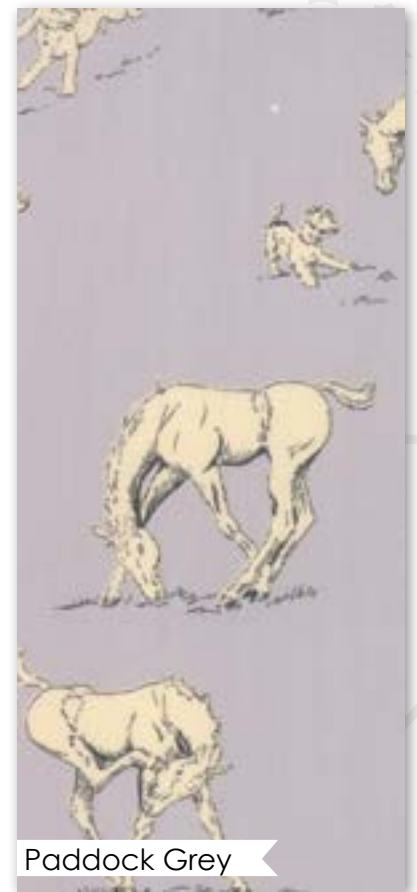
Derby

26096 16



Derby

26092 16



Paddock Grey

26091 11



Paddock Grey

26093 11



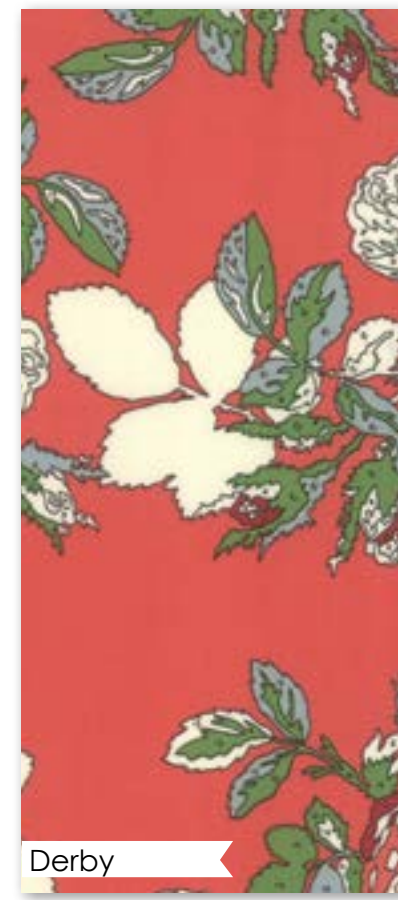
Paddock Grey

26094 11



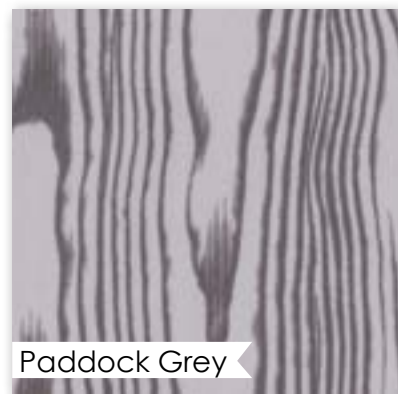
Paddock Grey

26096 11



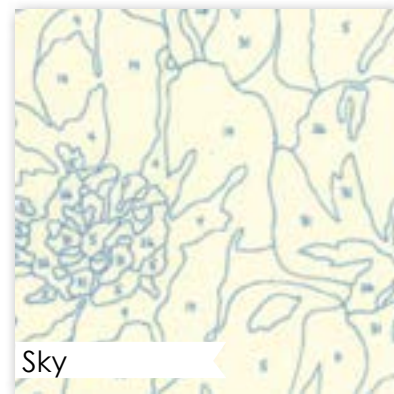
Derby

26093 21



Paddock Grey

26051 52



Sky

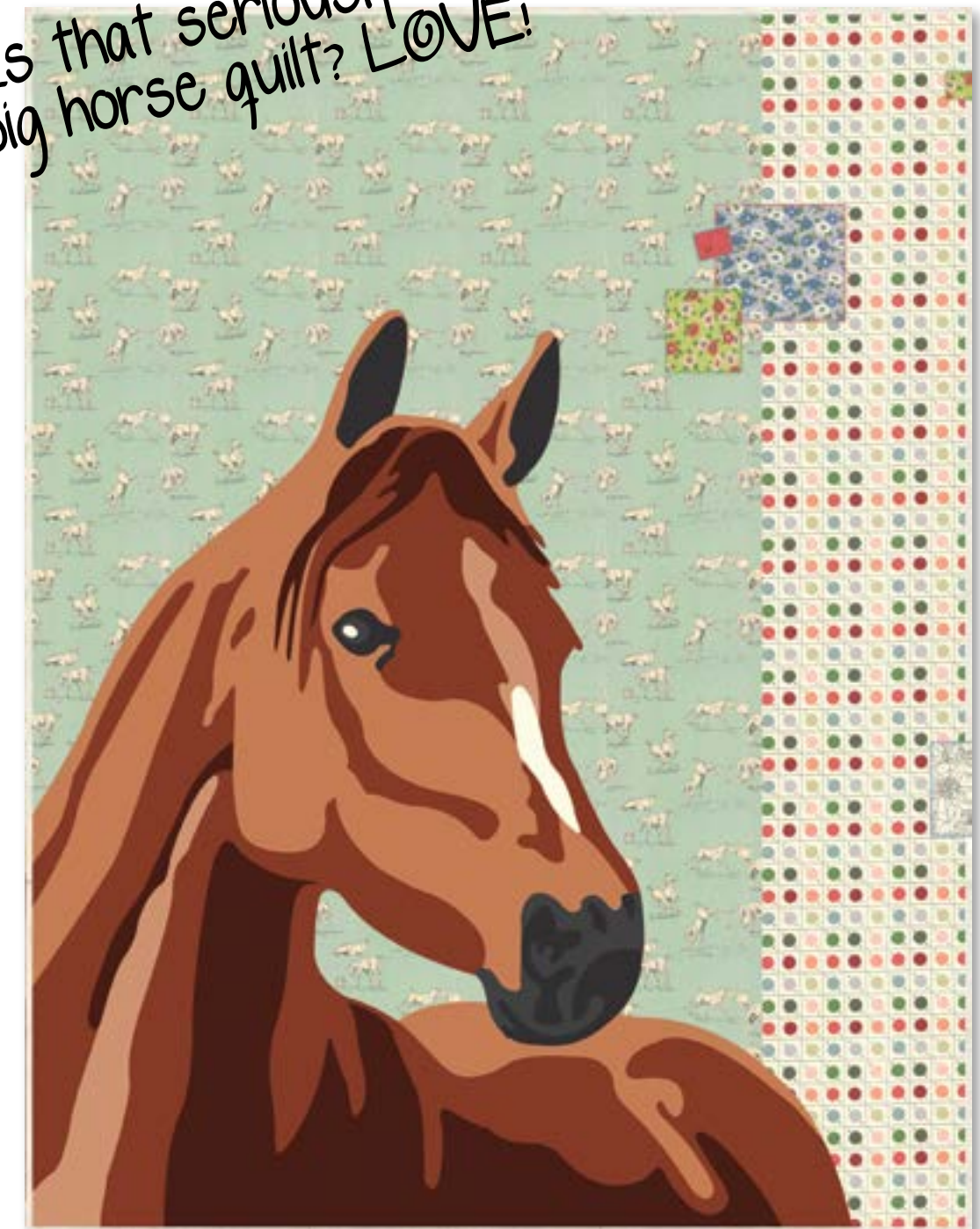
26092 20



Maiden White

26094 13

Is that seriously a big horse quilt? LOVE!



KIT26090  
Wilbur Size: 78 x 63"

11

Make it Fun!

26090

Asst. 15

Asst. 10

AB

JR

LC

MC

PP

KIT

• 100% Premium Cotton • 28 Prints

JR's, LC's, MC's & PP's include two each of 26090, 26095, 26096 & 26092-11, 14, 15, & 16.

Delivery: October, 2015