

SUGAR POP!

LIZ SCOTT

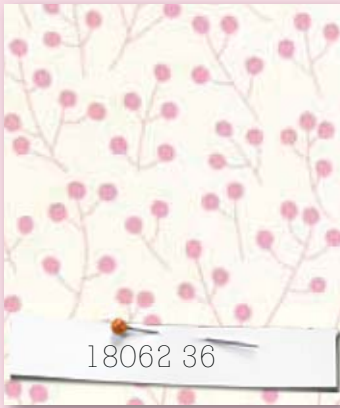
Liz's debut line for Moda is popping with color and as sweet as sugar!

Sugar Pop stems from Liz's love for all things confectionery, with vibrant, clear colors inspired by the rich treats of the ice cream parlor and candy store as well as a sprinkling of deeper, sophisticated color tones. The bold, punchy florals and mod nature motifs are accented with dots and other geos in a variety of scales and composition. It's a perfect recipe for yummy projects, from crafting and quilting to home decor, apparel, accessories and more.

Visit paperpie.typepad.com for a daily dose of sweetness and to see what Liz is creating with her fabrics!

7





18062 36



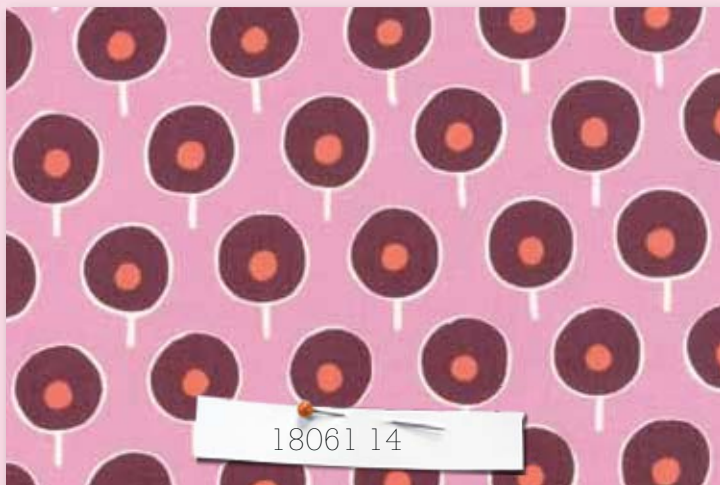
18062 23



18067 17



PS18060 Quilt by Liz Scott, Quilt Measures 55" x 65"



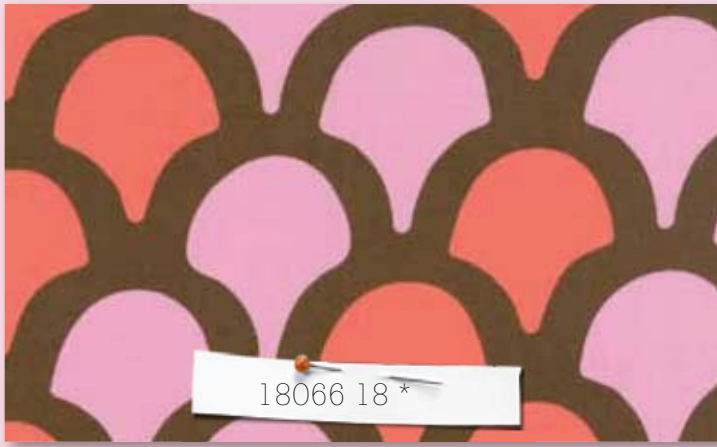
18061 14



18064 14



18068 19 *



18066 18 *



18061 18 *



18063 19



18062 11 *



18061 11 *



18060 11 *



18067 19 *



18065 11



18066 16



18064 22



18068 18 *



18062 33



18060 19 *



18068 17



18063 18 *



18065 20 *



18062 18



18060 18 *



18064 19 *



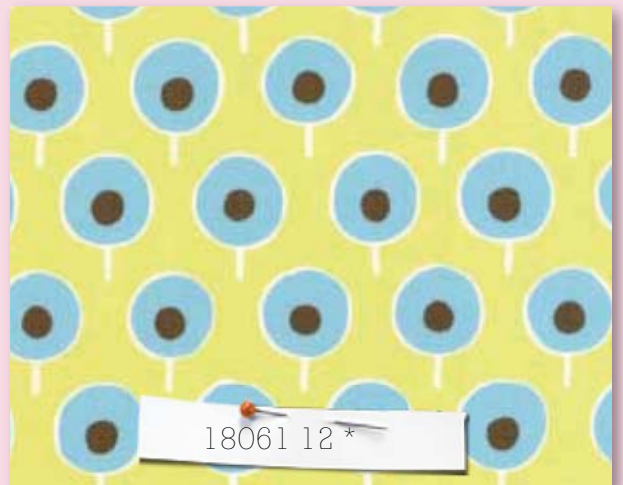
18063 20



18060 12



18062 20 *



18061 12 *



18064 12 *



18067 20

moda

Visit Liz Scott's blog @ paperpie.typepad.com

ORDER ONLINE 24 HOURS A DAY AT WWW.MODAFABRICS.COM



18060 13



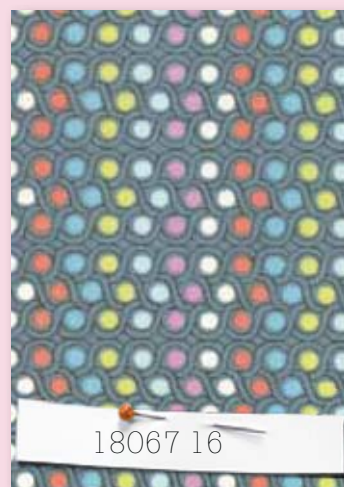
18066 12 *



18067 12



18065 13 *



18067 16

SUGAR POP!

December 2010

- Skus:40
- 44"-45" 100% Cotton
- Asst. 18060-15 15 Yards of Each
- Asst. 18060-10 10 Yards of Each
- Asst. 18060-10H *10 Yards of 20 Skus
- PS18060 Project Sheet
- 18060AB Bundle: 40 Skus
- 18060F8 Bundle: 40Skus
- 18060JR Jellyroll: (40) 2 1/2" x 45" Strips - multiples of 4
- 18060PP (42) 5"x5" Squares - multiples of 12.
- 18060LC Layer Cake - (42) 10"x10" Squares - multiples of 4.



moda
Sugar Pop!
by liz scott

Finished Size: 55¼"x65½"

Finished Size: 55¼"x65½"

Sugar POP!

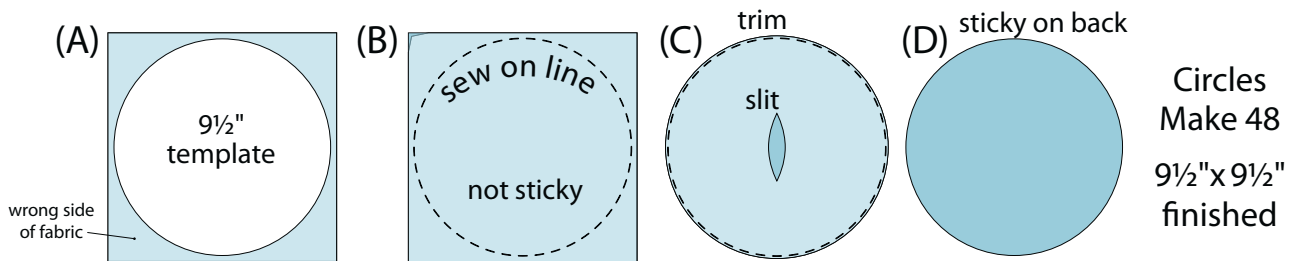
by liz scott

Quilter Basics

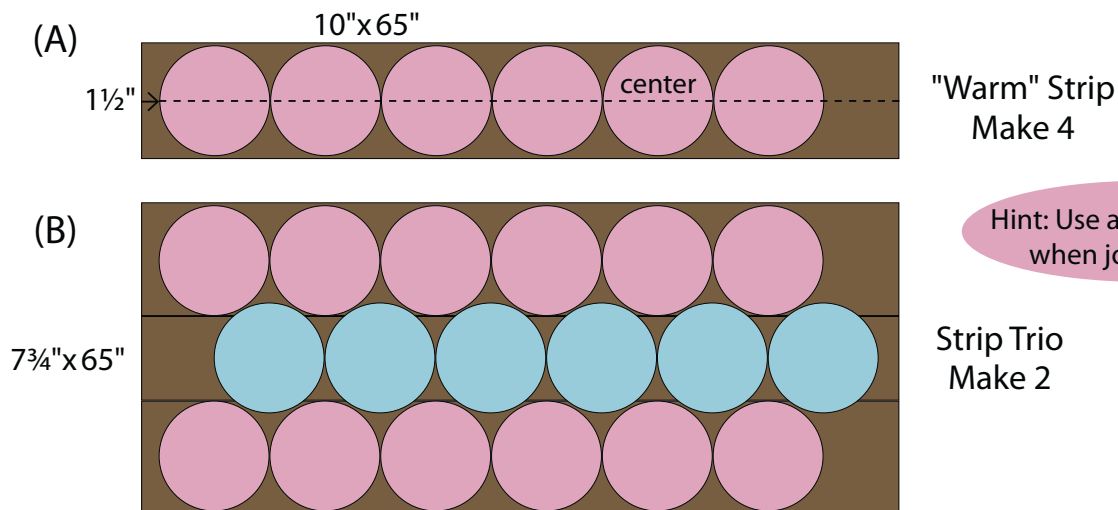
Read instructions before beginning a project.
All instructions include a ¼" seam allowance.
22" measurement is approximate.
WOF—approximately 40".

Quilt Construction

- 1** **Circles:** Make a 9½" Circle template. (A) Draw a circle on wrong side of the 48-10" squares. (B) Position the fusible square, *sticky side down*, on the *right side* of a 10" fabric square do not press, stitch in place. (C) Trim a scant ¼" from the stitched line, slit the web, turn the circle right side out. (D) **Finger press the edges, do not iron!** Repeat to make 48 circles.



- 2** **Quilt Top:** The quilt top is arranged in rows of "warm" fabric Circles and "cool" fabric Circles.
- (A) Set aside 1–10"x65" strip. Press the remaining 4–10"x65" Background strips in half lengthwise (*use line as a placement guide*). Starting 1½" from the end of 1–10"x65" strip, center six "warm" Circles on the strip – *be sure to leave room for seam allowance to join strips*. Press in place, activating the fusible web. Repeat to make a total of 4 Warm Strips. Appliqué the Circles in place.**
- (B) Sew 1–7¾"x65" Background strip between 2 "warm" Circle strips. Arrange and press 6 "cool" Circles on the strip. *See diagram*. Repeat.

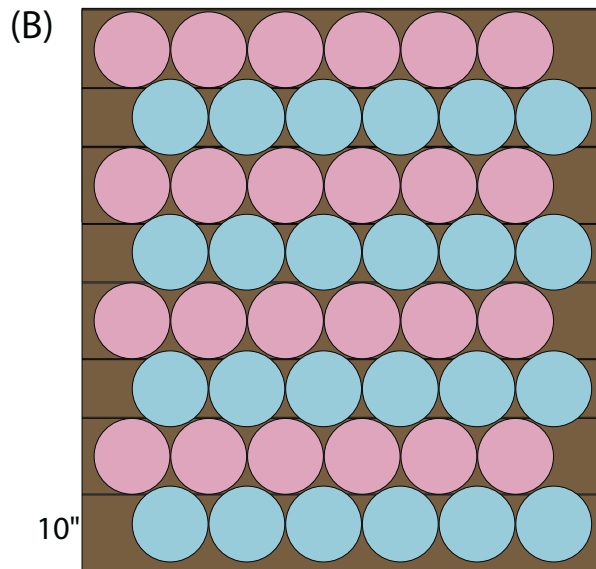
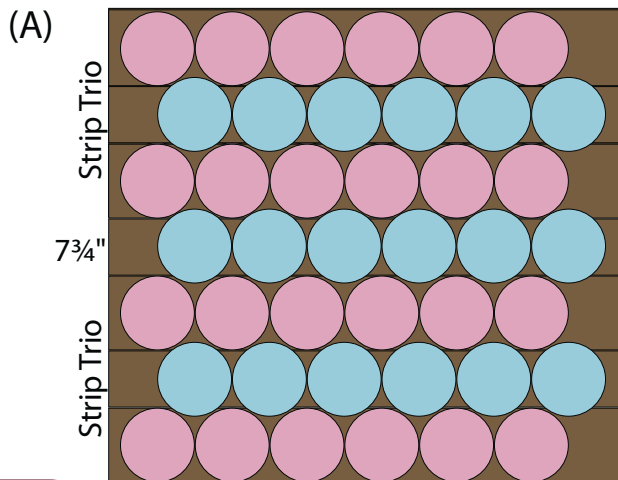


Hint: Use a scant ¼" seam when joining strips

****Appliqué the Circles:** You may appliqué the Circles as you complete each section or when the quilt top is done. Prepare your sewing machine for appliquéing by using invisible nylon in the top and cotton thread in the bobbin that matches the background fabric. Set your machine to sew a small ⅛" zigzag stitch. Position the needle on the edge of the circle, so that most of the stitch is on the circle, just the width of the needle on the background.

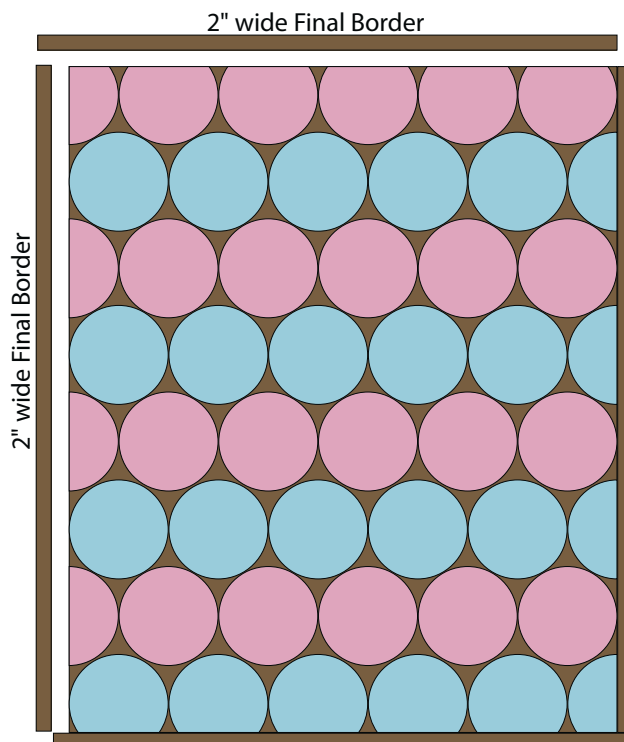
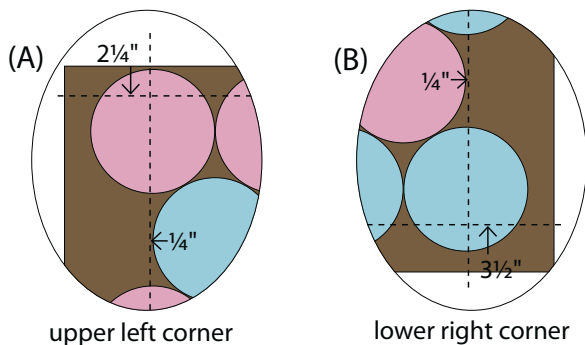
3 **Quilt Top (continued):** (A) Sew 1-7 $\frac{3}{4}$ "x65" Background strip between 2 Strip Trios. Arrange and press 6 "cool" Circles on the strip. *See diagram.*

(B) Sew the remaining 1-10"x65" Background strip to the bottom. Arrange and press 6 "cool" Circles on the strip. *See diagram.* Finish appliquéing the Circles to the quilt top.



4 (A) Trim left side of the quilt top $\frac{1}{4}$ " from the "cool" rows. Trim $2\frac{1}{4}$ " from the top.

(B) Trim right side of the quilt top $\frac{1}{4}$ " from the "warm" rows. Trim $3\frac{1}{2}$ " from the bottom. Add the 2" wide Final Borders to the sides first then top and bottom. *Measure across the center of the top for the best length for the borders.*



5 Using a bias seam, join the 7- 2 $\frac{1}{2}$ "x WOF binding strips end to end. Press seams open. Fold prepared strip in half wrong sides together and press to make the binding. Layer, quilt and bind the quilt. ENJOY!

Fabric Requirements

Circles: 1 Layer Cake™ (18060LC)

plus 4 Fat Quarters
(18061-14, 18062-23, 18064-12, 18067-19)

Background, Final Border, Binding:

4¼ yards (18062-18)

Backing – 3½ yards

Also needed:

Lightweight fusible web– 7½ yards

(We suggest Pellon Fusible Interfacing 931TD
or Pellon Ek130 Easy-Knit)

Template Plastic

Sugar POP! by liz scott

Size: 55¼" x 65½"

Circle template

9½" circle

½ of the template

Trace and Stitch on outside line

Cutting

Circles:

from EACH of 4 fabrics cut
1–10"x22" strip
subcut 2–10"x10" squares

Fusible Web:

Cut 48–10"x10" squares

Background, Final Border, Binding:

First cut:

7–2½" x WOF strips for binding

Then cut remaining fabric into

2–WOF x 65" strips

Subcut or clip and tear

5–10" x 65" strips

3–7¾" x 65" strips

4–2" x 65" strips (border)

16

moda

MODAFABRICS.COM

PS18060

