



Size: 67" x 89½"

*moda*

**Revival**  
featured fabric: 1974 **UrbanChiks**

# 1974 Revival

UrbanChiks

Size: 67" x 89½"

Quilter Basics

Read instructions before beginning a project.  
All instructions include a ¼" seam allowance.  
Press as you go. Press seams in one direction.

## Construction

Trapezoids give this quilt its intricate look. Start with rectangles and easily trim them to make the trapezoids. The quilt is then assembled in columns for easy piecing.

### Cutting:

#### MAIN BLOCK

Assorted darks:

from EACH of the 15 prints:

Cut 1-3⅜" x WOF strip

Subcut 1-3⅜" x 3⅜" square

cut once diagonally

3-3" x 10¾" rectangles

Cut 2-3" x WOF strips

Subcut 6-3" x 10¾" rectangles

#### MAIN BLOCK

Assorted lights:

from EACH of the 8 prints:

Cut 1-10¾" x WOF strip

Subcut 14-10¾" x 3" rectangles

Cut 1-3⅜" x WOF strip

subcut 2-3⅜" x 3⅜" squares

cut once diagonally

3-3" x 10¾" rectangles

#### INNER BORDER:

Cut 7-2" x WOF strips

#### FINAL BORDER:

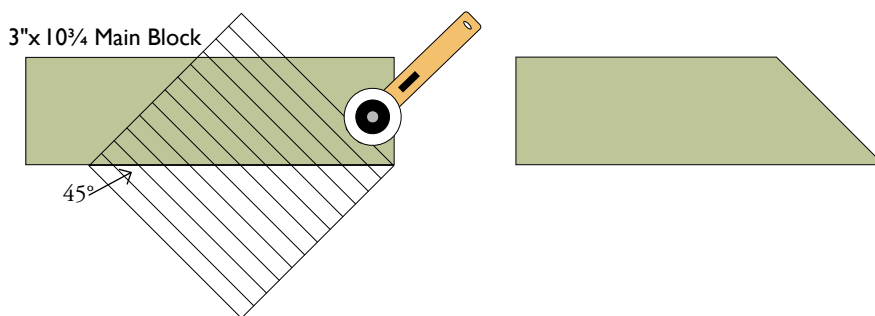
Cut 4-4" x WOF strips

Cut 4-2½" x WOF strips

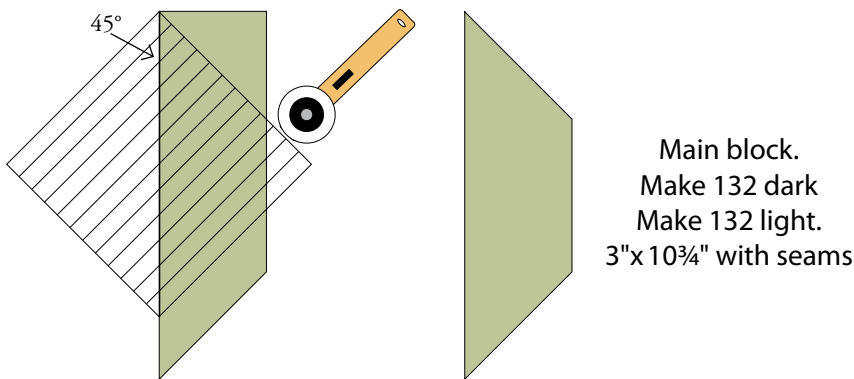
#### BINDING:

Cut 8-2½" x WOF strips

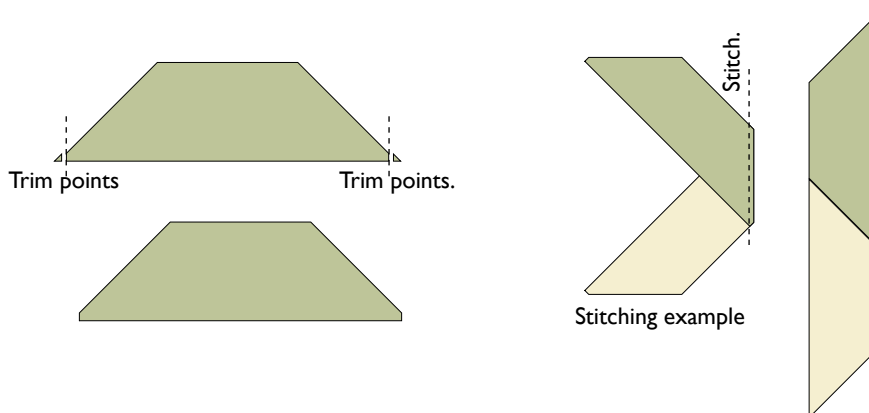
- 1 Trim the rectangles to make the trapezoids. Align the 45° line of a ruler along the bottom of the rectangle with the ruler tip exactly at the bottom right hand corner. Cut.



- 2 Rotate the rectangle (or the mat) 90°. Align the 45° line of a ruler along the bottom of the rectangle with the ruler tip exactly at the upper left hand corner. Cut. Repeat with each of the rectangles.



- 3 Optional: Trim the bottom points of the trapezoid 3/8" for easier piecing. There are rulers available to make this process quicker and more accurate.



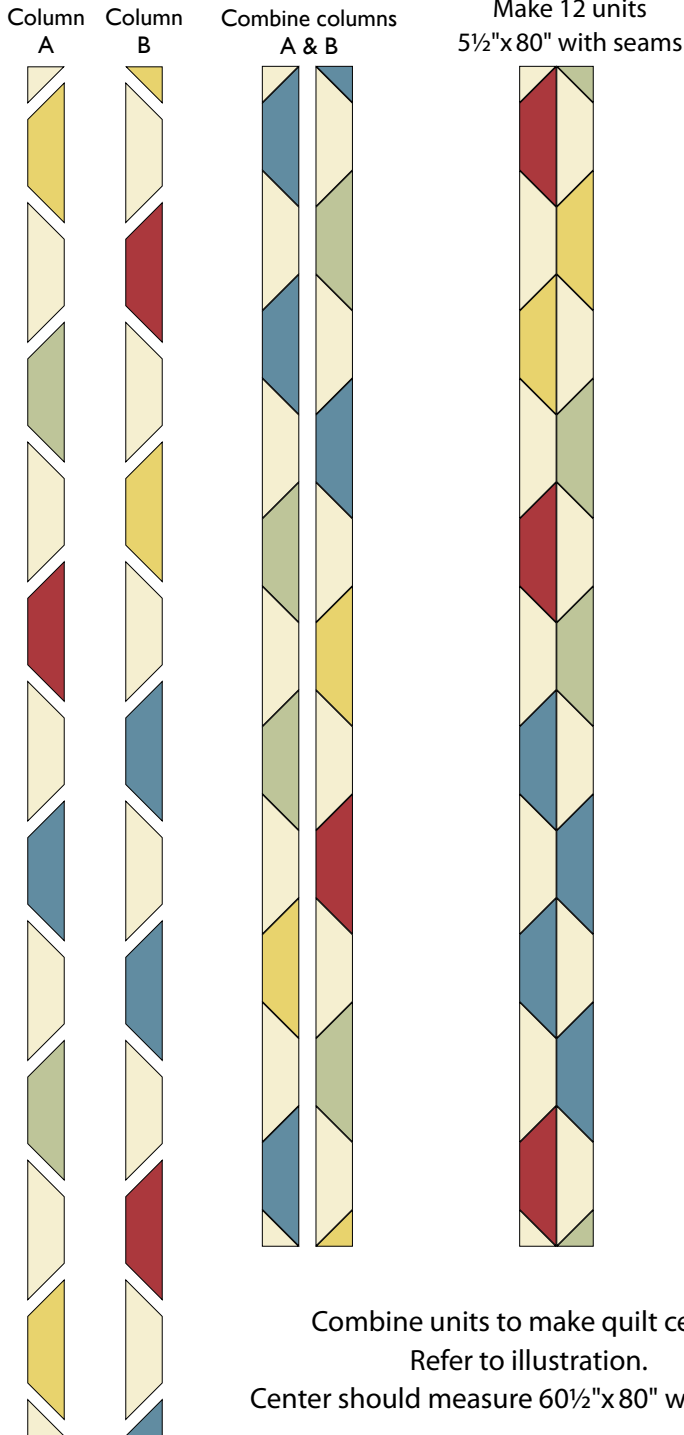
moda

4 Two types of columns make up the quilt top.  
Make 12 of each.

**Column A** requires 6 dark Main blocks, 5 light main blocks, and 2-3<sup>3</sup>/<sub>8</sub>" light triangles.

**Column B** requires 5 dark Main blocks, 6 light main blocks, and 2-3<sup>3</sup>/<sub>8</sub>" dark triangles.

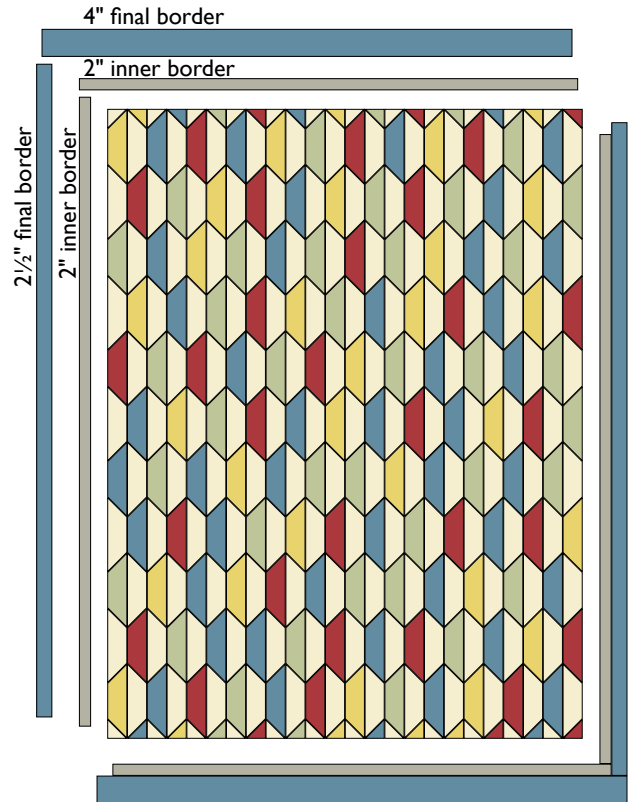
Sew the columns together to make the quilt center.



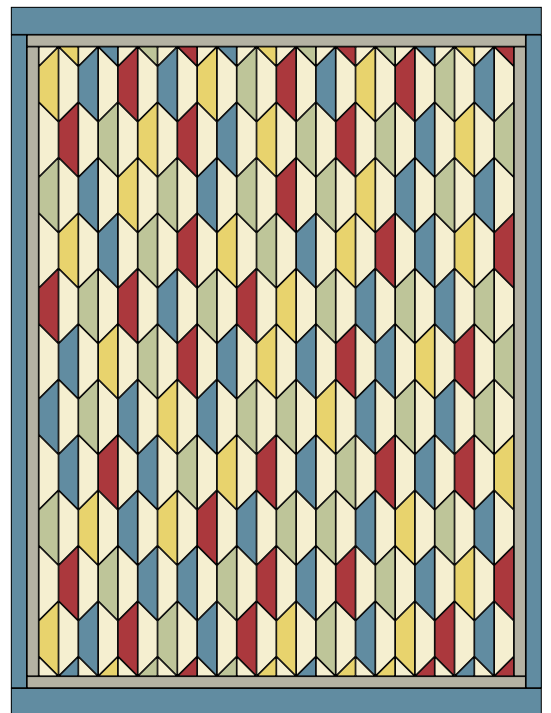
Combine units to make quilt center.  
Refer to illustration.  
Center should measure 60 1/2" x 80" with seams.

*moda*  
MODAFABRICS.COM

5 Add the 2" inner borders, sides first then top and bottom. Add the 2 1/2" final borders to the sides. Add the 4" final borders to the top and bottom. *Before adding each border, measure across the center of the quilt for the best measurements for the length of each border.*



6 Layer, quilt, bind and ENJOY!



**Fabric requirements:**

**Main Block**

15 Dark prints: ⅓ yard of EACH



Stock #31036-27



Stock #31037-13



Stock #31038-21



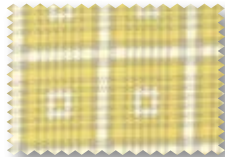
Stock #31041-15



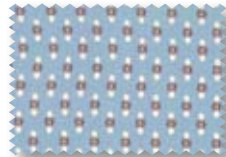
Stock #31040-14



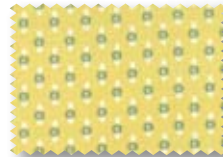
Stock #31036-14



Stock #31037-11



Stock #31038-11



Stock #31038-13



Stock #31040-21



Stock #31036-21



Stock #31041-17



Stock #31038-15



Stock #31040-17



Stock #31040-13

**Main Block**

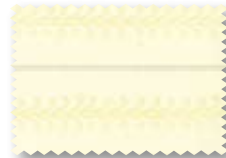
8 Light prints: ½ yard of EACH



Stock #31035-11



Stock #31035-13



Stock #31035-16



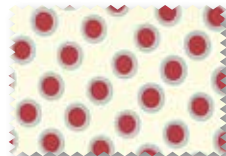
Stock #31038-16



Stock #31039-11



Stock #31039-13



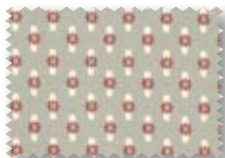
Stock #31039-16



Stock #31040-16



Designed by Holly Hickman for Moda



Stock #31038-18

**Inner border:**  
½ yard



Stock #31041-17

**Final border:**  
⅞ yard

**Binding:** ¾ yard  
**Backing:** 5½ yards