

2 Charm Packs, one yard, plus....

Size: 45" x 58½"

- All instructions include a ¼" seam allowance.
- 22" measurement is approximate. WOF—approximately 42".

Fabric requirements:

2 Charm packs	(80-5" x 5" squares)
Setting rectangles	1 yard
Binding	½ yard
Backing	4 yards

Cutting:

For the setting rectangles:

cut 3-9½" x WOF

then cut 24-9½" x 5"

cut 1-5" x WOF

then cut 4-5" x 9½"

For binding: cut 6-2½" x WOF



Cutting your own 5" squares:

¼ yard = 8 squares

1 fat quarter = 12 squares

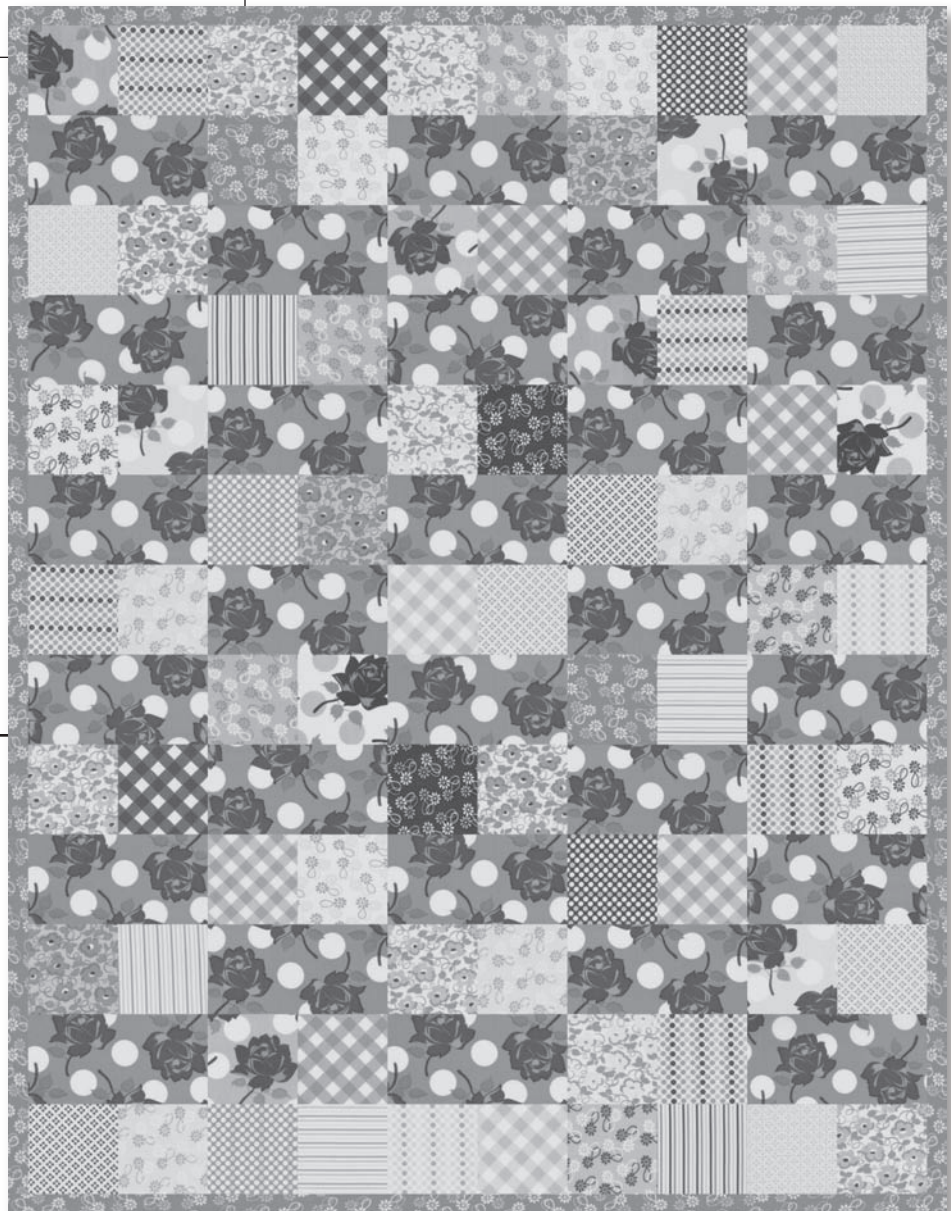
½ yard = 24 squares

¾ yard = 40 squares

1 yard = 56 squares

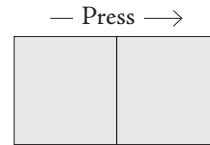
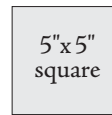
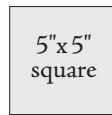
**The number of squares and the number of light and dark fabrics in a charm pack varies with each collection. The "charm" of a charm quilt is the mix of fabrics and value. For the fabric requirements we are assuming charm square packs have 40-5" x 5" squares and an equal mix of light and dark fabrics. All that said, let's make a quilt!*

moda



2 Charm Packs, one yard, plus....

1 To make the quilt center: sew together two 5" squares. Make 37 square pairs.



Make 37 square pairs

2 Sew the rows. For Row A: sew 5 square pairs together. Press in one direction. Make 2 Row As. For Row B sew 3 setting rectangles and 2 square pairs together. Press in one direction. Make 6 Row Bs. For Row C: sew 2 setting rectangles and 3 square pairs together. Press in one direction. Make 5 Row Cs. Join the rows.

3 Layer, quilt as desired and bind. ENJOY!

Row A – Make 2

Row B – Make 6

Row C – Make 5

