



A Morris Garden reproduces several of William Morris' own designs, echoing the subtle colors he obtained from natural dyes. Quilters looking for textiles to complement their Arts and Crafts decor will be thrilled by the reproductions' accuracy. Those unfamiliar with his designs will gain an appreciation of Morris's unparalleled skills in translating nature to cloth. *By Barbara Brackman*

Stepping Stones..... Quilt 87" x 87" finished

Fabrics:

- ✚ Setting blocks, side and corner triangles:
7 assorted one yards
- ✚ Nine patch center squares:
6 assorted one quarter yards (9" x WOF)
- ✚ Nine patch corner squares:
6 assorted one quarter yards (9" x WOF)
- ✚ Nine patch rectangles:
6 assorted 1/2 yards (18" x WOF)
- ✚ Binding: 3/4 yard
- ✚ Backing: 9 yards

Cutting:

- ✚ Setting squares, side and corner triangles:
From EACH of the 7 assorted one yards:
Cut 1-10 1/2" x WOF"
then cut 4-10 1/2" x 10 1/2" (need 25)
Cut 1-15 5/8" x WOF"
then 1-15 5/8" x 15 5/8"
cut in half twice diagonally
From the remaining fabric:
Cut 2-8 1/4" x 8 1/4" squares
then cut in half diagonally (corners)
- ✚ Nine patch center squares:
From EACH of the 6 assorted 1/4 yards:
Cut 1-5 1/2" x WOF"
- ✚ Nine patch corner squares:
From EACH of the 6 assorted 1/4 yards:
Cut 2-3" x WOF"
- ✚ Nine patch rectangles:
From EACH of the 6 assorted 1/2 yards:
Cut 1-5 1/2" x WOF"
Cut 2-3" x WOF"
- ✚ Binding: Cut 9-2 1/2" x WOF"

Fabric: A Morris Garden
Barbara Brackman



William Morris was an extremely influential British designer in the last half of the nineteenth century. He watched in dismay as the Industrial Revolution changed the look and craftsmanship of everyday objects and vowed to return to the days of the hand-made article and design based on nature. His block-printed wallpapers and fabrics were carefully observed florals drawn from his garden. He packed his figures onto the background, creating layers of pattern with complex repeats of intertwining leaves and curving stems that almost defy analysis. His philosophy: "Everywhere a line ends it should look as if it had plenty of capacity for more growth." Morris developed the look that came to define Art Nouveau and the Arts and Crafts Movement. By the time he died in 1896 he had created a design revolution in which the "perfect Morris house" defined the late Victorian age.



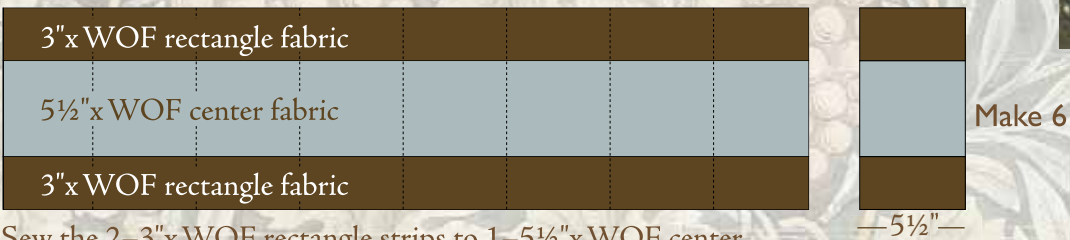
NINE PATCHES:

Each nine patch is made of four corners squares of one light print, four rectangles of one print and one center square. There are 6 nine patch block combinations, 6 blocks of each combination. (36 total nine patches)

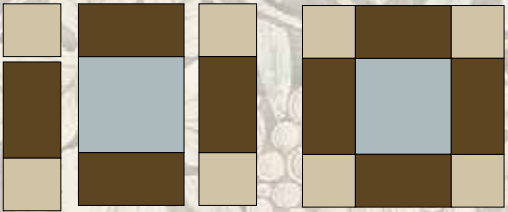
1 To make ONE nine patch block combination: use 2-3"x WOF corner fabrics, 2-3"x WOF and 1-5½"x WOF rectangle fabrics and 1-5½"x WOF center fabric.



Sew the 2-3"x WOF corner strips to 1-5½"x WOF rectangle fabric. Press towards from the rectangle fabric. Make one strip set. Cut into (12) 3" segments.



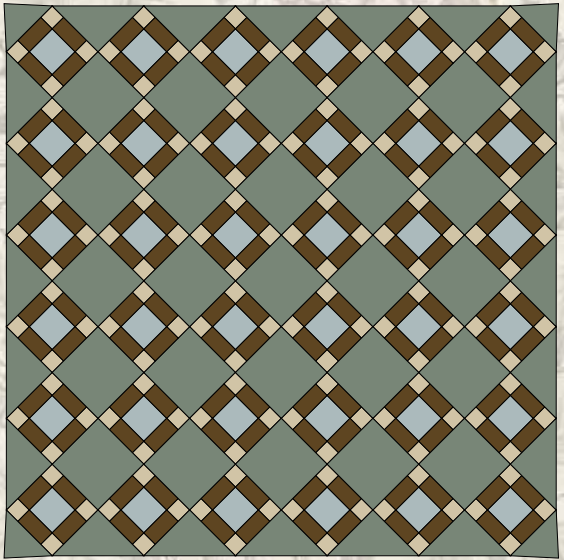
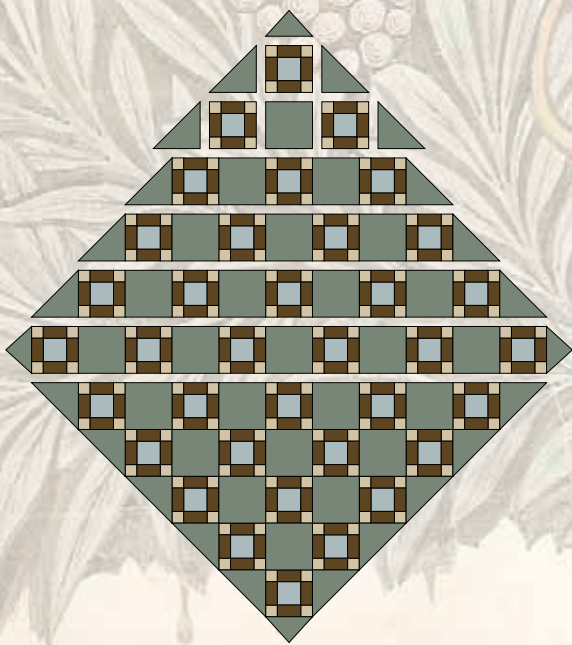
Sew the 2-3"x WOF rectangle strips to 1-5½"x WOF center fabric. Press away from the center fabric. Make one strip set. Cut into (6) 5½" segments.



Combine units to make 6 nine patches. Repeat Step 1 using the six fabric combinations. Make a total of 36 nine patch blocks. Blocks should measure 10½"x 10½" with seams.



2 To assemble the quilt top: use 36-nine patch blocks, 25-10½"x 10½" setting squares, 25 setting triangles and 4 corner triangles. Press seams away from the nine patch blocks.



3 Layer, quilt and bind to finish. Finished quilt should measure 87"x 87"