

moda



Quilt designed by Kelli Trimble.

AT WATER'S EDGE

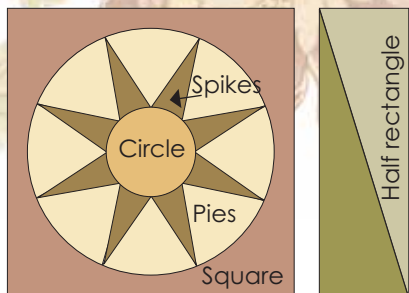
by Blackbird Designs

Size: 54"x56"

AT WATER'S EDGE

SIZE: 54"X56"

Blackbird Designs



At Waters Edge uses paper pieced stars and applique to create a striking star block. Thirty-one fabrics work in harmony in this quilt to create its' unique look.

The chart gives you an example of the print, it's number and fabric requirements as well as the number of the star block in which the different block pieces are used.

(See the assembly diagram on the next page to see the numbered star blocks.)

QUILTER BASICS

Read instructions before beginning a project. All instructions include a 1/4" seam allowance.

Press as you go. Press seams in one direction.

Cutting

To make one star cut:

- Square: 1-16"x 16"
- Pies: 8-8 1/2"x 5 1/2"
- Spikes: 8-7"x 4"
- Circle: 1-5"x 5"

Rectangles cut:

- 4-4 1/2"x 14 1/2"*
- (* 2612-12, 2612-14, 2612-14, 2612-15)

Half rectangles cut:

- See chart-5 1/2"x 16"
- (do not cut prints with *)

Binding:

- 8-2 1/2"x WOF"

Fabric Requirements	Square	Pies	Spikes	Circle	Rectangle # to cut
2611-12 1 yard	2 and 5				2
2611-13 1 fat quarter	10				
2611-14 1 yard	9 and 12				2
2611-15 1 yard	6 and 11				1
2611-16 1 fat quarter	1				
2612-12 1 fat quarter					1*
2612-14 1 fat quarter					2*
2612-15 1 fat quarter					1*
2613-12 1 fat quarter					1
2613-13 1/4 yard			9		
2613-14 1 yard		7	6		1
2613-15 1/4 yard		1			
2613-16 1/4 yard			4		
2614-11 1 yard		6 and 10	7	8	
2614-12 1/2 yard			2 and 12	1	
2614-13 1/4 yard			11		

Number of star block where piece is used

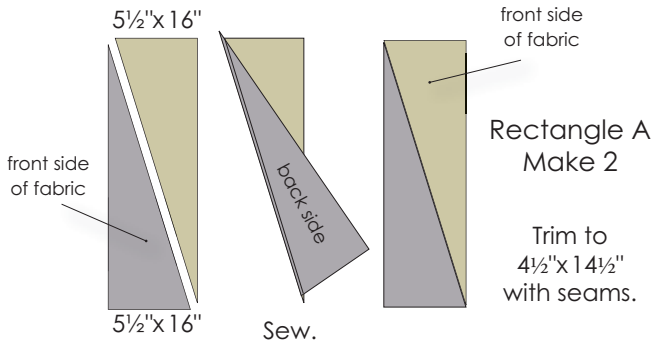
Number of rectangles to cut

Fabric Requirements	Square	Pies	Spikes	Circle	Rectangle # to cut
2615-12 1/2 yard		3		6 and 7	
2615-16 1 yard		2 and 4	5	9	
2615-17 1/3 yard				11	2
2616-12 1/2 yard		8		2 and 12	
2616-13 1/2 yard		5		4	
2616-16 1/2 yard		9			1
2617-12 1/4 yard			10	3 and 5	
2617-13 1/4 yard			8		
2617-15 1/2 yard		12			
2617-17 1 yard			3	10	2
2617-18 1 yard		11	1		4
2618-12 1 fat quarter	3				
2618-14 1 fat quarter	8				
2618-15 1 fat quarter	7				
2618-22 1 fat quarter	4				

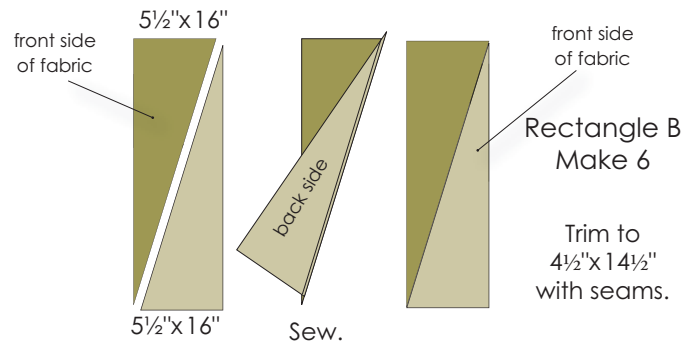
Binding: 3/4 yard
Backing: 4 yards

Construction and Assembly

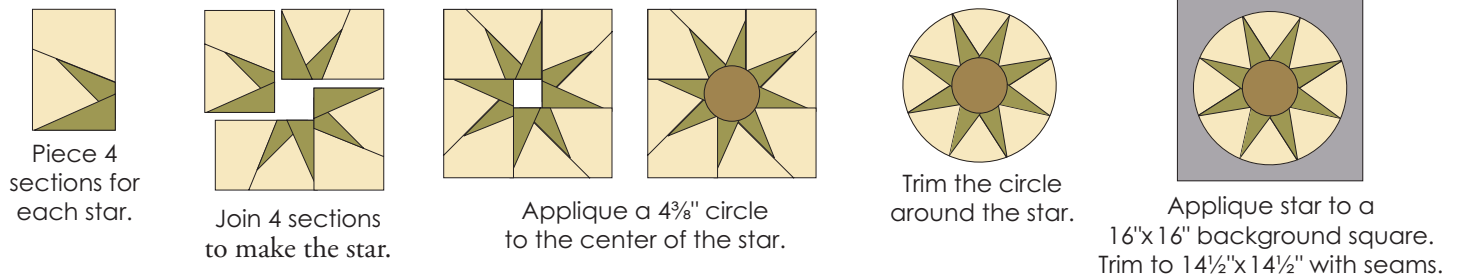
- 1 MAKE THE HALF-RECTANGLES:** Cut from the lower right corner to the upper left hand corner. Mix and join the rectangle halves. **Make 2 rectangle As.**



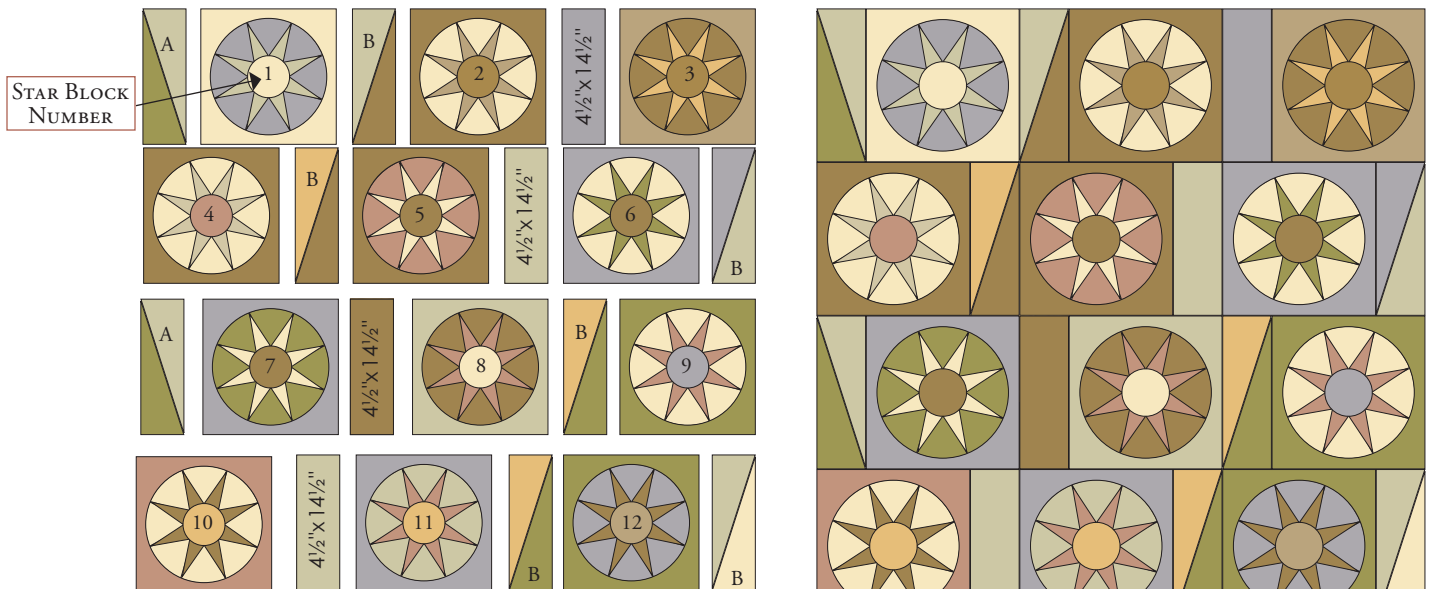
- 2 MAKE THE HALF-RECTANGLES:** Cut from the lower left corner to the upper right hand corner. Mix and join the rectangle halves. **Make 6 rectangle Bs.**



- 3 PAPER PIECING:** The 12 stars are each made up of four paper pieced sections. Make 48 copies of the paper piece template. To make one star, paper piece four sections, sew the sections together. Use the 4 3/8" circle template and a 5" square to prepare center circle. Appliqué the circle to the star center. Trim the large circle around the star block. Use your appliqué method of choice to appliqué the star to a 16" background square. Trim the completed square to measure 14 1/2" x 14 1/2" with seams. Repeat to make 12 stars.



- 4 ASSEMBLE THE QUILT TOP:** Join the 12 stars, 4-4 1/2" x 14 1/2" rectangles and rectangles A(2) & B(6) together to make the quilt top. Piece the blocks into rows, then join the rows. *See the diagram for placement.* Layer, quilt, bind and ENJOY!



AT WATERS EDGE

Size: 56"x56"

by Blackbird Designs

Circle template

4³/₈" circle

Cut 12.

Seam allowance not included.

center line

Note: Templates may also be used for freezer paper piecing method.

NOTE: When photocopying these templates, please check measurements as copiers may vary and some distortion may occur. Template should measure 5¹/₂"x8"

