

moda



Daydream Believer

wallhanging

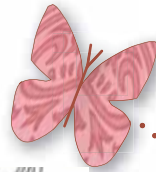
Includes Bonus Pattern for larger quilt

2 Sizes: 52"x46" wallhanging
79"x91" large quilt

Featuring the *Daydreams Collection*
by Deb Strain

Daydreams

collection



Deb Strain

JOURNEY

CUTTING

Daydream Believer Wallhanging

52"x46"

From EACH of 8 fat quarters:

- Cut 2-2¼"x22" strip
- then 1-2¼"x4½"
- 1-2¼"x6½"
- 1-2¼"x8"
- 1-2¼"x10"
- 1-2¼"x11½"

- Cut 2-5½"x22" strip
- then 7-5½"x3½"
- 1-5½"x5½"
- 1-3"x2½"

Inner border & binding:

- Cut 4-2"x WOF
- Sew together strips
- then 2-2"x33½"
- 2-2"x42½"
- Cut 5-2½"x WOF



QUILTER BASICS

- ☞ Read instructions before beginning a project.
- ☞ All instructions include a ¼" seam allowance.
- ☞ Press as you go. Press seams in one direction.

Daydream Believer Quilt

79"x91"

From EACH of 15 half yard cuts:

Cut 4-2¼"x WOF strips

From each strip cut

- 1-2¼"x4½"
- 1-2¼"x6½"
- 1-2¼"x8"
- 1-2¼"x10"
- 1-2¼"x11½"

Bonus
pattern

and

Cut 1-5½"x WOF strip

from each cut 7-5½"x3½" and

4-3"x2½"

1-5½"x5½" (from 4 strips only)

INNER BORDER & BINDING:

Cut 16-2½"x WOF

Set aside 9 strips for binding

Sew together 7 strips

then 2-2½"x69½"

2-2½"x77½"

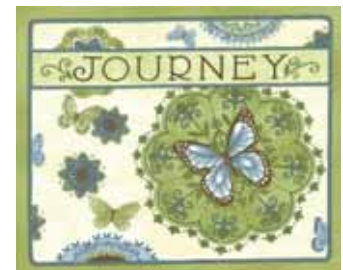
CUTTING THE PANEL

- 1 The panel blocks vary in size, averaging a size of 10¼"x12¼". Cut the 5 blocks to 11½"x13½" cutting into the sashing area between the blocks. *Hint: Spray the panel with spray starch and leave for several minutes. This will make the panel easier to cut.*



Inspiration-Grass Panel 19190-12

Panel block
averages 10¼"x12¼"



Cut 5 panel blocks.
11½"x13½" with seams.

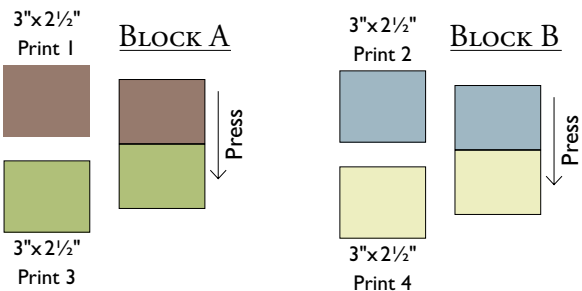
moda

MAKING THE COURTHOUSE STEPS BLOCK

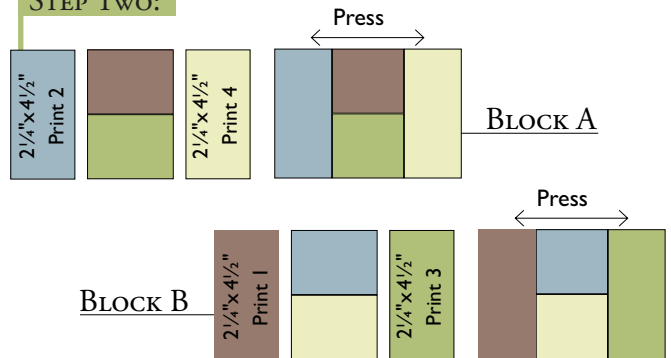
Since the block is a rectangle and not a square, both "Daydream Believer" quilts require 2 variations of the courthouse steps block. Pay close attention to color placement.

To make one block use Prints 1, 2, 3 & 4. Layout the courthouse step block before beginning the assembly of the block. Each block uses four different prints. Follow the steps to make one block. Press away from the center of the block. Repeat to make 2 of each block for the small quilt. (Repeat to make 15 of each block for the large quilt)

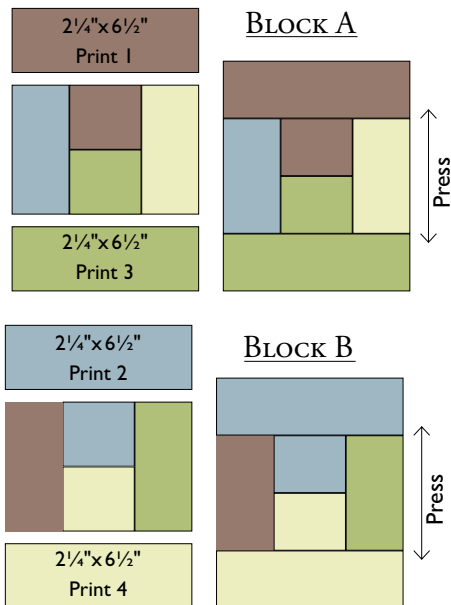
STEP ONE:



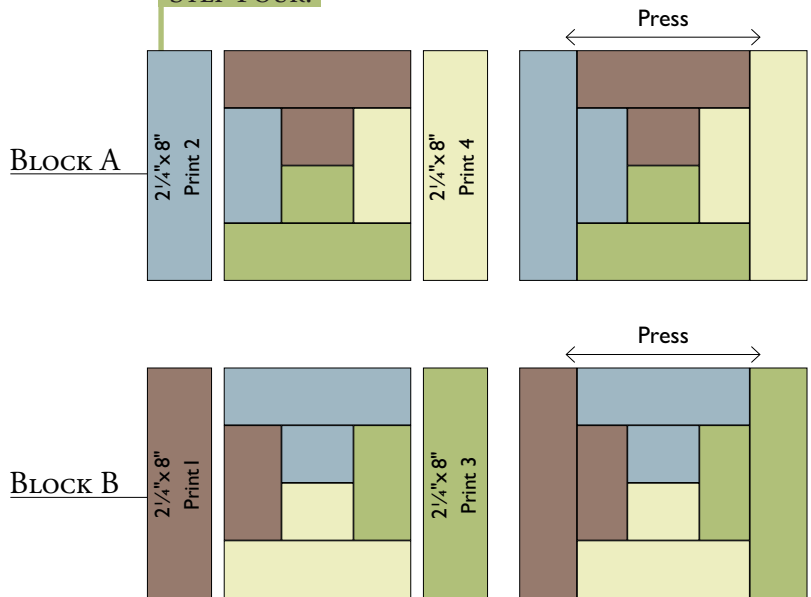
STEP TWO:



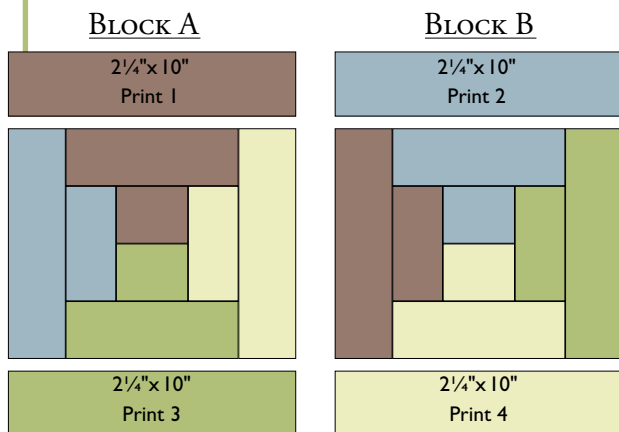
STEP THREE:



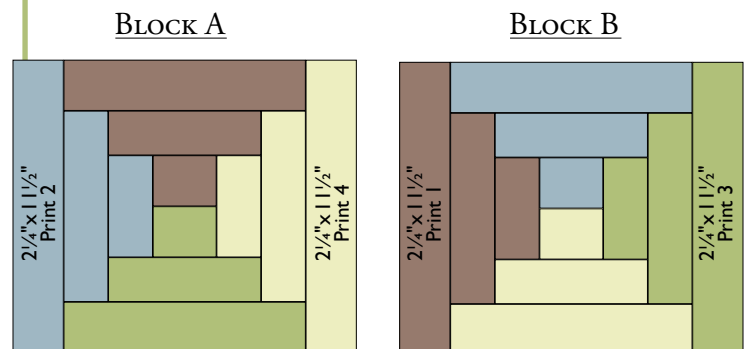
STEP FOUR:



STEP FIVE:



STEP SIX:



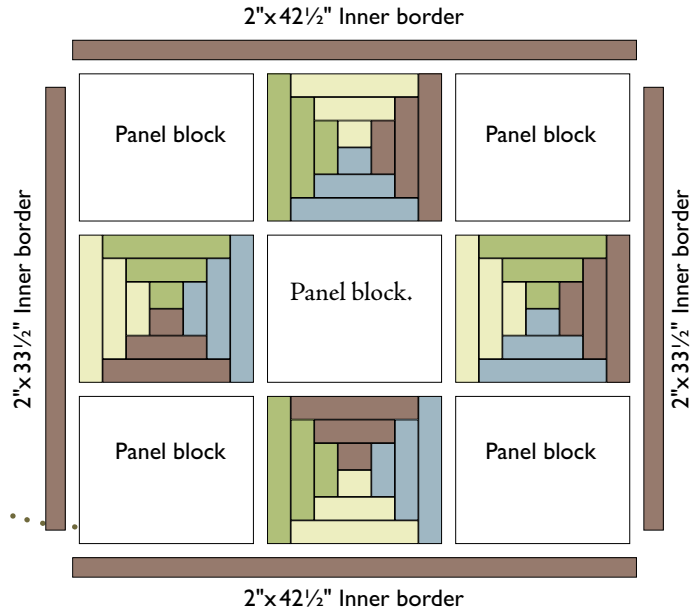
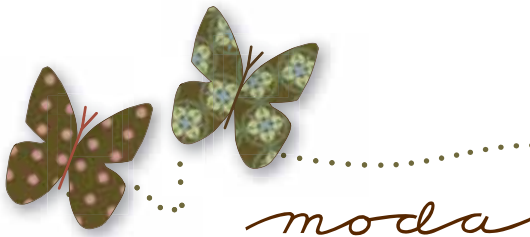
Courthouse Steps Blocks. should measure 11 1/2" x 13 1/2" with seams.

Make 2 A's and 2 B's for small quilt
Make 15 A's and 15 B's for large quilt.

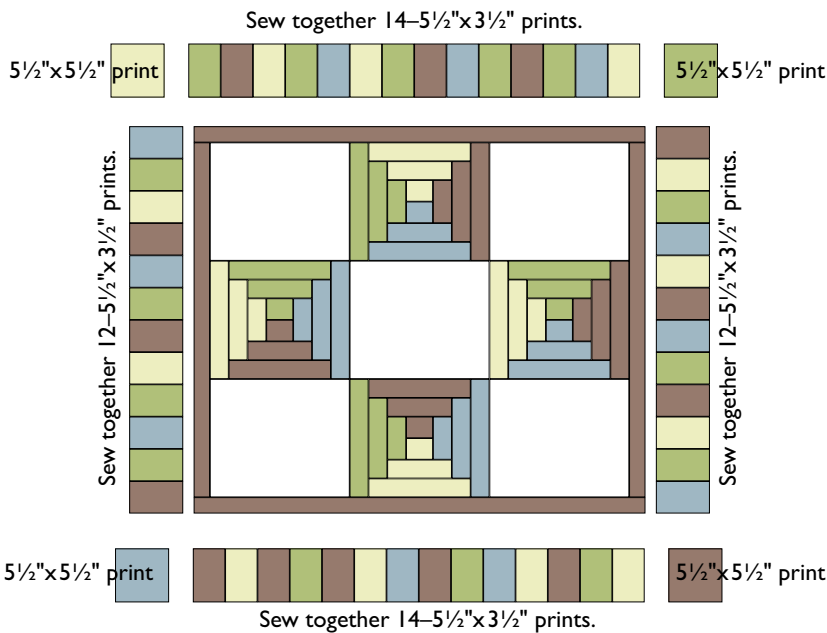
2 To assemble the center of the quilt and add the inner borders use: 5 panel blocks, 4 courthouse step blocks and 2-2"x33½" and 2-2"x42½" inner borders. Sew together 3 rows of alternating panel blocks and courthouse step blocks. Press the rows in opposite directions. Sew the rows together. Add the 2-2"x33½" inner borders to the sides of the quilt. Press away from the quilt center. Add the 2-2"x42½" inner borders to the top and bottom of the quilt. Press away from the quilt center.

Sew together the block rows.

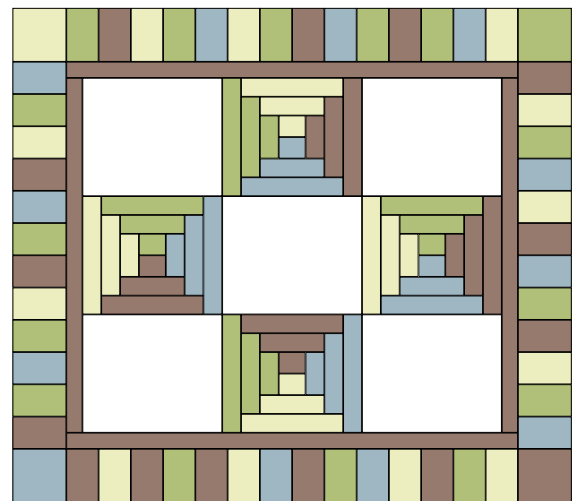
Add the 2" wide inner borders, sides first then top and bottom.



3 To assemble the Scrappy Final Borders use: 52-5½"x3½" and 4-5½"x5½" assorted prints. For top and bottom borders make 2 rows of 14-5½"x3½" assorted prints. *Stitch on long side of rectangles.* Press the rows in one direction. Then add one 5½"x5½" print square to each end of these rows. Press away from the 5½" square. For side borders make 2 rows of 12-5½"x3½" assorted prints. Press the rows in one direction. Add the side borders first then the top and bottom borders to the quilt. Press away from the quilt center.

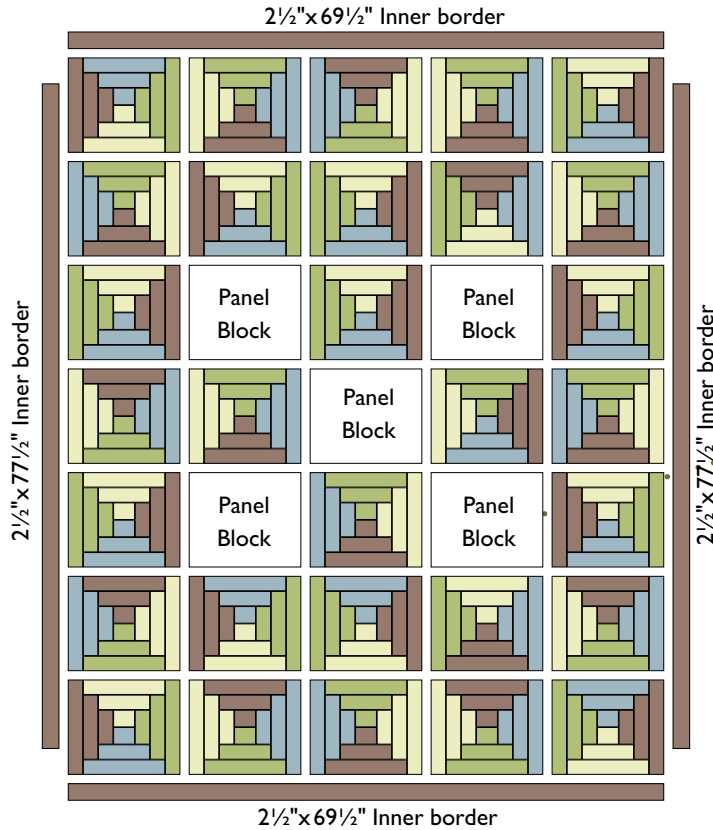


Layer, quilt, bind and enjoy your quilt!



Daydream Believer Wallhanging
52"x46" quilt

4 To assemble the center of the quilt and add the inner borders use: 5 panel blocks, 30 courthouse step blocks and 2-2½" x 77½" and 2-2½" x 69½" inner borders. (Note that the inner border on this quilt is wider than on the small quilt.) Refer to diagram to arrange blocks. Sew blocks into rows. Press the rows in opposite directions. Then join the rows. Add the 2-2½" x 77½" inner borders to the sides of the quilt. Press away from the quilt center. Add the 2-2½" x 69½" inner borders to the top and bottom of the quilt. Press away from the quilt center.

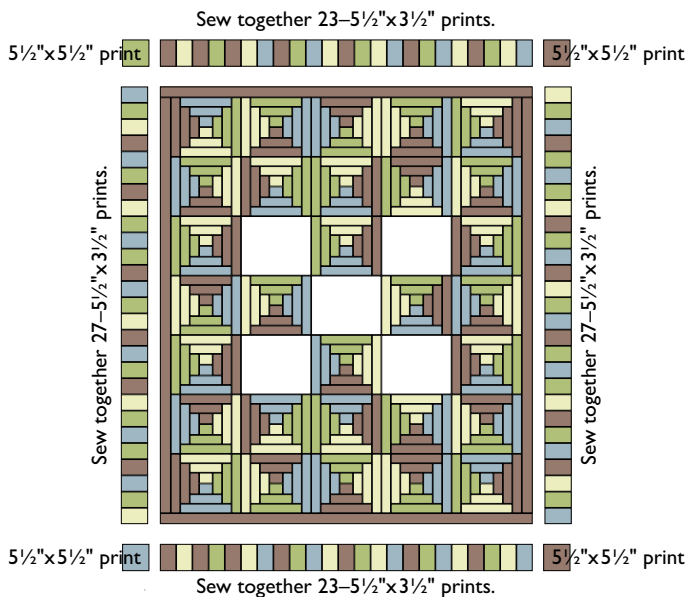


Sew together the block rows.

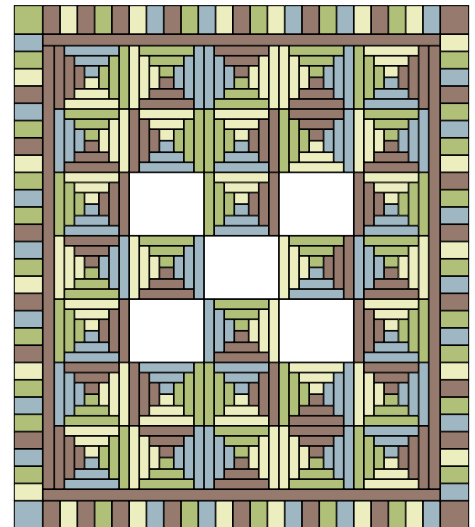
Add the 2½" wide inner borders, sides first then top and bottom.



5 To assemble the Scrappy Final Borders, make 2 rows of 23-5½" x 3½" assorted prints for the top and bottom. *Stitch on long side of rectangles.* Press the rows in one direction. Then add one 5½" x 5½" print square to each end of these rows. Press away from the 5½" square. For side borders make 2 rows of 27-5½" x 3½" assorted prints. Press the rows in one direction. Add the side borders first then the top and bottom borders to the quilt. Press away from the quilt center.



Daydream Believer
79" x 91" quilt



Fabrics

- One panel: *Inspiration-Grass* 19190-12
- Courthouse step blocks and pieced border:
One fat quarter each of: (8 fat quarters total)



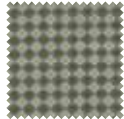
Butterflies-Grass
19192-13



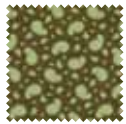
Flutter-Breeze
19198-11



Wallpaper-Breeze
19194-15



Mosaic Tiles-Breeze
19200-15



Paisley-Grass
19196-12



Journey-Breeze
19201-11



Garden-Grass
19197-12



Dot-Grass-White
19202-16

- Inner border & Binding:

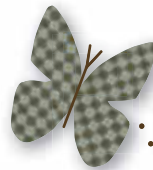


Damask-Chocolate
19195-15 ¾ yard

- Backing: 3½ yards



Daydream Believer Wallhanging
52"x46" quilt

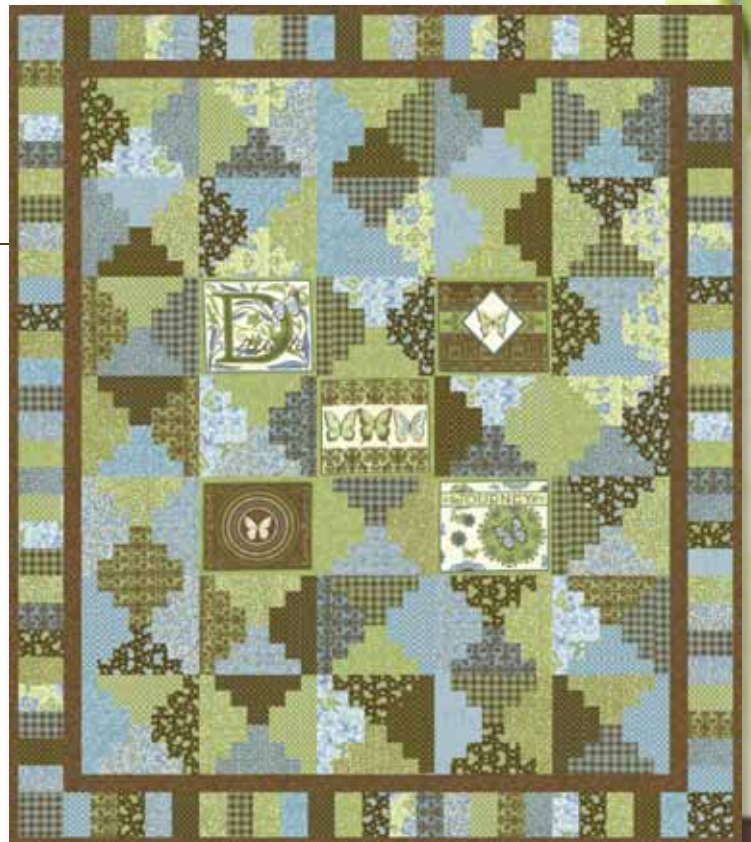


- Instructions are included to
••• make two quilt sizes.

Daydream Believer
79"x91" quilt

Fabrics

- One panel
- Courthouse step blocks and pieced border:
15 assorted half yard cuts
- Inner border & binding – 1¼ yards
- Backing: 6 yards



moda
FABRICS

PS 19190 — SUGGESTED RETAIL \$3.00