

moda



HARTFIELD

Barbara Brackman

Quilt -70" x70"



moda

Quilt Size -70"x70"

HARTFIELD

Barbara Brackman



Quilter Basics

- Read instructions before beginning a project.
- All instructions include a 1/4" seam allowance.
- Press as you go. Press seams in one direction.

FABRIC REQUIREMENTS

Note: This is a medallion style quilt and will be pieced from the center outward. To avoid confusion, as some cutting sizes are similar, label cut pieces by the round in which they are used.



FABRIC 1
8130-14 Brown Floral 2½ yds
Center and Outer Border



FABRIC 2
8131-11 Pink Scroll Print..... 7/8 yd
Center Corners and Round 7 Border



FABRIC 3
8133-15 Purple and Pink Floral 1 yd
Round 2, Round 4 and Binding



FABRIC 4
8131-13 Tan Scroll Print 1/3 yd
Round 2 Background



FABRIC 5
8130-12 Green Floral 1/3 yd
Round 3 Border



FABRIC 6
8138-12 Pink Solid 1/4 yd
Round 4 Blocks



FABRIC 7
8138-19 Purple Solid 1/4 yd
Round 4 Blocks



Fabric 8
8138-21 Green Solid 3/4 yd
Round 4 and Round 6 Blocks



FABRIC 9
8137-11 Pink Leaf Print..... 1/4 yd
Round 4 Blocks



FABRIC 10
8137-15 Purple Leaf Print 1/4 yd
Round 4 Blocks



FABRIC 11
8137-12 Green Leaf Print 1/4 yd
Round 4 Blocks



FABRIC 12
8134-13 Tan Swirl Print 5/8 yd
Round 5 Border



FABRIC 13
8135-11 Light Small Floral Print..... 1 yd
Round 6 Blocks



FABRIC 14
8134-14 Brown Swirl Print 3/4 yd
Round 6 Blocks

CUTTING

FABRIC 1- LARGE BROWN FLORAL

First cut 1-18"xWOF strip. Select a flower motif for center of quilt and fussy cut a 9½"x9½" center square.

From remaining fabric (2 yds.) cut 2-7½"x **length** of fabric side border strips. *Note: Fabric is directional.*

Then cut 6-7½"xWOF (approx. 28") strips for top and bottom borders.

FABRIC 2 PINK SCROLL PRINT

Cut 1-5"xWOF strip
subcut 4-5"x5" squares for center corners
Cut 6-3½"xWOF strips for Round 7 borders

CUTTING-cont.

FABRIC 3 PURPLE/PINK SMALL FLORAL PRINT

- Cut 1-4½"xWOF strip
subcut 4-4½"x4½" corner squares for Round 4
- Cut 1-5"xWOF strip
subcut 8-5"x5" squares for Round 2
flying geese blocks
- Cut 8- 2½"xWOF strips for binding

FABRIC 4 TAN SCROLL PRINT

- Cut 2- 5"xWOF strips
subcut 4-5"x9½" rectangles for Round 2
flying geese blocks and
4-5"x5" squares for Round 2 corner squares

FABRIC 5 LARGE GREEN FLORAL

- Cut 3-3½"xWOF strips
subcut 2-3½"x18½" side borders for Round 3
and 2-3½"x24½" top and bottom borders for Rd. 3

FABRIC 6 PINK SOLID

- Cut 1-5¼"x WOF strip
subcut 6-5¼"x5¼" squares, cut twice diagonally
for Round 4 hourglass blocks

FABRIC 7 PURPLE SOLID

- Cut 1-5¼"x WOF strip
subcut 3-5¼"x5¼" squares, cut twice diagonally for
Round 4 hourglass blocks

FABRIC 8 GREEN SOLID

- Cut 1-5¼"x WOF strip
subcut 3-5¼"x5¼" squares, cut twice diagonally for
Round 4 hourglass blocks
- Cut 3-5½"xWOF strips
subcut 32-5½"x3" rectangles for Round 6
flying geese blocks

FABRIC 9 SMALL PINK LEAF PRINT

- Cut 1-5¼"x WOF strip
subcut 6-5¼"x5¼" squares, cut twice diagonally
for Round 4 hourglass blocks

FABRIC 10 SMALL PURPLE LEAF PRINT

- Cut 1-5¼"x WOF strip
subcut 3-5¼"x5¼" squares, cut twice diagonally
for Round 4 hourglass blocks

FABRIC 11 SMALL GREEN LEAF PRINT

- Cut 1-5¼"x WOF strip
subcut 3-5¼"x5¼" squares, cut twice diagonally
for Round 4 hourglass blocks

FABRIC 12 TAN SWIRL PRINT

- Cut 4-4½"xWOF strips
subcut 2- 4½"x32½" side borders for Round 5
and 2- 4½"x40½" top and bottom borders
for Round 5

FABRIC 13 LIGHT SMALL FLORAL PRINT

- Cut 3-5½"x WOF strips
subcut 32-5½"x3" rectangles for Round 6
flying geese blocks
- Cut 5-3"x WOF strips
subcut 64-3"x3" squares for Round 6
flying geese blocks

FABRIC 14 BROWN SWIRL PRINT

- Cut 1-5½"x WOF strip
subcut 4- 5½"x 5½" corner squares for Round 6
- Cut 5-3"xWOF strips
subcut 64-3"x3" squares for Round 6
flying geese blocks

CONSTRUCTION AND ASSEMBLY

ROUND 1

1. Using a mechanical pencil, draw a diagonal line on the wrong side of the 4-5"x5" pink scroll print squares.
2. With right sides together, align edges of pink squares and fussy cut center square. *Note direction of diagonally line.*
3. Stitch on marked line.
4. Trim away extra pink fabric leaving a ¼" seam allowance.
5. Press pink triangle toward corner of center block.
6. Repeat with remaining squares. Block should measure 9½"x 9½" with seams.



draw diagonal lines on wrong side of 5" x 5" squares



Press triangle toward corner. Repeat for remaining corners.



Block should measure 9½" x 9½" with seams

stitch on marked line
trim away pink fabric
leaving
¼" seam allowance



ROUND 2

ASSEMBLE FLYING GEESE BLOCKS – 4 total

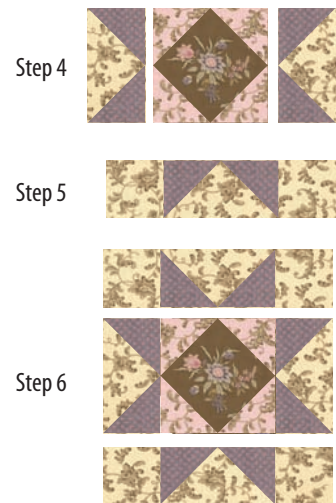
1. Using a mechanical pencil draw a diagonal line on the wrong side of the 8–5" x 5" purple/pink squares. *Same as in Round 1.*
2. With right sides together, align edges of marked square and 5" x 9½" rectangle. *Note direction of diagonal line.* Stitch on marked line. Trim seam to ¼" as in Rd. 1. Press triangle toward corner. Repeat for opposite corner. Flying geese block should measure 5" x 9½" with seams.
3. Repeat Steps 1 & 2 with remaining 5" x 9½" rectangles. Press.
4. Add a complete flying geese block to opposite sides of the center square. *Note: Purple triangles should be next to center square.* Press.
5. Sew a 5" x 5" corner square to opposite ends of the 2 remaining large flying geese blocks. Press.
6. Add flying geese units to top and bottom of center block.

Quilt top should measure 18½" x 18½" with seams after Round 2.

ROUND 2



Make 4 Large Flying Geese Blocks
Block should measure 9½" x 5" with seams



ROUND 3

GREEN FLORAL BORDER

1. Stitch a 3½" x 18½" border strip to sides of quilt top. Press.
2. Then add 3½" x 24½" borders to top and bottom.

Quilt top should measure 24½" x 24½" with seams after Round 3.

ROUND 4



PIECING HOURGLASS BLOCKS

1. Select 1 solid pink triangle and 1 pink leaf triangle. Join short sides of triangles. *See diagram.* Press.
2. Repeat Step 1, but join opposite short sides of triangle. See diagram. Press.
3. Join two like triangle units to make an hourglass block. Block should measure 4½" x 4½" with seams.

Repeat Steps 1–3 to make remaining hourglass blocks – 6 purple, 12 pink and 6 green hourglass blocks.

4. Refer to quilt image for color placement. Piece 4 rows of 6 blocks alternating direction of solid and print triangles. Press.
5. Join pieced rows to opposite sides of quilt top. Press.
6. Add purple/pink setting squares to opposite ends of remaining pieced rows. Press.
7. Sew remaining hourglass rows to top and bottom of quilt top.

Quilt top should measure 32½" x 32½" with seams after Round 4.

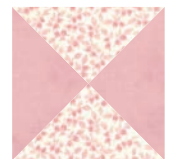
Step 6



ROUND 4

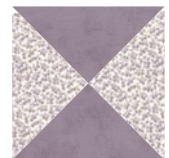


Step 3

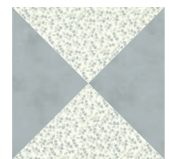


Make 12 Pink Blocks

Make 6 Purple Blocks



Make 6 Green Blocks



ROUND 6

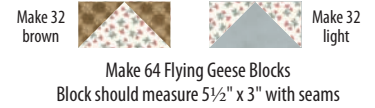


ROUND 5

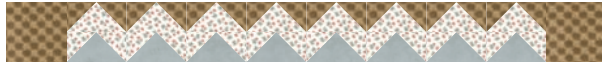
TAN SWIRL BORDER

1. Sew $4\frac{1}{2}$ "x $32\frac{1}{2}$ " border strips to sides of quilt top. Press.
2. Add $4\frac{1}{2}$ "x $40\frac{1}{2}$ " border strips to top and bottom. Press.

Quilt top should measure $40\frac{1}{2}$ "x $40\frac{1}{2}$ " with seams after Round 5.

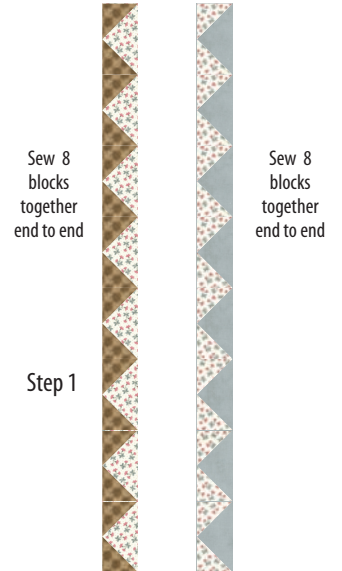


ROUND 6



PREPARING THE ZIG-ZAG BORDER

1. Using a mechanical pencil draw a diagonal line on the wrong side of the $6\frac{1}{2}$ - 3 "x 3 " brown squares and the $6\frac{1}{2}$ - 3 "x 3 " light floral print squares.
 2. Align edges of marked brown square and a light floral print rectangle.
Note direction of diagonal line.
- Stitch on marked line. Trim away extra brown fabric leaving a $\frac{1}{4}$ " seam allowance. Press triangle toward corner. Repeat for opposite corner of rectangle. Flying geese unit should measure $5\frac{1}{2}$ "x 3 " with seams. Repeat Steps 1 and 2 to make a total of 64 flying geese units – 32 with brown corners and 32 with light floral corners. See *diagram*.



PIECING THE ZIG-ZAG BORDER

1. Piece 8 brown corner flying geese units together end to end. Press. Then piece 8 light corner flying geese units together end to end. Press.
2. Sew the 2 pieced rows together with the brown row on top to form a light zig-zag border strip.
3. Repeat Steps 1&2 to make a total of 4 zig-zag borders.
4. Add a zig-zag border to opposite sides of the quilt top. The green triangles should be next to quilt center. Press.
5. Add a brown corner square to opposite ends of the remaining zig-zag borders. Add prepared borders to top and bottom of quilt top. Press.

Quilt top should measure $50\frac{1}{2}$ "x $50\frac{1}{2}$ " with seams after Round 6.



ROUND 7

PINK SWIRL BORDER

1. Join pink border strips end to end.
2. Cut $2-3\frac{1}{2}$ "x $50\frac{1}{2}$ " border strips and sew to sides of quilt top. Press.
3. Cut $2-3\frac{1}{2}$ "x $56\frac{1}{2}$ " border strips add to top and bottom of quilt.

Quilt top should measure $56\frac{1}{2}$ "x $56\frac{1}{2}$ " with seams after Round 7.



ROUND 8

FINAL BORDER

1. Measure quilt top through the middle from side to side. Quilt top should measure 56½" .
2. Piece 2 sets of three shorter border strips together end to end. Press and then cut strips to the measurement from Step 1.
3. Add strips to **top and bottom** of quilt top. Press.
4. Measure quilt top once again from top to bottom.
5. Cut the long border strips to that measurement (approx. 70½").
6. Add prepared border strips to sides of quilt top to complete this medallion style quilt top.

Quilt top should measure 70½"x70½" with seams after Round 8.

FINISHING

1. Prepare the binding. Sew binding strips together, end to end. Press binding strips in half lengthwise with wrong sides together.
2. Layer and baste the quilt top, batting and backing. Quilt by machine or by hand. Apply the prepared binding to quilt.

Finished Quilt 70"x70"

