



Pillow is 30" x 20"

Quilt is 50" x 70".

MONKEY TALES *erin michael* *moda*

MONKEY TALES

erin michael

Pillow Case is 20" x 30".

Quilt is 50" x 70".

Note: The templates pages need to be printed on 11" x 17" paper.

Fabric Cutting

Patchwork:

From EACH of the 7 Fat Quarters cut
(see diagram)

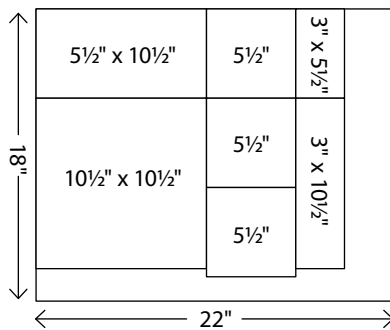
1-10½" square

1-5½" x 10½" rectangle

3-5½" squares

1-3" x 5½" rectangle

1-3" x 10½" rectangle



Background, and Pillow Body:

Cut off the selvages.

1-55" x width of fabric (background)

1-26½" x 41" rectangle (pillow body)

Pillow Cuff: *Cut off the selvages.*

1-10" x 41" strip

Binding and Pillow Accent

7-2½" x width of fabric strips

Set aside 1 strip for the pillow.

Cut off the selvages.

Sew the remaining 6 strips end to end to make the binding.

moda

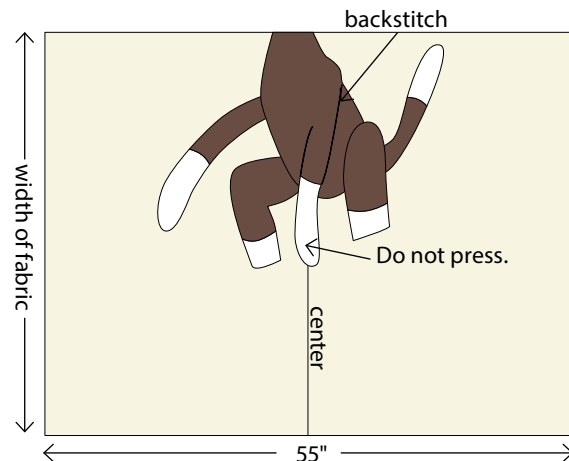
Use ¼" seams and press in the direction of the arrows.

Quilt Construction

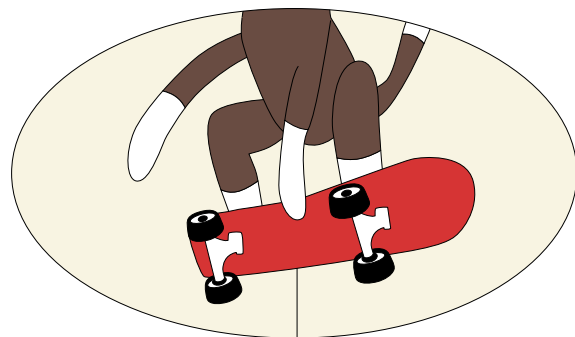
1 Monkey Face, Body, and Skateboard

Fusible Appliqué - All shapes are reversed for this technique.

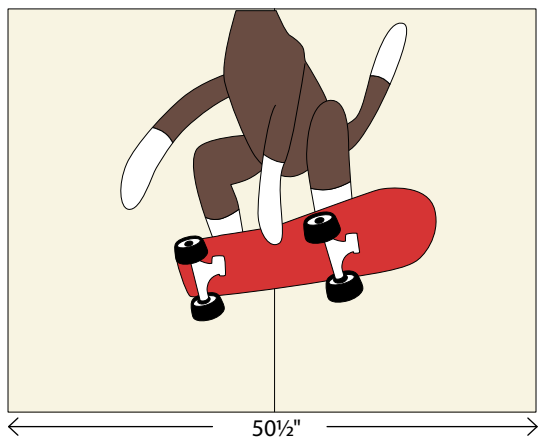
- Trace the templates on the lightweight fusible webbing, including the dashed lines that indicate where the pieces overlap, following the manufacturer's directions. Mark the fabric color on each template. Cut out the pieces ¼" from the drawn lines.
- Press each piece to the wrong side of the labeled fabric color. Cut out the fabric pieces on the drawn lines.
- Fold the 55" x width of fabric background in half. Peel the paper from the back of the pieces revealing the fusible for the monkey body. Following the diagram for the assembly order for the monkey (page T2) noting where the pieces overlap, place all the body pieces on the background as shown. Press. *Do not press the hand that will be on top of the skateboard.* Use a blanket stitch and black thread, to appliqué the pieces to the background. (The black thread helps the body to stand out from the background.) Use a backstitch and black thread for the lines that define the arm that crosses the body.



- Peel the paper from the back of the pieces revealing the fusible for the skateboard. Following the diagram for the assembly order for the skateboard (page T6) noting where the pieces overlap, place all the pieces on the background as shown. Press. Use a blanket stitch and black thread, to appliqué the skateboard. Finish the hand.



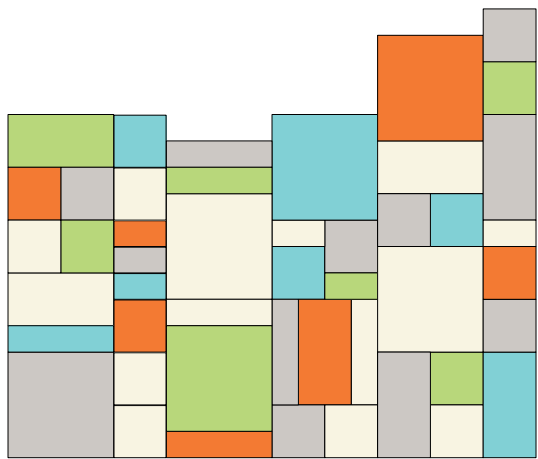
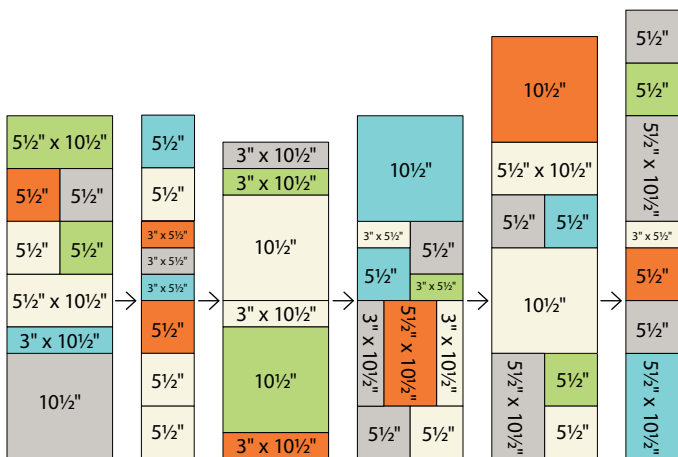
(F) Trim to $50\frac{1}{2}$ " wide, keeping the monkey in the center.



moda

2 Patchwork

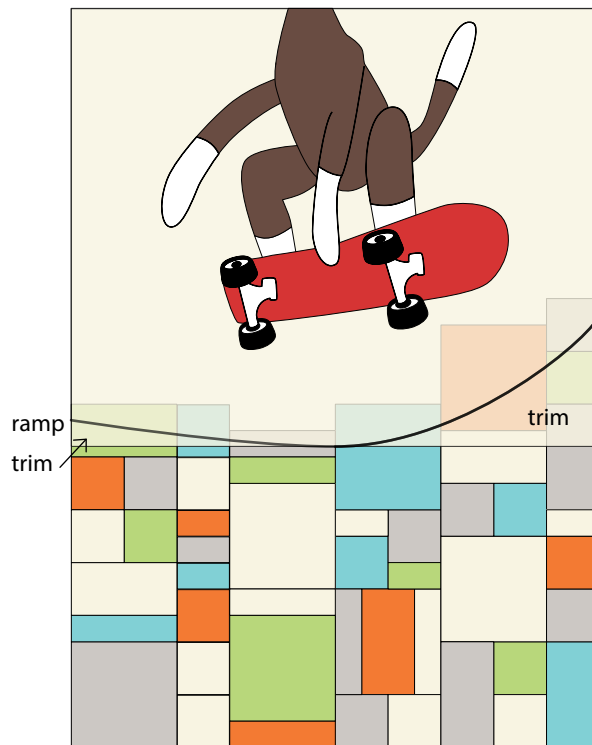
Arrange and sew the squares and rectangles in columns as shown. (You will have 2 leftover shapes.)
Join the columns.



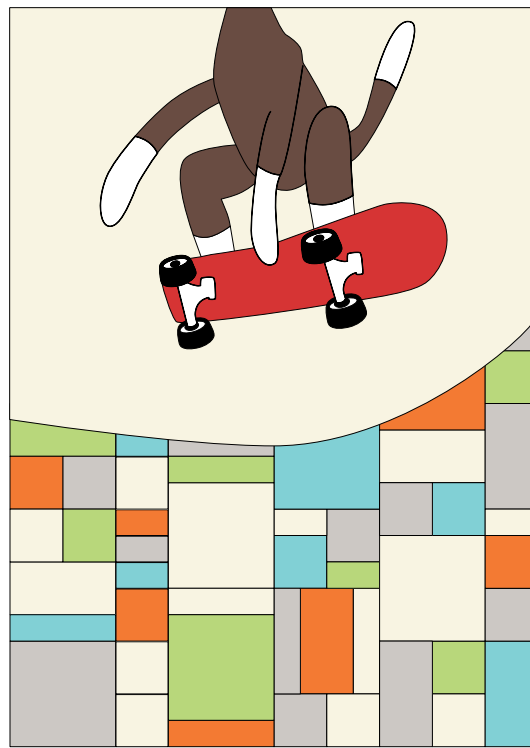
$50\frac{1}{2}$ " x 43" unfinished

3 Ramp

Position the monkey block on top of the patchwork. Draw a line to create the ramp being sure that the patchwork is covered. Trim away the fabric below the line. Use a blanket stitch and your choice of thread to appliqué the pieces together.



4 Layer, quilt and bind.

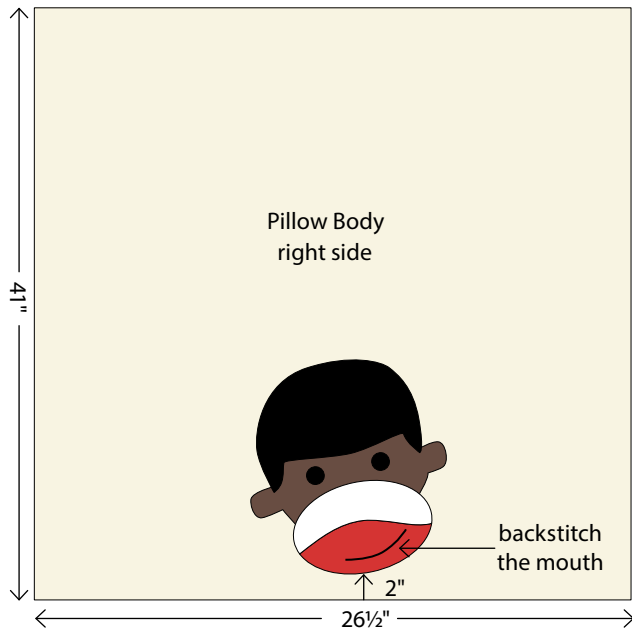


$50\frac{1}{2}$ " x $70\frac{1}{2}$ " unfinished

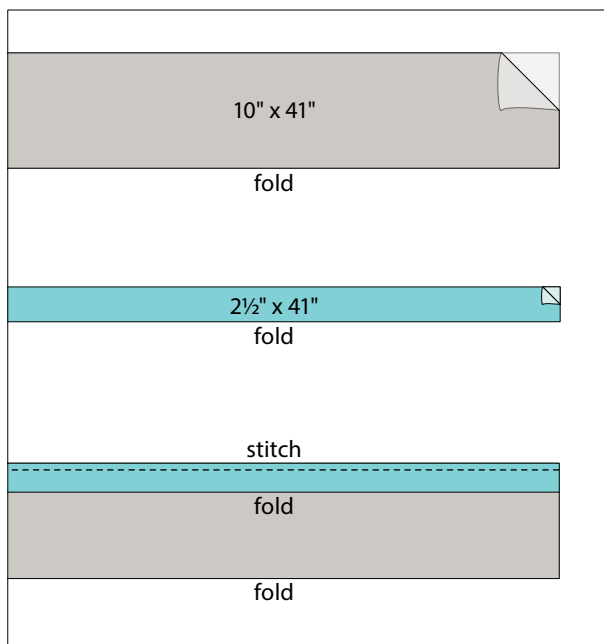
Use 1/2" seams and press in the direction of the arrows.

Pillow Construction

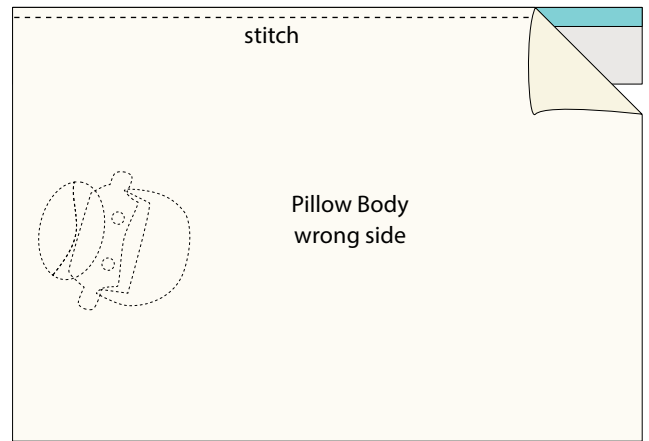
- 1 Peel the paper from the back of the head pieces revealing the fusible. Following the diagram for the assembly order for the head (page T1) noting where the pieces overlap, place all the pieces on the pillow body at least 2" from the edge as shown. Press. Use a blanket stitch and black thread, to appliqué the head.



- 2 Fold the pillow cuff in half lengthwise wrong sides together. Press. Fold the pillow accent in half lengthwise wrong sides together. Press. Layer the cuff and accent together as shown aligning the edges. Baste stitch.

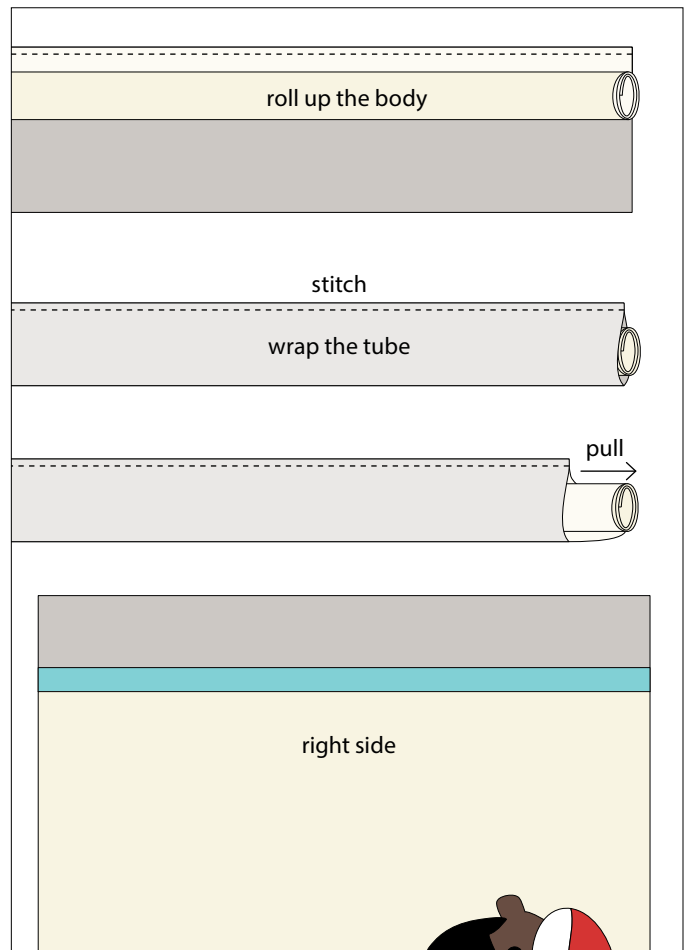


- 3 Layer the pillow body and the cuff/accnt right sides together. Stitch.



moda

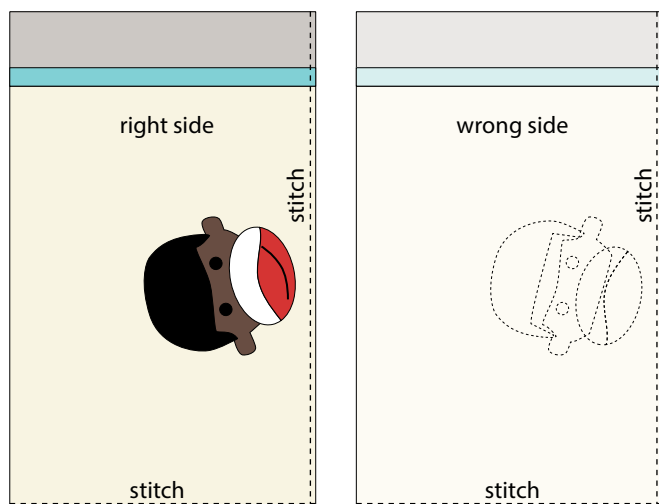
- 4 Roll the pillow body. Enclose the rolled pillow body in the cuff/accnt and stitch, making sure the rolled section is not caught in the stitching. Pull the rolled body from the tube. Press.



MONKEY TALES

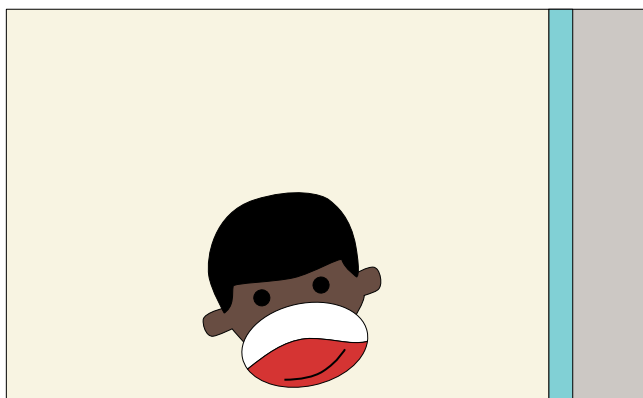
erin michael

- 5 Fold the pillow case in half wrong sides together. Stitch 2 sides using a $\frac{1}{4}$ " seam allowance. Turn the case wrong side out, right sides together. Stitch the same 2 sides using a $\frac{1}{2}$ " seam allowance, enclosing the seams.



moda

- 6 Turn the pillow case right side out. Press.



Pillow case fits a standard size pillow.

Pillow Case is 20" x 30". Quilt is 50" x 70".

Note: The templates pages need to be printed on 11" x 17" paper.

Fabric Requirements

Monkey Face, Body, Arms, and Legs:

15" x width of fabric (15075 17 brown)

Monkey Mouth, and Skateboard:

15" x width of fabric (Bella Solid 9900 123 red)

Monkey Helmet, Eyes, and Wheels:

1 Fat Quarter* (Bella Solid 9900 99 black)

Monkey Mouth, Hands, and Feet:

1 Fat Quarter (Bella Solid 9900 98 white)

Patchwork: 7 assorted Fat Quarters

(15072 40, 15073 31, 15075 20, 26082 11, 9900 75, 9900 85, 9900 255)

Background and Pillow Body:

2½ yards (Bella Solid 9900 60 ivory)

Pillow Cuff: $\frac{1}{3}$ yard (26082 11)

Pillow Accent and Binding: $\frac{5}{8}$ yard (15073 31)

Backing: 3¼ yards (pieced horizontally)

Lightweight Fusible Webbing

*Fat Quarter = 18" x 22"

Monkey Tales features
Monkey Tales by Erin Michael for Moda
and Bella Solids by Moda

moda

MODAFABRICS.COM

WEB15070 — SUGGESTED RETAIL \$6.00

