

BLACKBIRD DESIGNS

Nell's Flower Shop



moda

Nell's Flower Shop

BLACKBIRD DESIGNS

68"x74"

*With the exception of applique pieces, all instructions include seam allowance.
Please read instructions before beginning this project.*



Cutting Directions

To insure fabric yardage please read cutting directions before beginning and cut each piece of fabric in the order given – border strips first, etc. *Important: To avoid confusion and lost pieces, label the parts from each color as they are cut. This will help you sort pieces for the various "rounds".*

FABRIC #1

Fussy cut large sampler (11"x13") from running yardage
From remaining fabric cut:
(2)1½"x WOF strips for "piano key" border and
(4)4½"x4½" squares

2583-11



Large Sampler

FABRIC #2

Cut (2)1¼"x WOF strips
From strips cut (2)1¼"x12½" and (2)1¼"x13" border for sampler block

2586-14



FABRIC #3

Cut (2)1½"x WOF strips
Cut strips into (2)1½"x12½" and (2)1½"x14½" strips for scalloped border
Cut (2)1½"x36½" strips for center borders
Remaining fabric is for applique.

2586-16



FABRIC #4

Cut (2)3½"x WOF strips
From strips cut (2)3½"x12½" and (2)3½"x14½" borders **plus**
(4)3½"x3½" squares

2587-13



FABRIC #5

Cut (6)1½"x WOF strips for checkerboard
Remaining fabric is for applique.

2586-11



FABRIC #6

Refer to cutting diagram. In order to get continuous borders for applique, strips are cut from **length** of fabric, not width.

1. Cut (2)4½"x74½" and (2)4½"x68½" borders from **length** of fabric.
2. Cut (2)1½"x52½" border strips and (2)2½"x44½" border strips then Cut (8)1½"x44" strips for checkerboard and piano keys

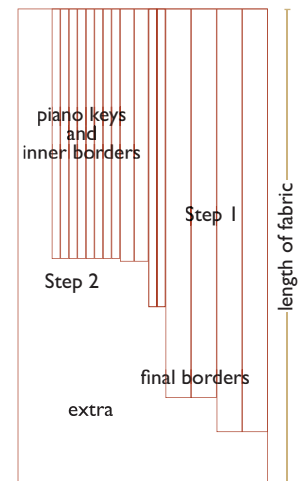
2586-12



FABRIC #7

Cut: (2)7½"x24½" borders and (2)4½"x36½" borders
Cut (2)3½"x WOF strips
From strips cut (12)3½"x6½" rectangles for flying geese

2586-13



Fabric #6 Cutting Diagram

FABRIC #8

Cut (2)3½" x WOF strips then cut into (24)3½" x 3½" squares for flying geese

2580-14

FABRIC #9

Cut (1)2½" x WOF strip – cut into (16)2½" x 2½" squares
Cut (2)1½" x WOF strips for piano keys

2587-12

FABRIC #10 *Fabric is directional. Refer to cutting diagram*

1. First cut (2)11½" x WOF strips
2. Cut (2)11½" x 74½" from **length** of fabric.
3. From remaining fabric cut (6)11½" x WOF strips
Using mitered seams, piece strips from #1 and #3 together then cut: (2)11½" x 68½" border strips for top and bottom borders

2581-12

FABRIC #11

This fabric is for applique. 2587-15

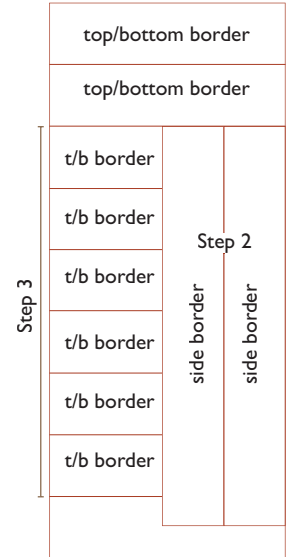
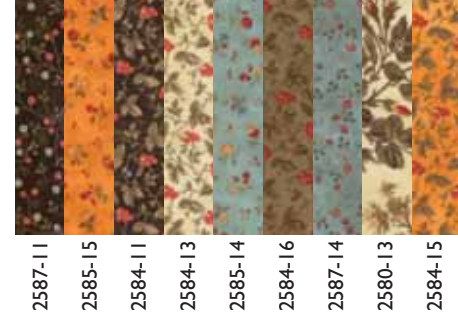
PIANO KEYS

From each of the 9 listed fabrics cut: (2)1½" x WOF strips

BINDING

Cut (8)2¼" x WOF strips. Set aside.

piano key fabrics



Fabric #10 Cutting Diagram

Construction

Nell's Flower Shop is built as a round robin or medallion style quilt – starting with a center block and working outward to the final border.

ROUND 1 – CENTER SAMPLER – Fabrics 1, 2, 3 and 4

- Step 1: Add Fabric #2 blue borders to center sampler block. Sides first then top and bottom.
- Step 2: Use Template A to mark scallop border on Fabric #3 – begin and end ¼" from ends of fabric strip. *See illustration.*
- Step 3: Match edges and baste marked border fabric to matching Fabric #4 border strip.
Applique scalloped border – cutting away fabric as you needle turn scallops.



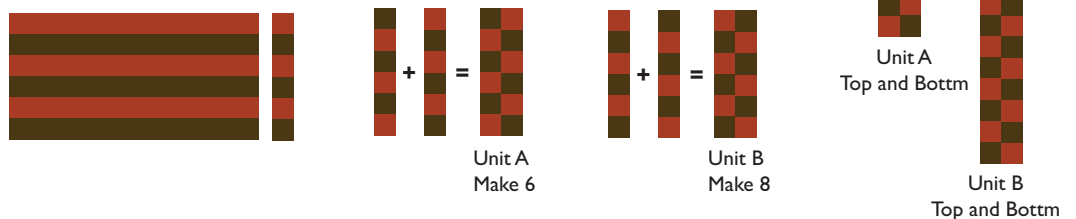
Quilt Should Measure 18½" x 20½"

- Step 4: Add appliqued borders to sides of center block.
- Step 5: Sew a 3½" x 3½" square of Fabric #4 to opposite ends of the remaining appliqued border strips.
Press. Join to top and bottom of center block.

ROUND 2 – CHECKERBOARD BORDER – Fabrics 5 and 6

- Step 1: Sew 2 strip sets of 6 strips – alternate colors. Press seams in one direction. *See diagram.*
- Step 2: Cut (14)1½" segments from **each** strip set. – 28 total
- Step 3: Join 2 segments, **alternating colors**, to make a checkerboard unit A. Make 6 A units.
- Step 4: Join 2 segments, **alternating colors**, to make a checkerboard unit B. Make 8 B units.
- Step 5: Sew 3 A units end-to-end for top border. Press. Add to center block. Repeat for bottom border.
- Step 6: Sew 4 B units end-to-end and add to sides of center block. Press.

2 Quilt Should Measure 22½" x 24½"



ROUND 3 – CENTER BACKGROUND, FLYING GEESSE AND TOP/BOTTOM BORDERS – Fabrics 3, 7 and 8

Step 1: Add 7½"x24½" borders (Fabric 7) to sides of center then add 4½"x36½" borders (Fabric 7) to top and bottom. Press.

Step 2: Fly Geese Blocks

Use 3½"x6½" rectangles and 3½"x3½" squares to make 12 flying geese units.

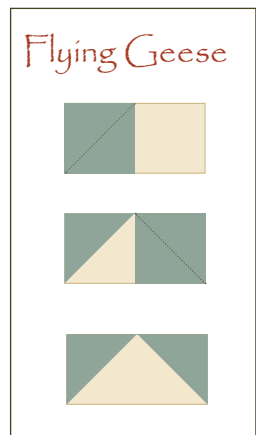
See illustration.

Join 6 flying geese units end-to-end to make top border. Press.

Repeat for bottom border.

Add flying geese borders to center block – blue fabric should face away from center.

Step 3: Add Fabric 3 border strips to top and bottom of center block. Press.



3 Quilt Should Measure
36½"x40½"



ROUND 4 – APPLIQUE FLOWERS – Fabrics 3, 4 and 11

Step 1: Choose your favorite applique method to applique stem, leaves and flowers.

Note: Do not finish appliqueing tips of leaves until piano key border is added.

Unstitch flying geese seam and tuck-in end of lower stems. Re-stitch.

ROUND 5 – PIANO KEY BORDER WITH CORNER SQUARE-IN-SQUARES

“Piano Key” Fabrics **plus** Fabrics 1, 6 and 9

Step 1: Sort the 12 different strips into 3 groups of 4.

Step 2: Make 2 strip sets for each group – 6 total. Press.

Step 3: From **each** strip set cut (7)4½" segments. Total 42 segments (you will use 38).

Step 4: Randomly join segments to make 4 piano key borders. Two with 40 “keys” (strips) and two with 36 “keys”. Press.

Step 5: **Square-in a-Square corner blocks**

Use 4½"x4½" Fabric #1 squares and 2½"x2½" Fabric #9 squares to make 4 corner blocks.

Step 6: Add 40 key borders to sides of center block.

Step 7: Sew corner blocks to opposite ends of the remaining border strips. Press. Join to top and bottom of center block.

5 Quilt Should Measure
44½"x48½"

Square-in a-Square



Square-in a-Square
Make 4



36 Keys



40 Keys



Miter Corners

ROUND 6 – RED BORDERS – Fabrics 6

Step 1: Add 2½" x 44½" border strips to top and bottom of center block. Press.

Step 2: Add 1½" x 52½" border strips to sides. Press.

6 Quilt Should Measure
46½" x 52½"

ROUND 7 – TOILE OUTER BORDER WITH SCALLOPED EDGE – Fabrics 6 and 10

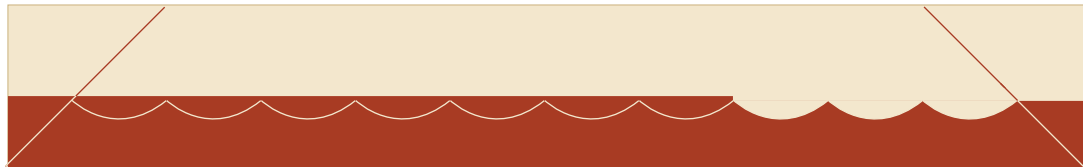
Step 1: Draw 45° miter guide on the ends of red border strips.



Step 2: Use Template B to mark scalloped edge on Fabric #6 – 4½" x 74½" and 4½" x 68½" border strips – begin and end ¼" (at miter guide) from ends of fabric strips.

Align template on **bottom** edge of border strip and then mark scallops.

Step 3: Align fabric edges and baste marked red border fabric to matching Fabric #10 border strip. Applique scalloped border – cutting away fabric as you needle turn scallops.



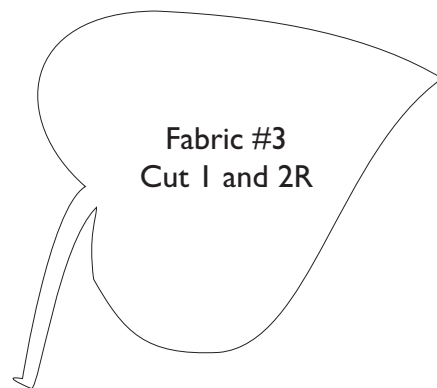
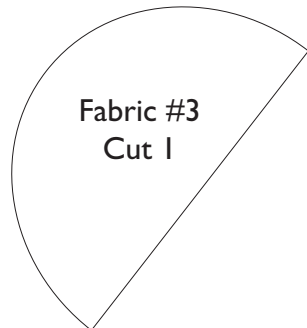
Step 4: Sew shorter borders to top and bottom of quilt. Add side borders. Miter corners. *See illustration.*

Finishing

1. Prepare the binding. Sew binding strips together. Press binding strips in half lengthwise with wrong sides together.
2. To quilt, layer and baste the quilt top, batting and backing.
Quilt by machine or by hand. Apply the prepared binding to quilt.



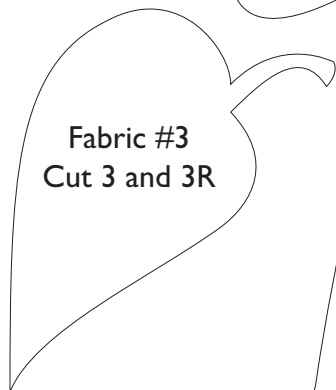
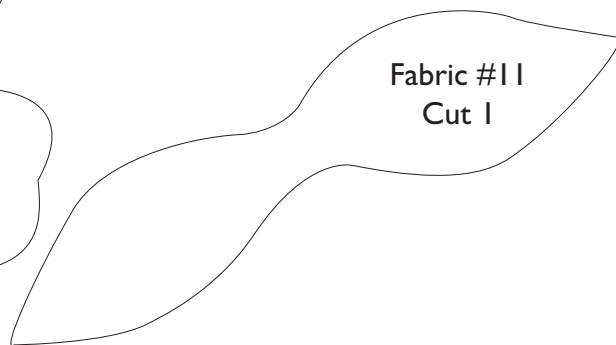
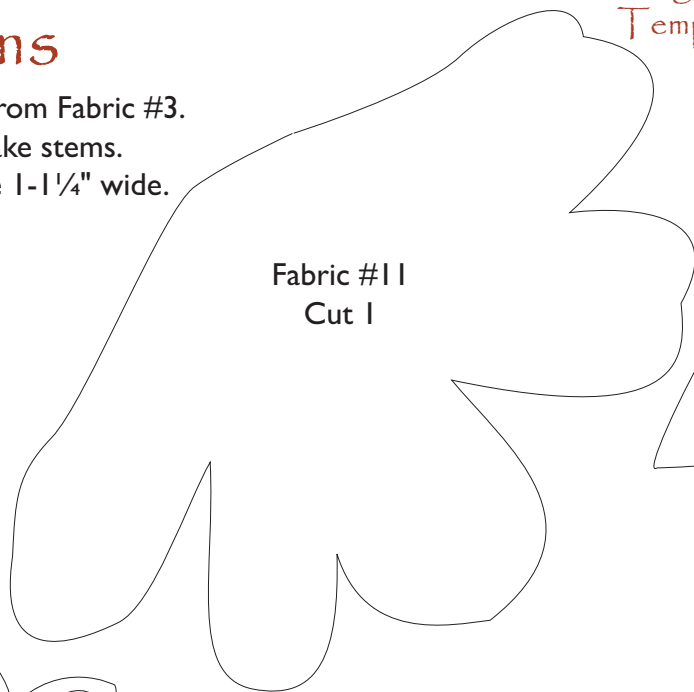
Templates for Nell's Flower Shop

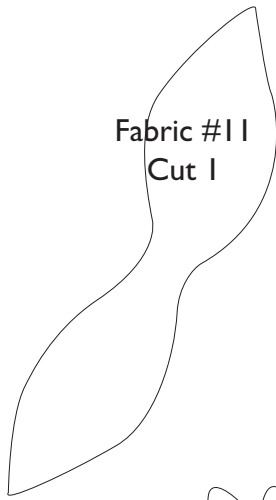


Enlarge Flower and Leaf Templates 200%
Templates do not include seam allowance.

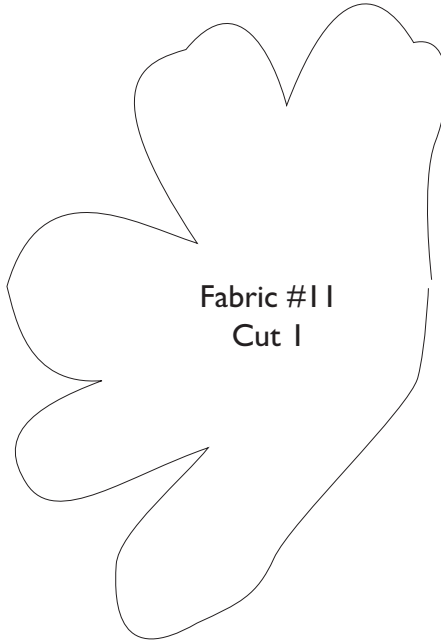
Stems

Cut bias strips from Fabric #3.
Join strips to make stems.
Stems should be 1-1/4" wide.

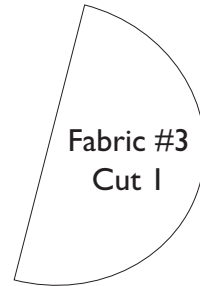




Fabric #11
Cut 1



Fabric #11
Cut 1

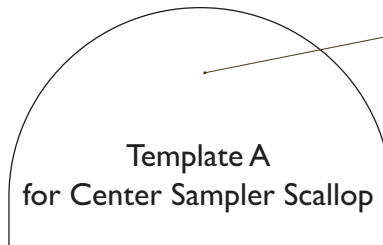


Fabric #3
Cut 1

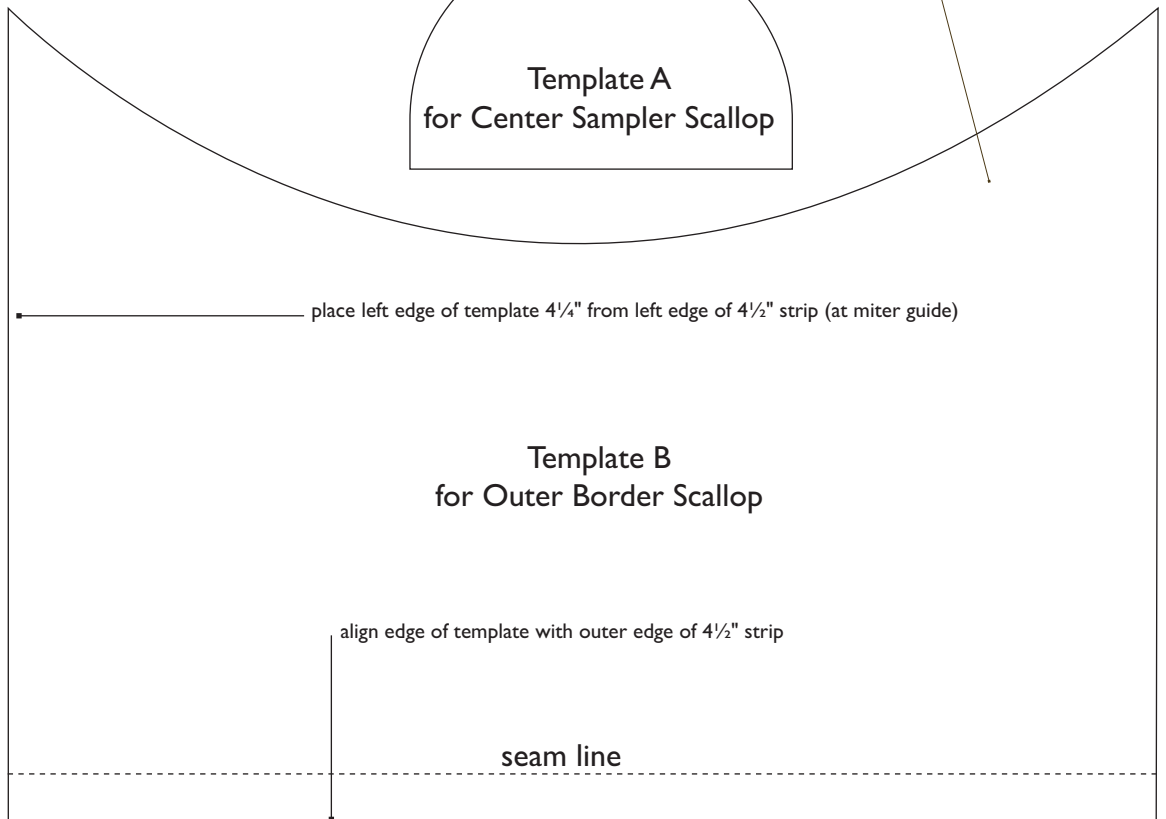


Fabric #5
Cut 1

These templates are actual size.
Do not enlarge.



Template A
for Center Sampler Scallop



Template B
for Outer Border Scallop

BLACKBIRD DESIGNS

Nell's Flower Shop Fabrics

Fabric#1 (2583-11) cross stitch sampler approx. $\frac{3}{4}$ yd.

Note: cut must include large sampler for quilt center plus 9"x WOF for other piecing

Fabric#2 (2586-14) $\frac{1}{4}$ yd.

Fabric#3 (2586-16) 1 yd.

Fabric#4 (2587-13) $\frac{1}{4}$ yd.

Fabric#5 (2586-11) $\frac{1}{2}$ yd.

Fabric#6 (2586-12) $2\frac{1}{3}$ yds.

Fabric#7 (2586-13) 1 yd.

Fabric#8 (2580-14) $\frac{1}{3}$ yd.

Fabric#9 (2587-12) $\frac{1}{4}$ yd.

Fabric#10 (2581-12) $2\frac{7}{8}$ yd.

Fabric#11 (2587-15) $\frac{1}{4}$ yd.

Piano Key Border $\frac{1}{8}$ yd. each

2587-11, 2585-15, 2584-11, 2584-13, 2584-15

2584-16, 2587-14, 2580-13, 2585-14

Backing $4\frac{1}{2}$ yds.

Batting 74"x80"

Binding $\frac{1}{2}$ yd.

moda

PS 2580 — SUGGESTED RETAIL \$2.00