

MADE with love

Quick Sew Pre-quilted Bag

This simple bag design can be used with any of your favorite pre-quilted prints for a quick and easy project.

Bag is 21½" x 22".

Supplies

Bag, Straps & Pockets: 1¼ yards
Pocket Accent & Binding: ⅞ yard

Cutting

Bag, Straps & Pockets: (see diagram)

1-43" x width of the fabric

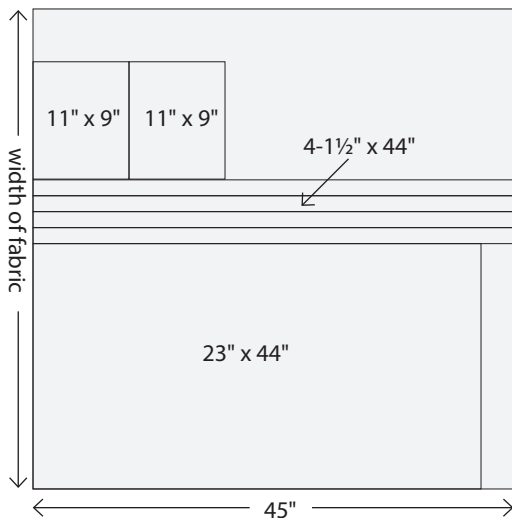
subcut 1-23" x 44" (Bag)

4-1½" x 44" (Straps)

2-11" x 9" (Pockets)

Binding:

11-2½" x width of the fabric strips



moda

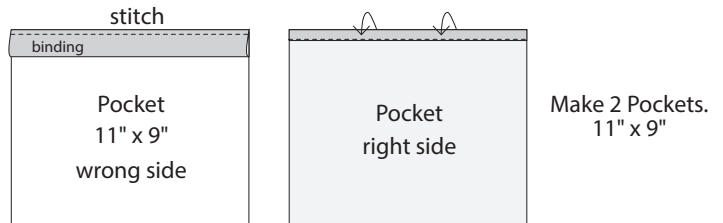
Bag Construction

- 1 Binding:** Sew the 11-2½" x width of fabric strips end to end. Press the strip in half wrong sides together.

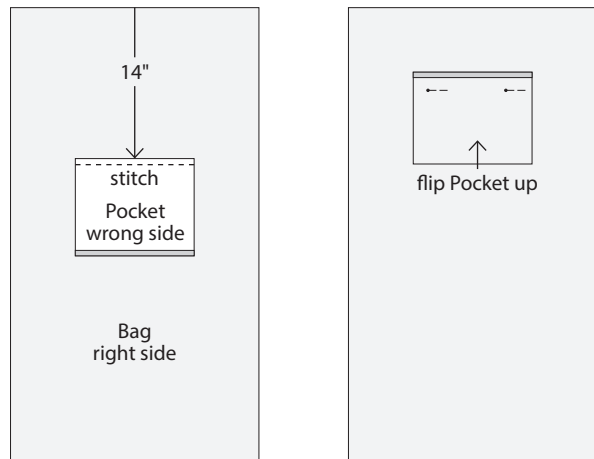


Press strip in half wrong sides together.

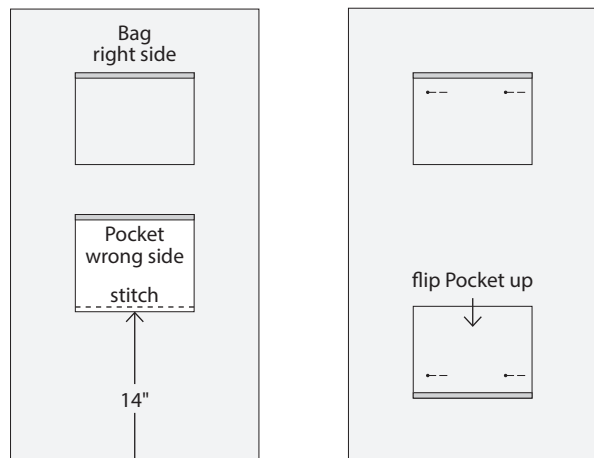
- 2 Pockets:** Cut 2-11" long strips from the binding. Stitch a binding strip to the wrong side of the top of the pocket using a ¼" seam allowance. Fold to the right side of the pocket. Top stitch in place. Make 2 pockets.



- 3 Add Pockets**
 - (A)** Center the bottom of a pocket 14" from the edge of the bag front, right sides together. Stitch using a ½" seam allowance. Flip up and pin in place.

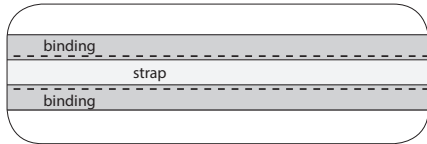


- (B)** Center the bottom of the second pocket 14" from the edge of the bag front, right sides together. Stitch using a ½" seam allowance. Flip up and pin in place.

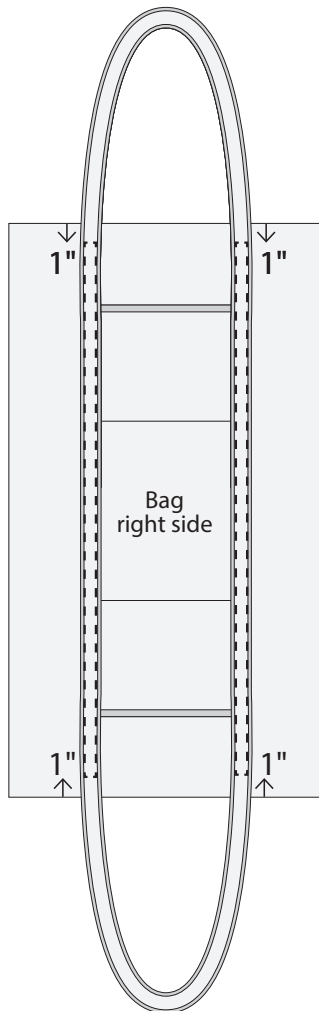


4 Straps

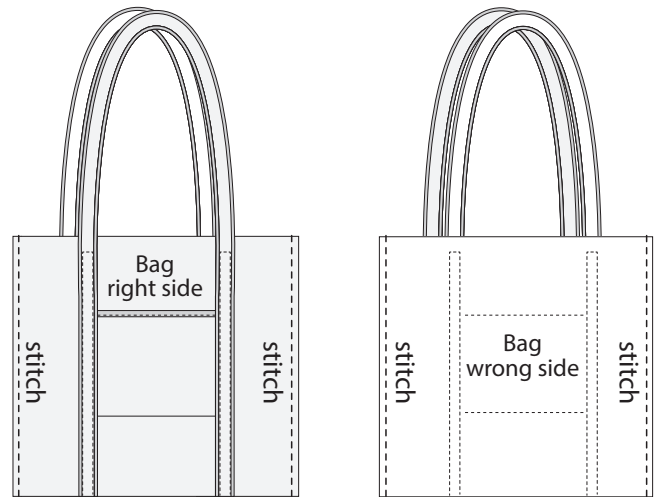
- (A) Sew the 4-1½" x width of fabric straps end to end. First sew the ends together, wrongs sides together, using a ½" seam allowance. Trim the seam to ¼". Turn the straps, right sides together, use a ½" seam allowance to enclose the previous seam. Repeat until you have one long strap.
- (B) **Bind both sides of the Strap:** Stitch a binding strip to the wrong side of the strap using a ¼" seam allowance. Fold the binding to the right side of the strap. Top stitch in place. Sew the ends of the strap together to make a big loop. The remaining binding will be used to bind the top of the bag.



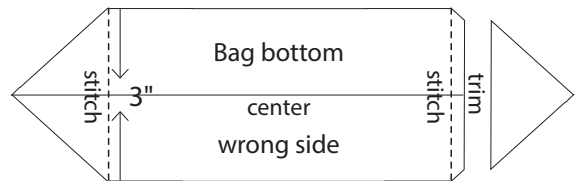
- (C) Center the strap on the front of the bag making sure the sides of the pockets are covered by the strap. Stitch the strap to the bag along the edge of the binding. *Stop sewing 1" from the edges of the bag, sew across the strap then down the other side.* Repeat on the other side of the strap.



- 5 Fold the bag in half, wrong sides together, sew the sides using a ½" seam allowance. Trim the seams to ¼". Turn the bag, right sides together, use a ½" seam allowance to enclose the previous seams.



- 6 **Bag Bottom:** Pinch the bottom corner of the bag. Measure 3" across the bottom and sew. Trim ½" from the seam line. Repeat on the other corner.



moda

- 7 **Finish the Bag:** Turn the bag right side out. Use the remaining binding to bind the top of the bag. Stitch to the wrong side of the bag using a ¼" seam allowance. Fold the binding to the right side of the bag. Top stitch in place.

