



60"x64" finished

# Recipe for Friendship

*moda*

**ME** MARY ENGELBREIT



©ME Ink

# Recipe for Friendship

60"x64" finished



## Quilter Basics

- Read instructions before beginning a project.
- All instructions include a ¼" seam allowance.
- Press as you go. Press seams in one direction.

## Cutting:

### Panel

See instructions on right

### Yellow Border

Cut 3-3½"x WOF strips

### Red Border

Cut 4-3"x WOF strips  
subcut 2-3"x 26½" borders  
2-3"x 25½" borders

### Checkerboard & Binding

Cut 10-2½"x WOF strips  
set aside 7 for binding  
Subcut 3-2½"x 22" strips  
for checkerboard from  
remaining strips

### Checkerboard Squares

From EACH of 11 prints  
Cut 2-2½"x 22" strips

### Stripe Border

Cut 5-3½"x WOF strips

### Prairie Points

Cut 6-3½"x WOF strips  
subcut 62-3½"x 3½" squares  
Cut 2-2½"x WOF strips  
subcut 2-2½"x 22" strips  
for checkerboard

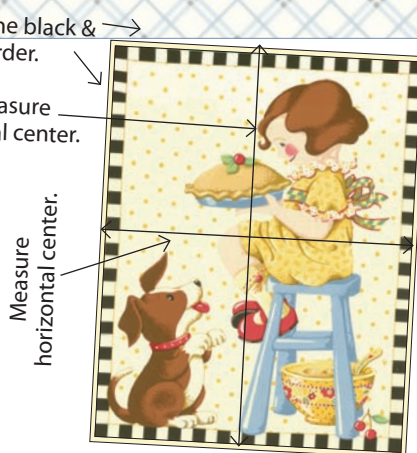
### Final Border

Cut 4-8½"x length of fabric strips  
then cut 2-8½"x 60½" borders  
and 2-8½"x 48½" borders

## Construction:

### Trim center panel

**1** Trim center Recipe for Friendship panel ¼" from the black and white border. Measure the vertical center of the panel. This measurement will be used in the next step.



**2** Cut two yellow borders 3½"x panel vertical center measurement. Add to the sides of the panel. *Always press away from the panel.* Measure quilt, including border, across horizontal center. Cut two yellow borders 3½"x horizontal center measurement. Sew to the top and bottom of the panel. Trim the quilt top to measure 21½"x 25½".

3½"x horizontal center measurement

3½"x panel vertical measurement



Add side borders first then top and bottom borders.



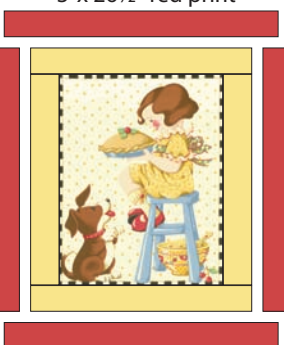
21½"x 25½"  
with seams

Trim quilt to measure 21½"x 25½".

**3** Add 2-3"x 25½" red borders to the sides of the quilt. Press away from the panel. Add the 2-3"x 26½" red borders to the top and bottom.

3"x 26½" red print

3"x 25½" red print



Add side borders.  
Add the top & bottom borders

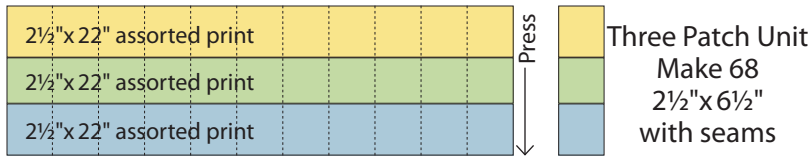


Quilt center  
should measure  
26½"x 30½"  
with seams



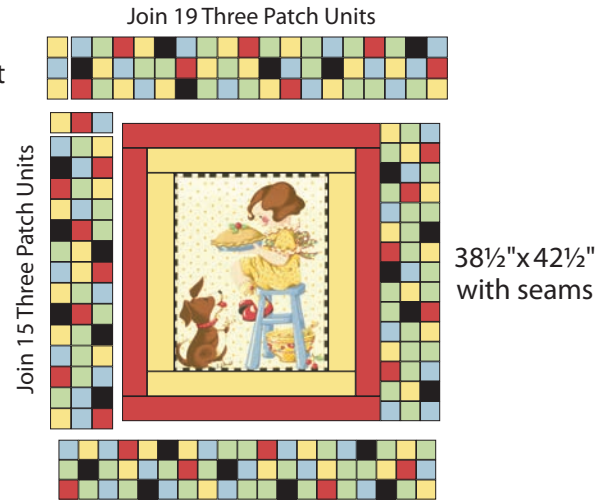
moda

- 4 Using a total of  $27-2\frac{1}{2}'' \times 22''$  strips from 13 assorted prints make 9 strip sets of 3 prints. Press in one direction. Cut into  $2\frac{1}{2}''$  wide segments. **Make 68 Three Patch units.**

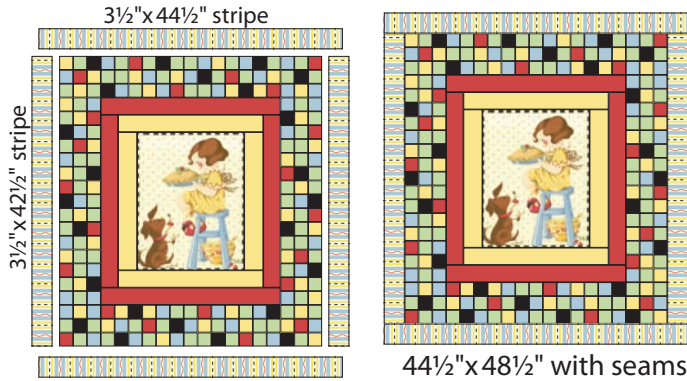


Join 3 assorted strips. Make 9 strip sets.  
Cut into  $2\frac{1}{2}''$  wide units.

- 5 Join two sets of 15 Three Patches. Sew to the sides of the quilt. Flip the three patches so the seams are in opposite directions when sewing them together. Join two sets of 19 Three Patches. Sew to the top and bottom of the quilt.

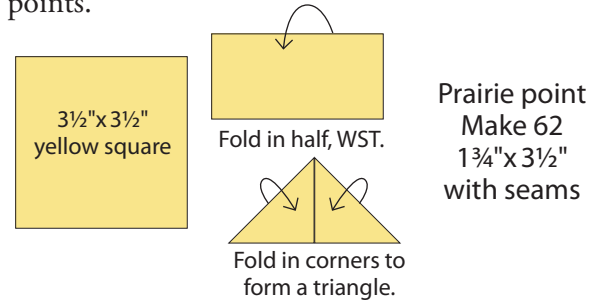


- 6 Add  $2-3\frac{1}{2}'' \times 42\frac{1}{2}''$  stripe borders to the sides of the quilt. Press away from the panel. Add  $2-3\frac{1}{2}'' \times 44\frac{1}{2}''$  stripe borders to the top and bottom.

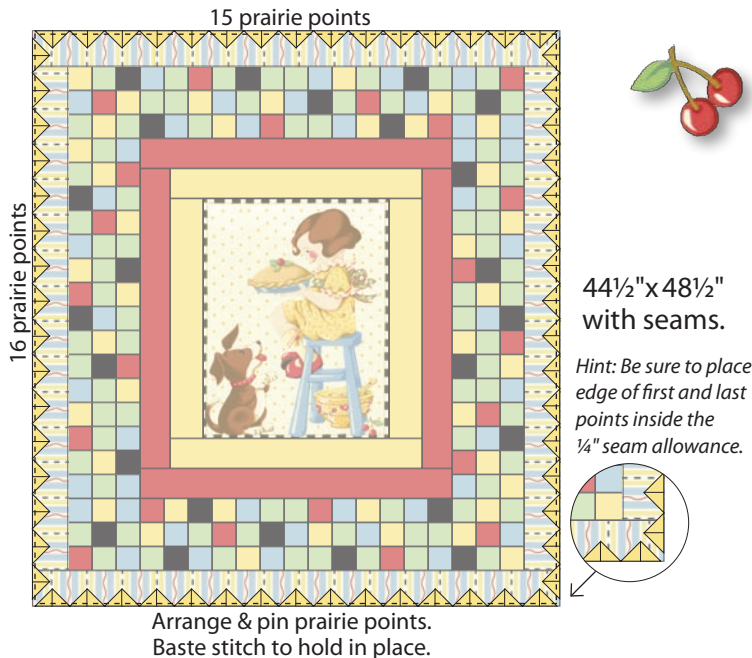


### Make Prairie Points

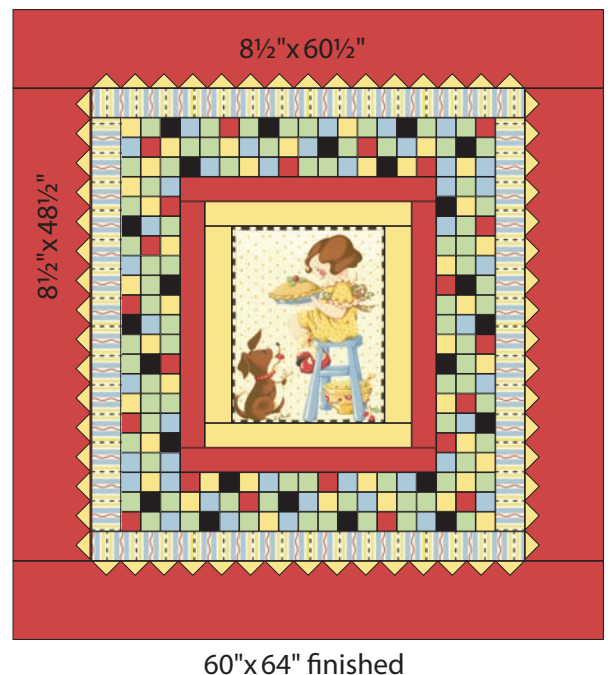
- 7 Use  $62-3\frac{1}{2}'' \times 3\frac{1}{2}''$  yellow squares to make the prairie points. Fold each square in half wrong sides together and press. Fold the corners to center to form a triangle. Press. Make 62 prairie points.



- 8 Starting at the center of the borders, distribute the prairie points evenly along the edge of the quilt top. *The point side with the fold will be facing the center.* Add 16 points to the sides and 15 points to the top and bottom. *The points may overlap.* Pin in place. Use a basting stitch to hold the prairie points in place.



- 9 Being sure to include the prairie points, sew the  $2-8\frac{1}{2}'' \times 48\frac{1}{2}''$  borders to the sides of the quilt top then add the  $2-8\frac{1}{2}'' \times 60\frac{1}{2}''$  top and bottom borders. Press prairie points toward border.



# Recipe for Friendship

©ME Ink

60"x64" finished



## FABRIC REQUIREMENTS



### Panel – Center

18020-11

2/3 yard— approx.



### Yellow Border

18025-12

1/3 yard



### Red Border

18029-11

1/2 yard



### Checkerboard & Binding

18024-25

3/4 yard



### Stripe Border

18027-15

5/8 yard



### Prairie Points

18029-12

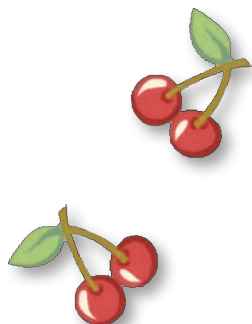
7/8 yard



### Final Border

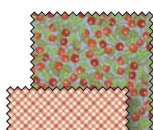
18021-11

1 7/8 yards (border cut length of fabric)

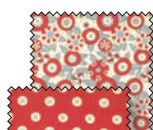


## CHECKERBOARD SQUARES

7"x22" of EACH of the following:



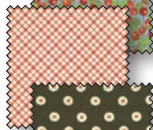
18022-15



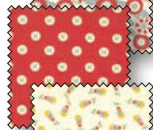
18023-27



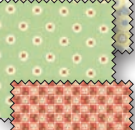
18023-29



18024-21



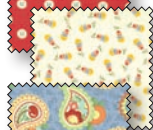
18025-11



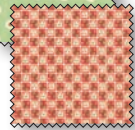
18025-13



18025-16



18026-17



18028-11



18029-26



18021-15

**Backing** 4 yards



moda

PS18020 — SUGGESTED RETAIL \$3.00

[www.modafabrics.com](http://www.modafabrics.com)