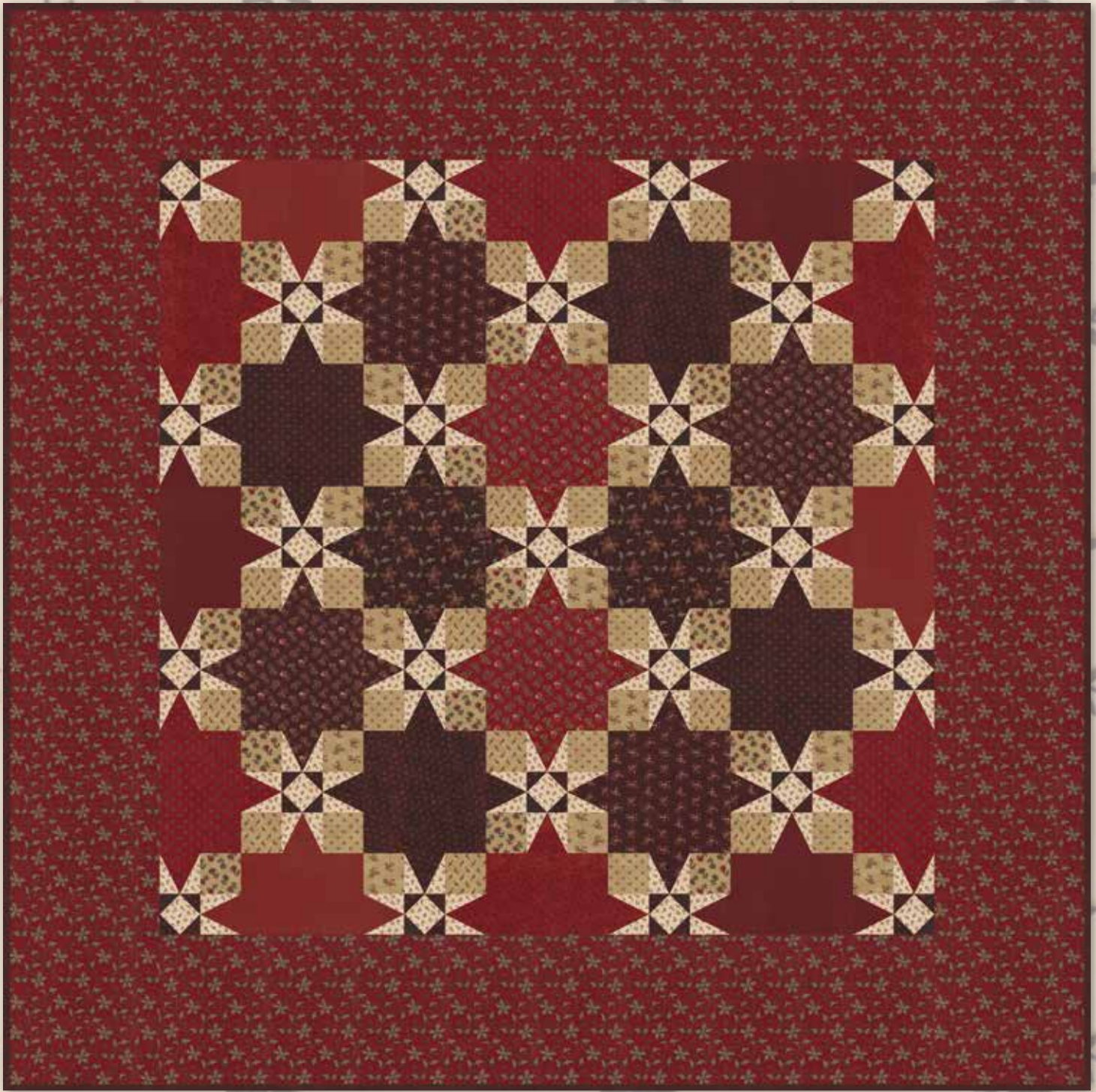


modern



RICHMOND REDS

Barbara Brackman

RICHMOND REDS

Barbara Brackman

Quilters Basics

*Read instructions before beginning a project.
All instructions include a 1/4" seam allowance.
Press as you go. Press seams in one direction
22" measurement is approximate.*

Cutting

Note: Label pieces as they are cut.

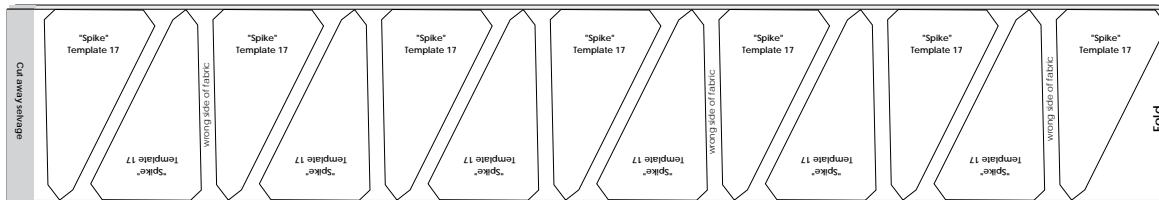
Fabric 1-1 1/4 yds.

Cut 3-3 1/2" x WOF strips

Subcut 25-3 1/2" x 3 1/2" squares for Square in a Square Center Block

Cut 7-3 5/8" x WOF strips

Fold strips in half right sides together and cut away selvages. Using Template 17 from Marti Michell Template Set C cut 13 pairs of "Spike" triangles from **each** folded strip. *See diagram below.* You will cut 91 pairs, but will use 84. Seven are extra and can be used to practice piecing.



Fold strip in half right sides together. Cut away selvages. Use Template 17 to cut 13 pairs of "Spike" triangles. Repeat with remaining strips.

Fabric 2 1/2 yd

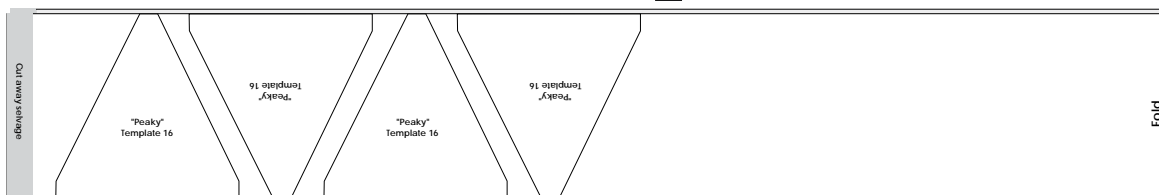
Cut 1-9 1/2" x WOF strip

Subcut 2-9 1/2" x 9 1/2" squares for alternate blocks

From the remainder of strip cut 3-2" x 22" strips. Subcut 25-2" squares for Square in a Square center block corners.

Cut 1-3 1/2" x WOF strip

Fold strip in half right sides together and cut away selvages. Using Template 16 from Marti Michell Template Set C cut 4 pairs of "Peaky" triangles. *See diagram below.*



Fold strip in half right sides together. Cut away selvages. Use Template 16 to cut 4 pairs of "Peaky" triangles.

Fabric 3 FQ

Cut 3-2" x 22" strips

Subcut 25-2" squares for Square in a Square center block corners.

Cutting-cont.

Fabric 4 ½ yd

Cut 1-9½"xWOF strip

Subcut 2-9½"x9½" squares for alternate blocks
From the remainder of strip cut 3-2"x22"
strips. Subcut 25-2"x2" block corners for
Square in a Square center blocks.

Cut 1-3½"xWOF strip

Fold strip in half right sides together and cut
away selvage. Using Template 16 cut 4 pairs of
"Peaky" triangles. See diagram, page 2.

Fabric 5 ⅞ yd

Cut 2-2"xWOF strips

Subcut 25-2"x2" block corners for Square in a
Square center blocks

Cut 9-2½"xWOF strips for binding

Fabrics 6, 7, 8, 9 ¼ yd each

Cut 2-3½"xWOF strips from each fabric

Subcut 20-3½"x3½" squares for 9-patch
corner squares you will have 2 extra of each.

Fabrics 10, 11, 12, 13 ⅜ yd. each

Cut 1-9½"xWOF strip from each fabric

Subcut 2-9½"x9½" squares for alternate blocks
From the remainder of strip cut 2-3½"x22" strips.
Using Template 16 cut 8 "Peaky" triangles

Fabrics 14, 15, 16, 17 ⅜ yd. each

Cut 1-6½"xWOF strip from each fabric

Subcut 3-6½"x9½" rectangles for alternate
blocks

Cut 1-3½"xWOF strip

Fold strip in half right sides together and cut
away selvages. Using Template 16 cut 5 pairs of
"Peaky" triangles you will have 1 extra of each.

Fabric 18 2¾ yds

Cut 8-11½"xWOF strips for border

moda

Construction

Square in a Square Center Blocks – Make 25

Each block requires 1-3½" Fabric 1 bkgd. square and 1-2" square each from Fabrics 2, 3, 4 and 5.

Refer to the **Easy Corner Triangle** diagram below to make one Square in a Square Center Block.

Block should measure 3½"x3½" with seams. Repeat steps to make a total of 25 Square in a Square Center Blocks.

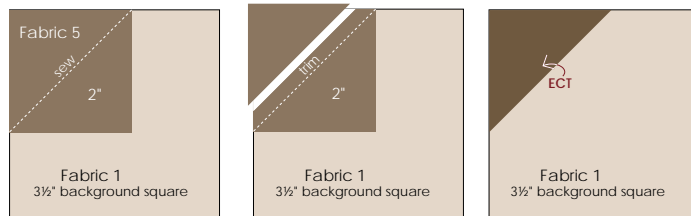
How to Make Easy Corner Triangles – ECTs

Step 1 Draw a diagonal line from corner to corner on the wrong side of 2" squares. With right sides together align edges of marked square and 3½" background Fabric 1 square. Note direction of marked line. Stitch on the marked line.

Step 2 Trim ¼" from the sewn line. Trim excess fabric from the small square only; do not cut away the background. This will help keep units square.

Step 3 Press to the corner to form a triangle.

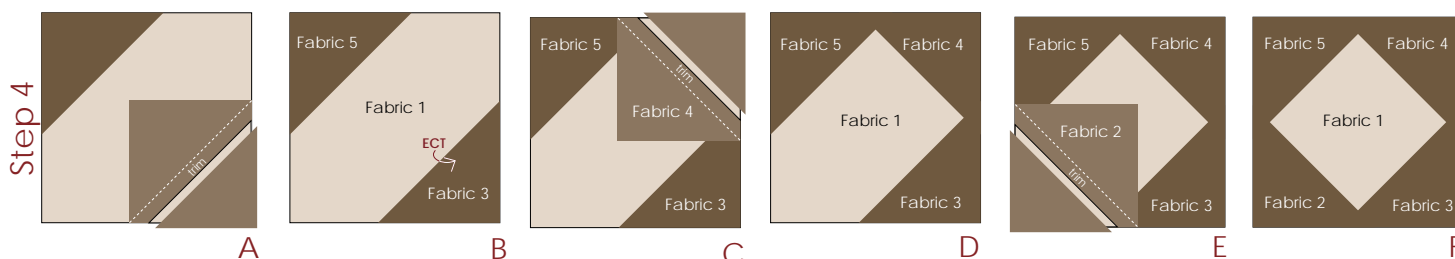
Step 4 Repeat for three remaining corners.



Step 1

Step 2

Step 3



Step 4

A

B

C

D

E

F

Block should measure 3½"x3½" with seams

Construction-cont.

Star Point Blocks – Make 84

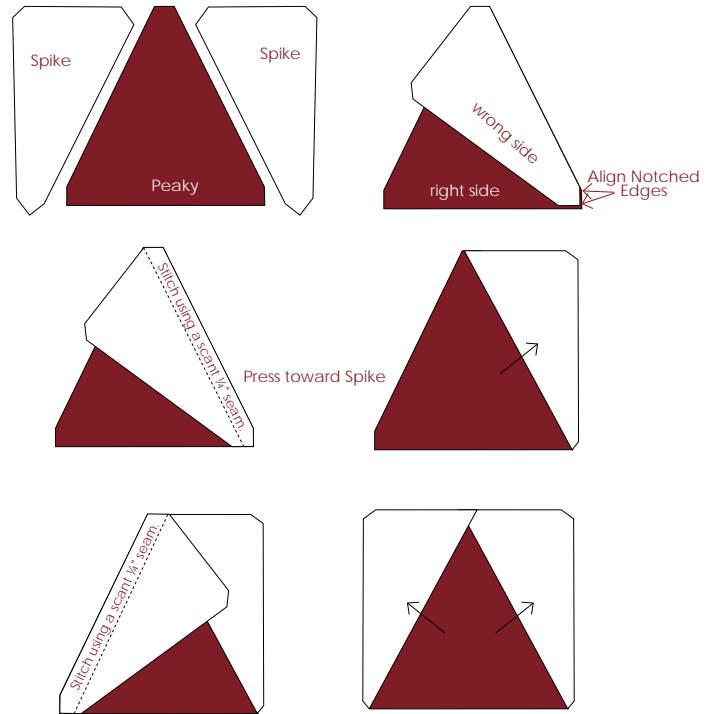
Each block requires: 1–Peaky triangle and 2 Fabric 1 Spike triangles. All Spike triangles use Fabric 1.
Peaky triangles: Use (8) Fabric 2, (8) Fabric 4, (8) Fabric 10, (8) Fabric 11, (8) Fabric 12, (8) Fabric 13, (9) Fabric 14, (9) Fabric 15, (9) Fabric 16, (9) Fabric 17.

1. With right sides together align notches edges of a Peaky triangle and one of the Spike side triangles. Press seam toward Spike. See diagram at right. **Note: It is important that the block measures $3\frac{1}{2}$ "x $3\frac{1}{2}$ ".**

We suggest using a scant $\frac{1}{4}$ " seam, but practice sewing with the extra Peaky and Spike pieces to determine the best seam width to achieve the $3\frac{1}{2}$ " measurement.

2. Add the remaining Spike triangle to the opposite side of the block. Press toward Spike. Block should measure $3\frac{1}{2}$ "x $3\frac{1}{2}$ " with seams.

3. Repeat steps to make 84 Star Point blocks.



Make 84

Block should measure $3\frac{1}{2}$ "x $3\frac{1}{2}$ " with seams

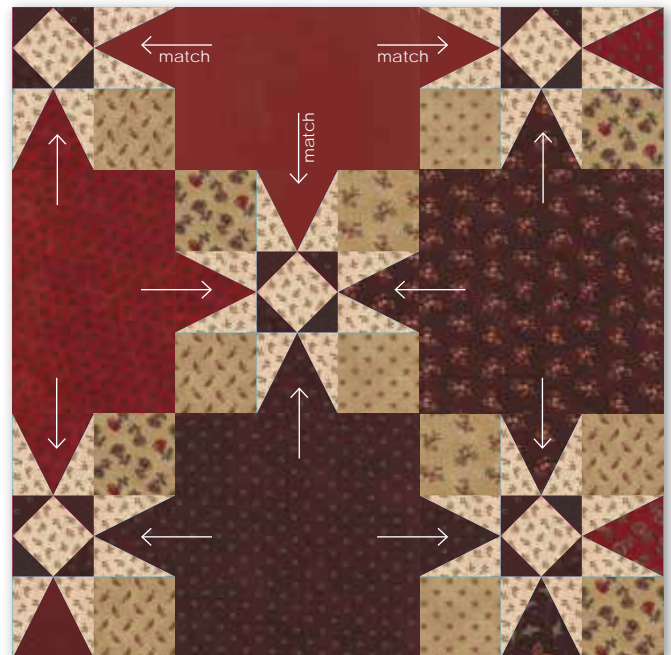
moda

Assemble Blocks – Assemble Quilt

Because of specific fabric placement in this quilt, lay out the entire quilt on the floor or a design wall before you piece the Star blocks and assemble the quilt top.

The pieced Star blocks each include 4 different Star Point Blocks. The Peaky triangle in each block needs to match the alternate block that is next to it. *Note arrows in example at right.*

Begin the layout by arranging the $9\frac{1}{2}$ "x $6\frac{1}{2}$ " alternate blocks around the outside forming a large square. Leave space for pieced blocks in between. Arrange the remaining alternate blocks in the center of the quilt. Refer to quilt assembly diagram on the next page for fabric placement.



Assemble Blocks – Assemble Quilt -cont.

Place Star Point Blocks adjacent to a matching alternate block. Add Square in a Square blocks to center of pieced block. Then add 4 assorted corner squares to layout. Piece the Star blocks one at a time. Pieced Star block should measure $9\frac{1}{2}'' \times 9\frac{1}{2}''$ with seams. Press toward arrows. When all Star blocks are pieced, join pieced and alternate blocks into 7 rows of 7 blocks. Press even rows to the left and odd rows to the right.



Quilt center should measure $57\frac{1}{2}'' \times 57\frac{1}{2}''$ with seams.

Pieced Star Block should measure $9\frac{1}{2}'' \times 9\frac{1}{2}''$ with seams

Border

Join 8 border strips into 4 pairs. Press seams open.

1. Measure quilt center from top to bottom through the center. Cut 2 borders from the pieced strips to that measurement. Add prepared strips to opposite sides of quilt. Press seams toward border.

2. Measure quilt top from side to side through the center including the borders. Cut 2 borders from remaining strips to that measurement. Add prepared strips to top and bottom of quilt. Press seams toward border.

Quilt top should measure $79\frac{1}{2}'' \times 79\frac{1}{2}''$ with seams.



Quilt top should measure $79\frac{1}{2}'' \times 79\frac{1}{2}''$ with seams

Finishing

1. Using a diagonal seam, join the $9 - 2\frac{1}{2}'' \times \text{WOF}$ strips end to end. Press seams open. Fold prepared strip in half wrong sides together and press to make the binding.

2. Layer, Quilt and Bind.

moda

moda

Finished Quilt 79"x79" Finished Block 9"x9"

RICHMOND REDS

Barbara Brackman

Richmond Reds reproduces the brick reds, pinks and chocolate browns of the nineteenth century, the stuff of everyday wardrobes, scrapbags and calico quilts. You'll find tossed blossoms, sprigs and floral trails, reproduced in the warm shades traditionally obtained from madder dyes.

The collection is named for Richmond, Virginia, where historic brick buildings add similar color to the city's architectural heritage.

For ease of cutting fabrics are arranged by yardage requirements from smallest to largest.

Fabric 3



FQ

8306-20

Fabric 6



1/4 Yd

8303-13

Fabric 7



1/4 Yd

8307-12

Fabric 8



1/4 Yd

8301-12

Fabric 9



1/4 Yd

8302-12

Fabric 10



3/8 Yd

8301-16

Fabric 11



3/8 Yd

8303-17

Fabric 12



3/8 Yd

8303-16

Fabric 13



3/8 Yd

8300-15

Fabric 14



3/8 Yd

8306-15

Fabric 15



3/8 Yd

8302-15

Fabric 16



3/8 Yd

8304-14

Fabric 17



3/8 Yd

8305-16

Fabric 2



1/2 Yd

8302-16

Fabric 4



1/2 Yd

8304-17

Fabric 5



7/8 Yd

8305-17

Fabric 1



1 1/4 Yds

8304-11

Fabric 18



2 3/4 Yds

8300-14

Backing - 5 Yds

Note: An additional 3/8 yard is needed if joining border strips with a bias seam.

Also needed:

Marti Mitchell's *Perfect Patchwork Template Set C*. Pieces 16 & 17 (Peaky and Spike)

Stock #8253 Mitchell Marketing

Olfa 18mm Rotary Cutter (#9657Olfa) for cutting around templates

moda

MODAFABRICS.COM

PS8300 — SUGGESTED RETAIL \$6.00