

*moda*



# *Symphony*

Size: 64" x 64"

Sentimental Studios



# Symphony

Sentimental Studios

Size: 64" x 64"

## Quilter Basics

Read instructions before beginning a project. All instructions include a 1/4" seam allowance. Press as you go. Press seams in one direction.

## Cutting



**Center square A . . .** 15850-12  
Cut 2-8 1/2" x WOF strips  
Subcut 8-8 1/2" x 8 1/2" squares



**Center square B . . .** 15852-12  
Cut 2-8 1/2" x WOF strips  
Subcut 8-8 1/2" x 8 1/2" squares



**Half circle A . . . . .** 15853-12  
Using enclosed template.  
Cut 32 half circles



**Half circle B . . . . .** 15854-14  
Using enclosed template.  
Cut 32 half circles



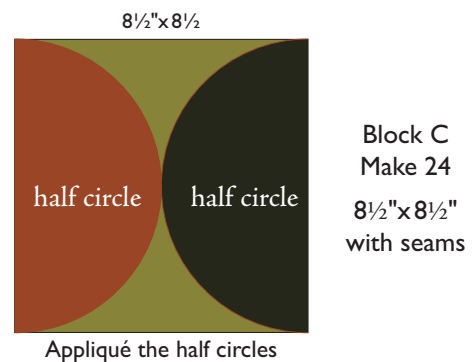
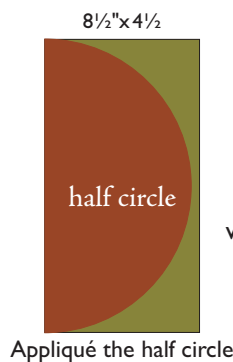
**Accent background** 15856-25  
Cut 7-8 1/2" x WOF strips  
Subcut 24-8 1/2" x 8 1/2" squares  
16-8 1/2" x 4 1/2" rectangles



**Background & Binding . .** 15857-12  
Cut 4-8 1/2" x WOF strips  
Subcut 9-8 1/2" x 8 1/2" squares  
12-8 1/2" x 4 1/2" rectangles  
4-4 1/2" x 4 1/2" squares  
Cut 7-2 1/2" x WOF strips (binding)

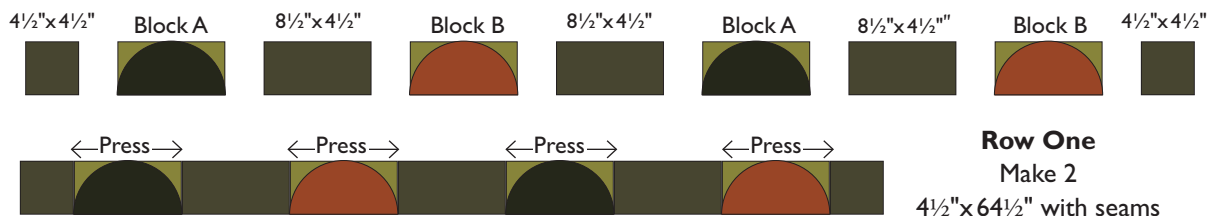
## Construction

**1** There are 3 types of appliqué blocks: use your appliqué method of choice to appliqué one Half Circle A to 1-8 1/2" x 4 1/2" accent background rectangle. Make 8 Block As. Appliqué one Half Circle B to 1-8 1/2" x 4 1/2" accent background rectangle. Make 8 Block Bs. Appliqué one Half Circle A and Half Circle B to 1-8 1/2" x 8 1/2" accent background square. Make 24 Block Cs.



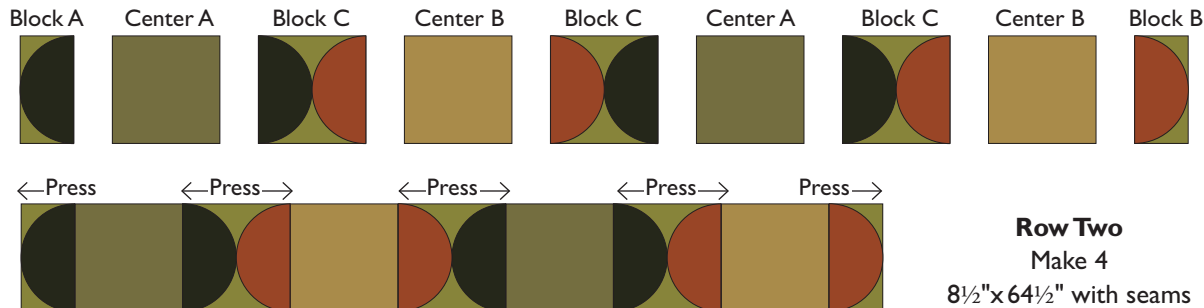
## Assembly

**2** Three rows combined are needed to make the quilt top. **Row One:** Sew 2 Block As, 2 Block Bs, 2-4 1/2" x 4 1/2" and 3-8 1/2" x 4 1/2" backgrounds together. See diagram for placement. **Make 2 Row Ones.**

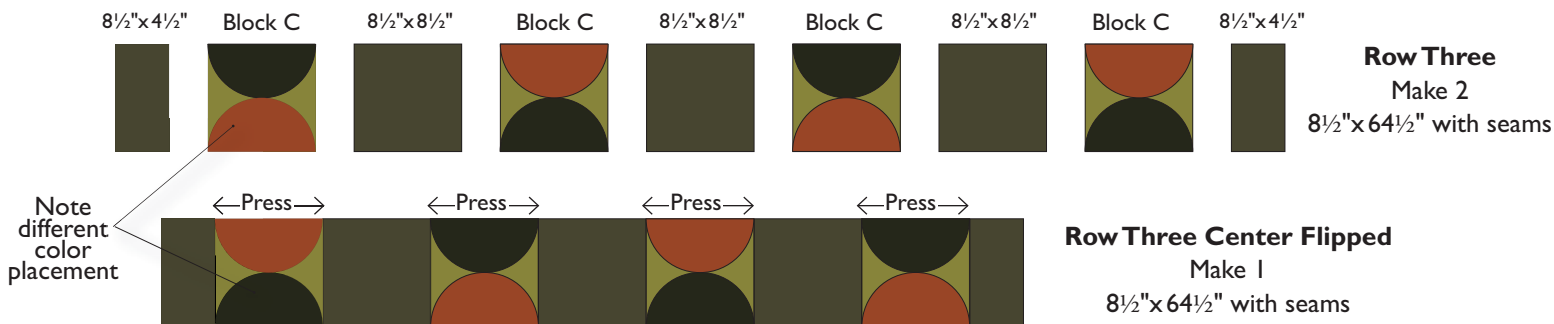


## Assembly continued

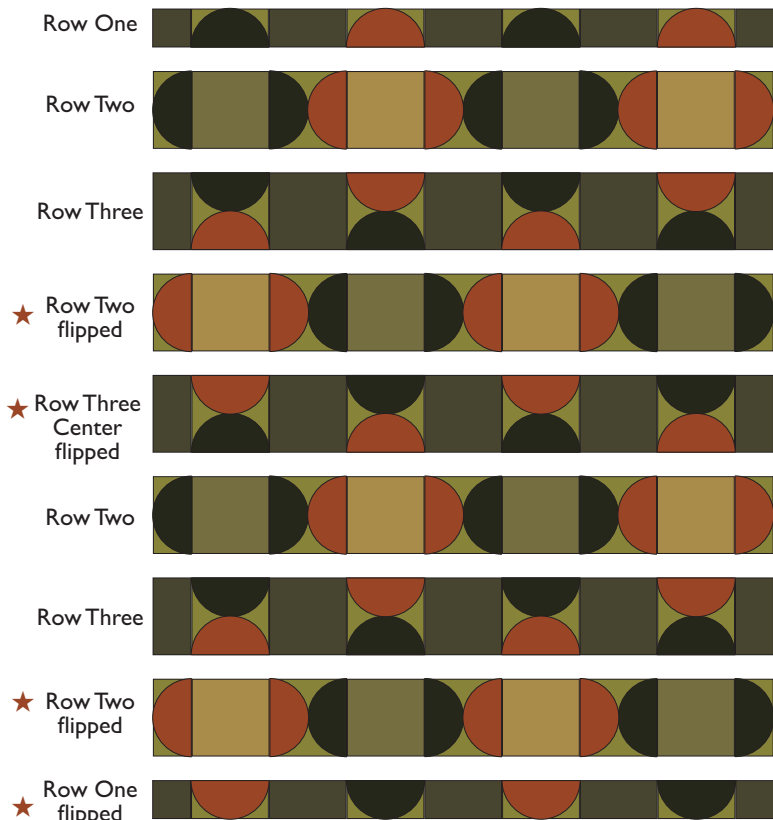
- 3** To make **Row Two**: Sew 1 Block A, 1 Block B, 3 Block Cs, 2-8½"x 8½" Center square As and 2-8½"x 8½" Center square Bs together. See diagram for placement. **Make 4 Row Twos.**



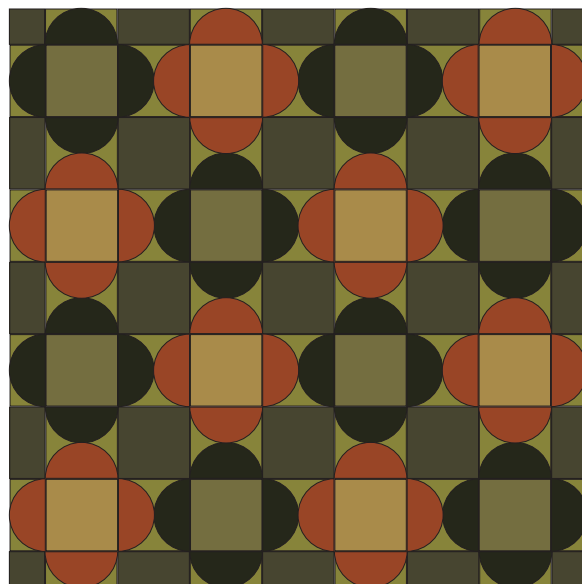
- 4** To make **Row Three**: Sew 4 Block Cs, 2-8½"x 4½" and 3-8½"x 8½" backgrounds together. See diagram for placement. **Make 2 Row Threes** and **1 Row Three Center Flipped**, see below.



- 5** Assemble the quilt top by joining the 2 Row Ones, 4 Row Twos and 3 Row Threes.



- 6** Layer, quilt, bind and ENJOY!



64"x 64" quilt



moda  
www.modafabrics.com

# Symphony

Size: 64" x 64"

by Sentimental Studios

The Symphony collection is rich and bold with intricate patterns and beautiful line work. The quilt uses large blocks and half circles to highlight the group's palette of deep, elegant blacks combined with robust reds and eggplant purples that would even strike a chord with Beethoven!

## FABRIC REQUIREMENTS:



15850-12 - Mozart Black

¾ yard

Center square A



15852-12 - Beethoven Black

¾ yard

Center square B



15853-12 - Mahler Black

1¼ yards

Half circle A



15854-14 - Schubert Black

1¼ yards

Center square B



15856-25 - Sage Tonal

2 yards

Accent Background



15857-12 - Dvorak Black

1¾ yards

Background and Binding

Backing 4 yards



moda

PS15850 — SUGGESTED RETAIL \$2.00

[www.modafabrics.com](http://www.modafabrics.com)