



# Jo's Shirtings

by Jo Morton

As a devoted maker of scrap quilts, I can never have enough background prints to play with, especially shirting prints. From tiny starbursts to petite tulips, thin stripes to tossed buds, I know you will love adding these prints to your scrappy projects.

38040 18



38043 18



38042 18



38040 23



38041 22



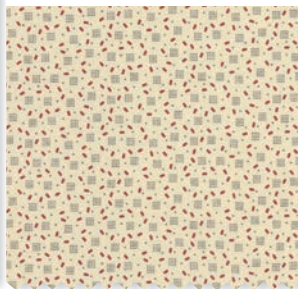
38043 22



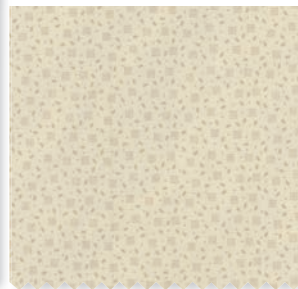
38044 13



38046 22



38046 13



38043 13



38042 23



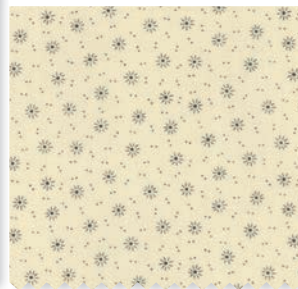
38040 13



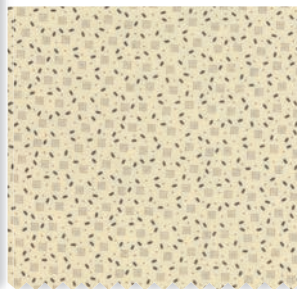
38042 13



38041 12

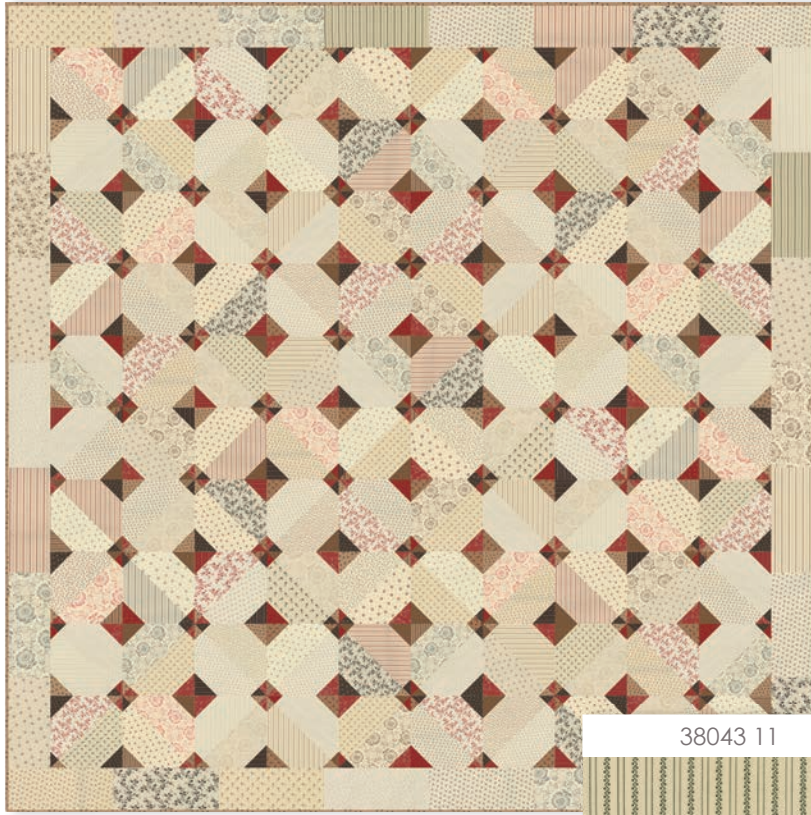


38046 12





**KIT38040**



pattern by Miss Rosie's Quilt Company  
KIT38040  
RQC 145 / RQC 145G  
Old School Size: 67" x 67"

*Enjoy the little things.*

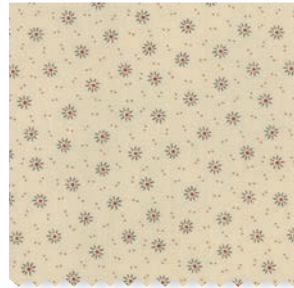
38045 12



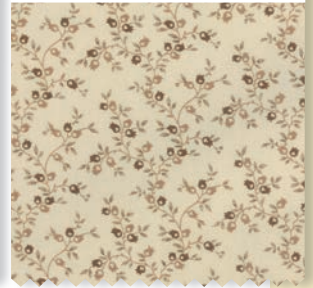
38042 11



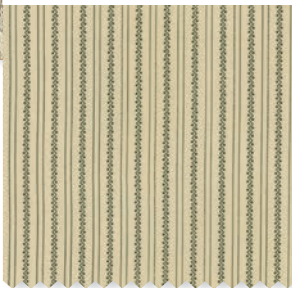
38041 11



38044 11



38043 11



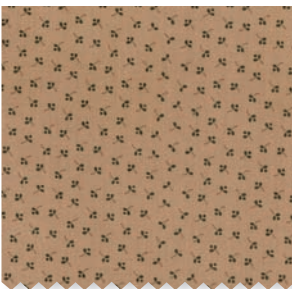
38045 22



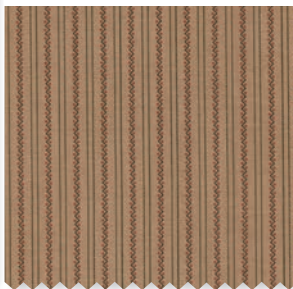
38040 12



38042 14



38043 14



38045 14



38046 19



38043 12



38044 21



38042 17



38043 17



38040 22



38043 21



**38040**

Asst.  
15

Asst.  
8

AB

F8

JR

LC

MC

PP

KIT

• 32 Prints  
JR's, LC's, MC's & PP's include two each of 38042 and 38044 11 & 13.

• 100% Premium Cotton